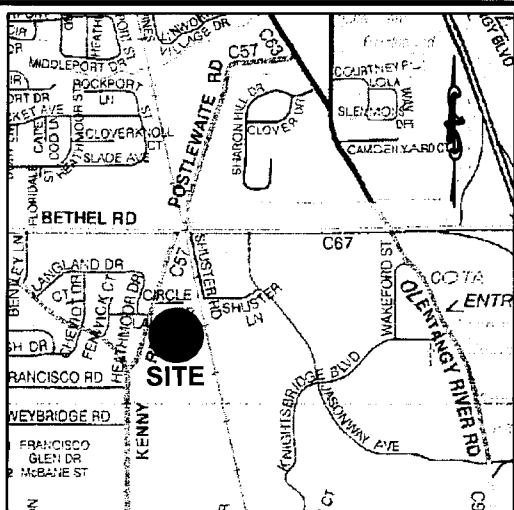


0.036 Acre Parcel
4664 Kenny Road

CITY OF COLUMBUS, FRANKLIN COUNTY, OHIO
QUARTER TOWNSHIP 1, TOWNSHIP 1, RANGE 19
UNITED STATES MILITARY DISTRICT



LOCATION MAP
NO SCALE

The basis of bearings used for this exhibit are based on the NAD83 Ohio State Plane Coordinate System, South Zone (NSRS 2007) which determines the bearing of a portion of the centerline of Kenny Road to be N 20° 51' 18" E.

Iron pins set are 5/8" diameter rebar, 30" long and capped Advanced 7661.

SEE PAGE 2 FOR FCGS REFERENCES

H. B. Sell's Subdivision
P.B. 21, Pg. 8
Lot 1

Plahuta Properties, LLC
I.N. 201210150154669

RPOB

S84°26'34"E
31.10'

5/8" IP



Legend

- Iron Pin Set
- ⊗ PK Nail Set
- Iron Pin Found

Kendall Park Investment
Condominium
C.P.B. 300, Page 93
I.N. 202110260194634

City of Columbus, Ohio
0.235 Ac.
I.N. 201412050161651

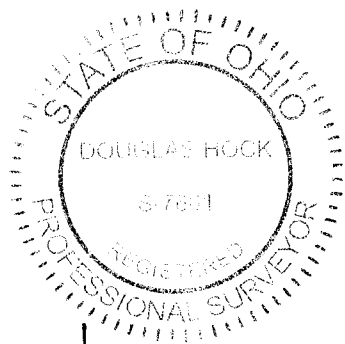
TPOB

31.40'

S86°19'05"E

20.93'

Kenny Road Storage LLC
I.N. 201608220110412
1.995 Ac. (deed)

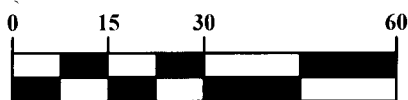


Kenroad LLC
I.N. 200705300093002
0.655 Ac.

[Signature] 3/25/22
Douglas R. Hock, P.S. 7661 Date:

This drawing is based on existing Franklin County records and an actual field survey completed in March 2016.

GRAPHIC SCALE



1 inch = 30 feet

DRAWN BY: DRH	JOB NO.: 21-0194-65
DATE: 3/23/22	CHECKED BY: DRB

ADVANCED
CIVIL DESIGN
ENGINEERS SURVEYORS

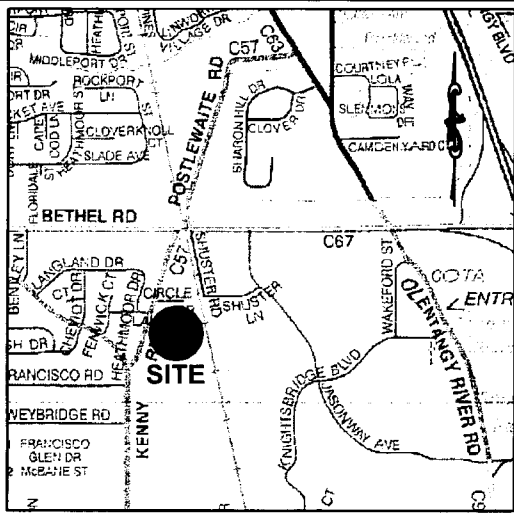
781 Science Boulevard, Suite 100
Gahanna, Ohio 43230
ph 614.428.7750
fax 614.428.7755

0.036 Acre Parcel
4664 Kenny Road

CITY OF COLUMBUS, FRANKLIN COUNTY, OHIO
QUARTER TOWNSHIP 1, TOWNSHIP 1, RANGE 19
UNITED STATES MILITARY DISTRICT

Legend

- Iron Pin Set
- ⊗ PK Nail Set
- Iron Pin Found



LOCATION MAP
NO SCALE

The basis of bearings used for this exhibit are based on the NAD83 Ohio State Plane Coordinate System, South Zone (NSRS 2007) which determines the bearing of a portion of the centerline of Kenny Road to be N 20° 51' 18" E.

Iron pins set are 5/8" diameter rebar, 30" long and capped Advanced 7661.

S2°51'02"W 222.32'

FCGS 1106

FCGS 1105



RECEIVED

APR 14 2022

Franklin County Engineer
Cornell R. Robertson, P.E., P.S.

Kenny Road

Circle Drive
P.B. 21, Pg. 8

H. B. Sell's Subdivision
P.B. 21, Pg. 8
Lot 1

Plahuta Properties, LLC
I.N 201210150154669

S20°51'18"W
794.16'

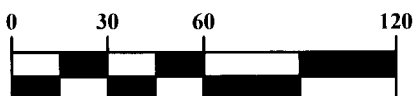
S84°26'34"E
31.10'

RPOB

SEE PAGE 1

DRAWN BY: DRH	JOB NO.: 21-0194-65
DATE: 3/23/22	CHECKED BY: DRB

GRAPHIC SCALE



1 inch = 60 feet



ADVANCED
CIVIL DESIGN

ENGINEERS SURVEYORS

781 Science Boulevard, Suite 100
Gahanna, Ohio 43230
ph 614.428.7750
fax 614.428.7755