

11-3-D



Evans, Mechwart, Hambleton & Tilton, Inc.
Engineers • Surveyors • Planners • Scientists
5500 New Albany Road, Columbus, OH 43054
Phone: 614.775.4500 Toll Free: 888.775.3648

emht.com

SURVEY OF ACREAGE PARCEL

HALF SECTION 8, SECTION 7, TOWNSHIP 16, RANGE 20

REFUGEE LANDS

CITY OF REYNOLDSBURG, COUNTY OF FRANKLIN, STATE OF OHIO

Date:	March 31, 2022
Scale:	1" = 30'
Job No:	2021-0561
Sheet No:	1 of 2

BASIS OF BEARINGS:

The bearings are based on the Ohio State Plane Coordinate System, South Zone, NAD83 (1986 Adjustment). Control for bearings was from coordinates of monuments REYNOLDSBURG and HOWELL2, having a bearing of North 56°30'34" West, as established by the Franklin County Engineering Department using Global Positioning Systems procedures and equipment.

SURVEY NOTE:

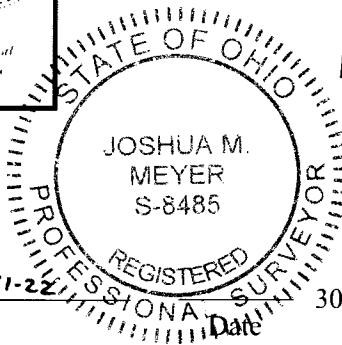
This survey was prepared using documents of record, prior plats of survey, and observed evidence located by an actual field survey January 2022.

PRELIMINARY APPROVAL
Cornell R. Robertson P.E., P.S.

BY: *gantoni*
04/01/2022

PENDING ORIGINALS
Submitted in digital format

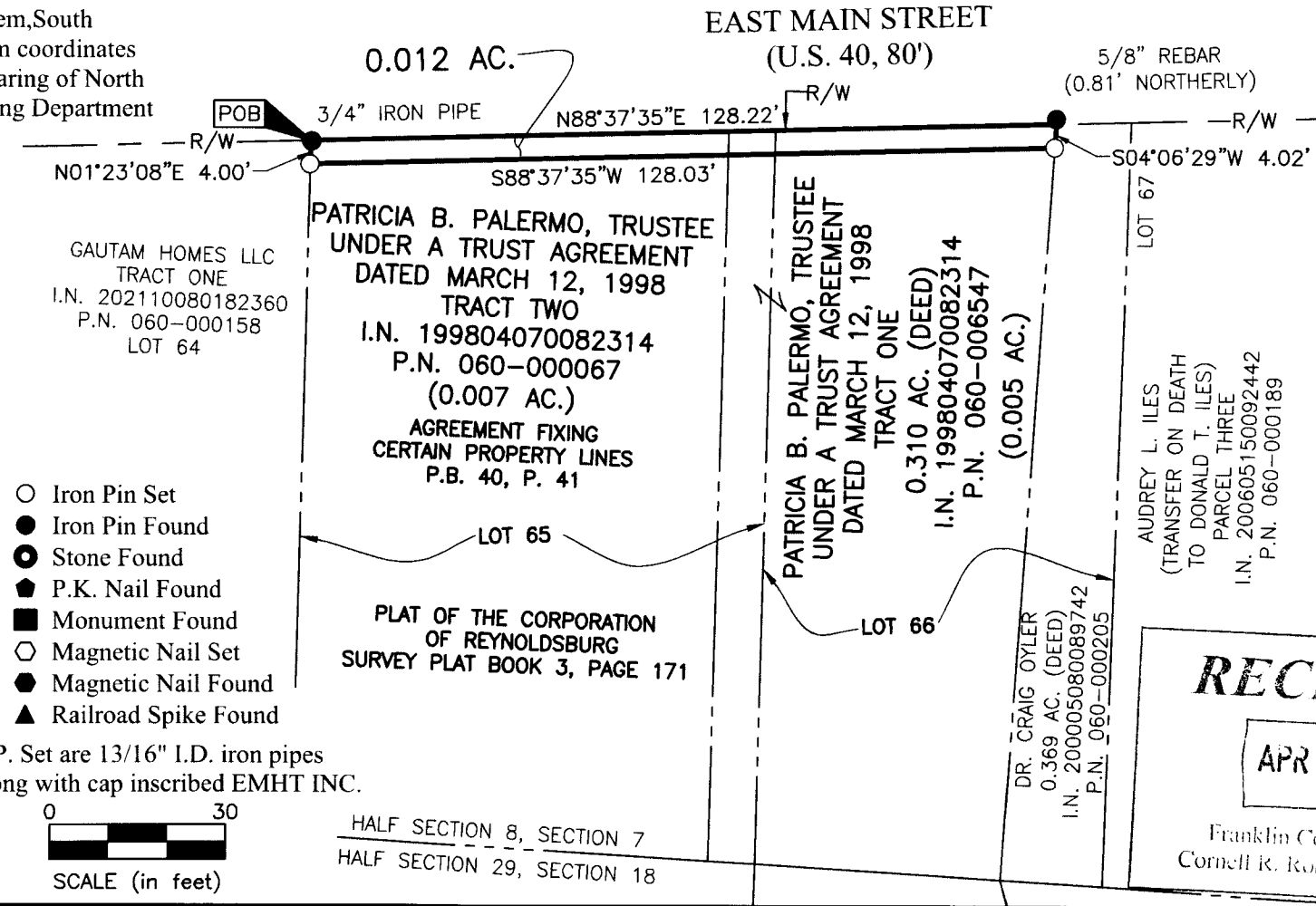
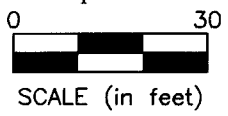
Please return this approval, along with the original description and plat of survey, as prepared by the surveyor, signed, sealed and dated in blue ink



By *Joshua M. Meyer* 3-31-22
Joshua M. Meyer
Professional Surveyor No. 8485
jmeyer@emht.com

- Iron Pin Set
- Iron Pin Found
- Stone Found
- ◆ P.K. Nail Found
- Monument Found
- Magnetic Nail Set
- Magnetic Nail Found
- ▲ Railroad Spike Found

I.P. Set are 13/16" I.D. iron pipes
30" long with cap inscribed EMHT INC.



RECEIVED

APR 1 2022

Franklin County Engineer
Cornell R. Robertson, P.E., P.S.