

LOCATION MAP
NOT TO SCALE

The bearings shown on this plat are based on the Ohio State Plane Coordinate System, South Zone, NAD83 (2011ADJ). Control for bearings was established using a Global Positioning System survey and an NGS OPUS solution, with a bearing of S81°33'31"W for the existing north right-of-way line for West Broad Street and is designated the "Basis of Bearing" for this plat.

PRELIMINARY APPROVAL

Cornell R. Robertson, P.E., P.S.

BY: *jwiggins*
02/15/2022

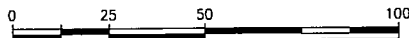


PENDING ORIGINALS

*Submitted via digital format

Please return this approval, along with the original description and plat of survey, as prepared by the surveyor, signed, sealed and dated in blue ink.

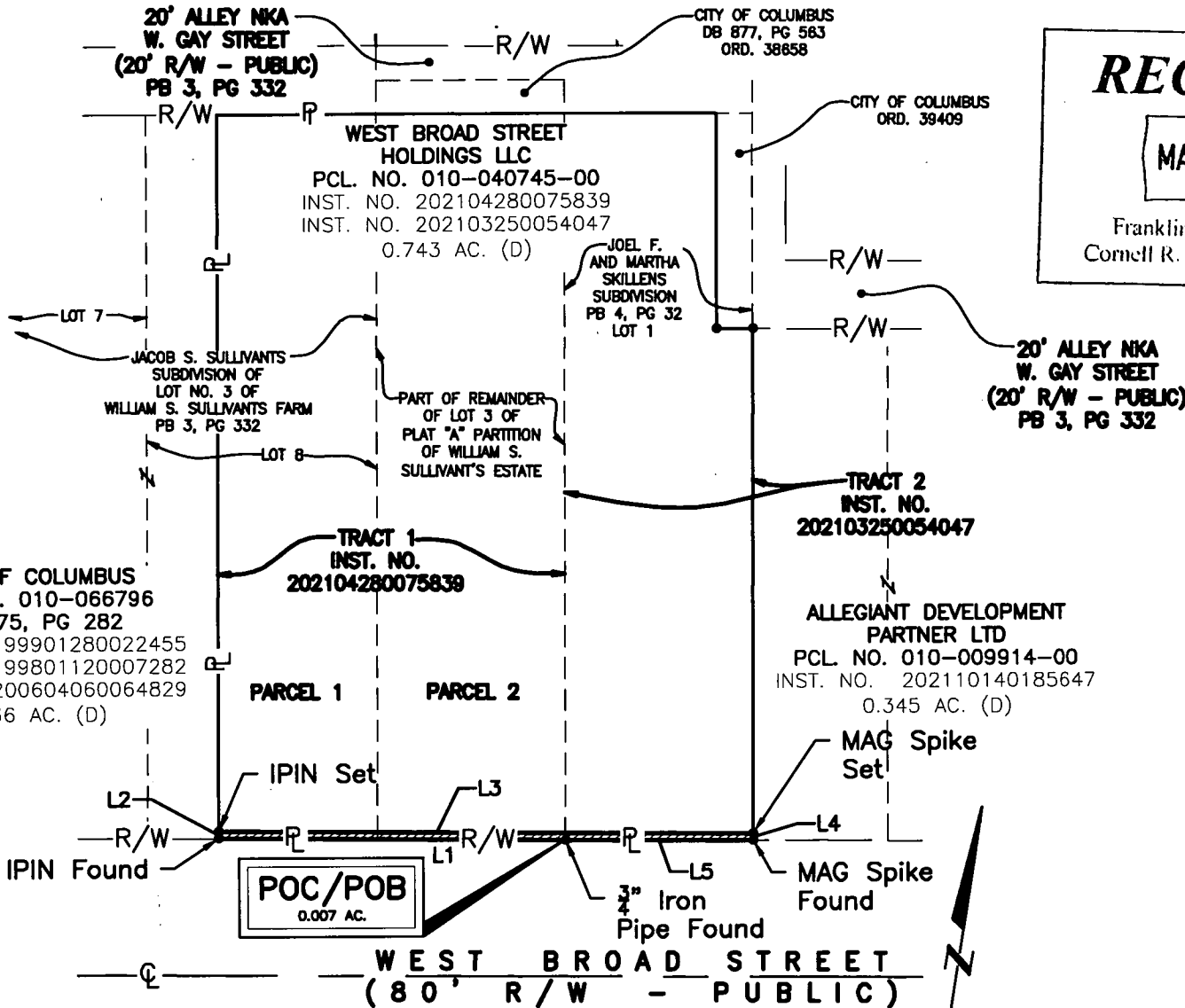
Scale: 1" = 50'



E. P. FERRIS
AND ASSOCIATES
INC.

Consulting Civil Engineers and Surveyors

880 KING AVENUE
COLUMBUS, OHIO 43212
(614) 299-2999
(614) 299-2992 (Fax)
www.EPFERRIS.com



RECEIVED
MAR 07 2022
Franklin County Engineer
Cornell R. Robertson, P.E., P.S.

LINE TABLE		
LINE	LENGTH	BEARING
L1	100.73'	S81°33'31"W
L2	2.00'	N08°42'27"W
L3	155.22'	N81°33'31"E
L4	2.00'	S08°42'02"E
L5	54.49'	S81°33'31"W

Iron Pins Set are 5/8" rebar, 30" in length with a yellow plastic cap with "EP FERRIS SURVEYOR 8342" inscribed on top.

MAG Nails Set are magnetic nails with a 1.5" diameter brass washer with "EP FERRIS SURVEYOR 8342" inscribed on top.

Field Survey was conducted on 2022-02-09.

We hereby certify that the foregoing Boundary Survey was prepared from actual field measurements in accordance with Chapter 4733-37 Ohio Administrative Code.

0.007 AC. R/W DEDICATION

Situated in the State of Ohio, County of Franklin, in the City of Columbus, Virginia Military Survey Number 1393, being a part of Lot Number Eight (8) of Jacob S. Sullivant's Subdivision of Lot Number Three (3) of William S. Sullivant's Farm, recorded in Plat Book 3, page 332, henceforth referred to as "Tract 1, Parcel 1", being a part of the Remainder of Lot Three (3) of Plat "A" annexed to record of partition of Estate of Wm. S. Sullivant in Complete Record 81, page 80 et. seq., henceforth referred to as "Tract 1, Parcel 2" and being a part of Lot One (1) of Joel and Martha Skillen's Subdivision of Five-Sixths (5/6th) of an acre of land, out of the southeast corner of Lot Three (3) of the Subdivision of William Sullivants Farm in Plat Book Vol. 4, Page 32, henceforth referred to as "Tract 2", all records being of the Recorder's Office, Franklin County, Ohio



BY: *Matthew Lee Sloat* 2/15/22
Matthew Lee Sloat, P.E., P.S.
Registered Surveyor No. 8342

DRWN BY JLC CHK BY MLS DATE 2/10/2022