



Evans, Mechwart, Hambleton & Tilton, Inc.  
 Engineers • Surveyors • Planners • Scientists  
 5500 New Albany Road, Columbus, OH 43054  
 Phone: 614.775.4500 Toll Free: 888.775.3648  
 emht.com

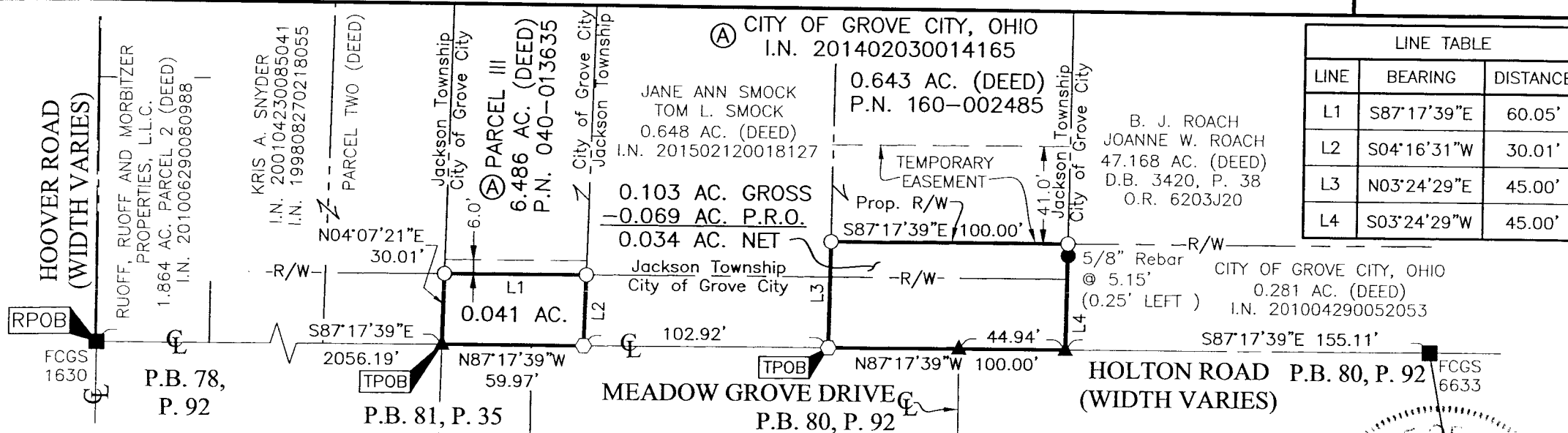
# SURVEY OF ACREAGE PARCEL

VIRGINIA MILITARY DISTRICT SURVEY NUMBER 6840  
 CITY OF GROVE CITY & TOWNSHIP OF JACKSON, COUNTY OF FRANKLIN, STATE OF OHIO

Date: January 25, 2021

Scale: 1" = 60'

Job No: 2019-0227



LINE TABLE		
LINE	BEARING	DISTANCE
L1	S87°17'39"E	60.05'
L2	S04°16'31"W	30.01'
L3	N03°24'29"E	45.00'
L4	S03°24'29"W	45.00'

- = MON. FND.
- = I.P. FND.
- = I.P. SET
- ◊ = MAG. NAIL SET
- ▲ = R.R. SPK. FND.

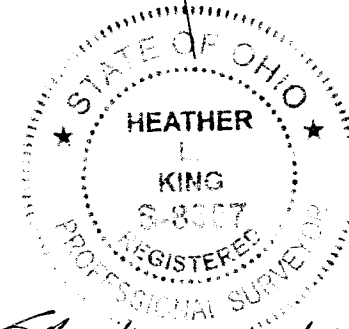
I.P. Set are 13/16" I.D. iron pipes  
 30" long with cap inscribed EMHT INC.



GRAPHIC SCALE (in feet)

**BASIS OF BEARINGS:**  
 The bearings are based on the Ohio State Plane Coordinate System, South Zone, per NAD83 (1986 adjustment). Control for bearings was from coordinates of monuments FCGS 5548 and FCGS 5539, having a bearing of North 00° 21' 40" East for a portion of the centerline of Hoover Road, established by the Franklin County Engineering Department.

**SURVEY NOTE:**  
 This survey was prepared using documents of record, prior plats of survey, and observed evidence located by an actual field survey.



By Heather L. King Date 2/1/21  
 Heather L. King  
 Professional Surveyor No. 8307  
 hking@emht.com

RECEIVED  
 OCT 01 2021  
 Franklin County Engineer  
 Cornell R. Robertson, P.L., P.S.