



Evans, Mechwart, Hambleton & Tilton, Inc.
 Engineers • Surveyors • Planners • Scientists
 5500 New Albany Road, Columbus, OH 43054
 Phone: 614.775.4500 Toll Free: 888.775.3648

emht.com

SURVEY OF ACREAGE PARCEL

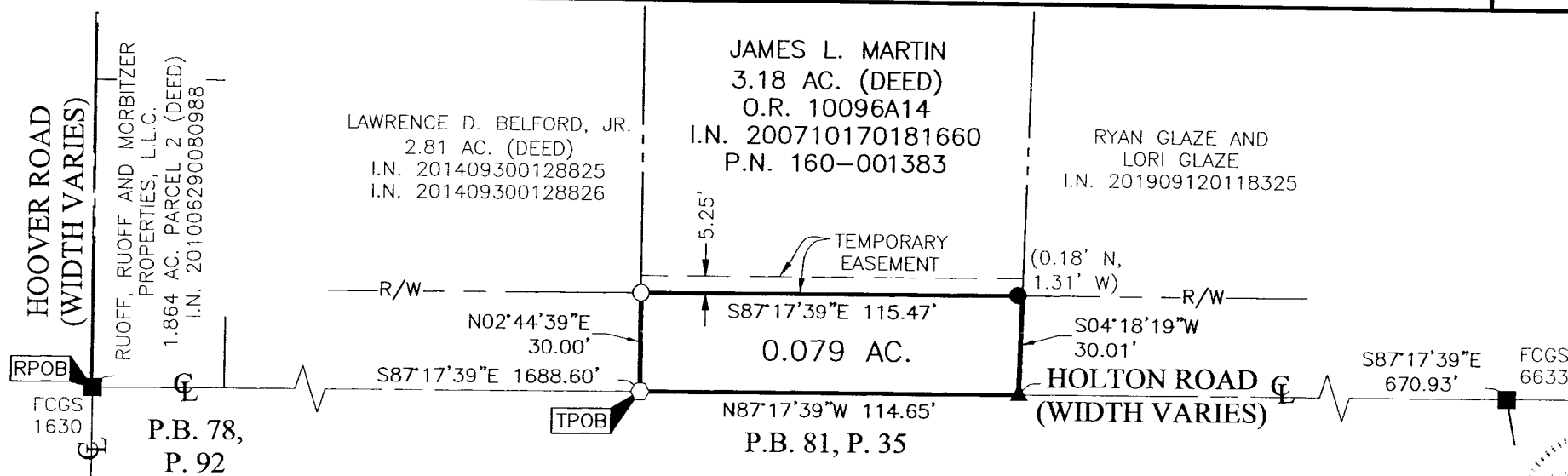
VIRGINIA MILITARY DISTRICT SURVEY NUMBER 6840

TOWNSHIP OF JACKSON, COUNTY OF FRANKLIN, STATE OF OHIO

Date: January 25, 2021

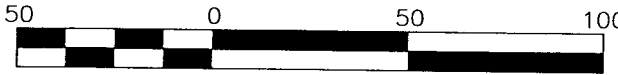
Scale: 1" = 50'

Job No: 2019-0227



- = MON. FND.
- = 5/8" Rebar Capped "ACKINSON" FND.
- = I.P. SET
- = MAG. NAIL SET
- ▲ = R.R. SPK. FND.

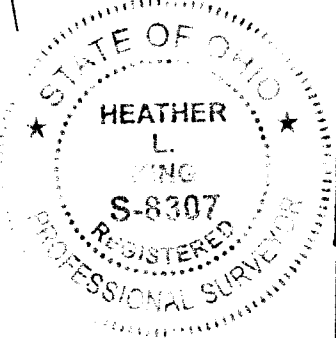
I.P. Set are 13/16" I.D. iron pipes 30" long with cap inscribed EMHT INC.



GRAPHIC SCALE (in feet)

BASIS OF BEARINGS:
 The bearings are based on the Ohio State Plane Coordinate System, South Zone, per NAD83 (1986 adjustment). Control for bearings was from coordinates of monuments FCGS 5548 and FCGS 5539, having a bearing of North 00° 21' 40" East for a portion of the centerline of Hoover Road, established by the Franklin County Engineering Department.

SURVEY NOTE:
 This survey was prepared using documents of record, prior plats of survey, and observed evidence located by an actual field survey.



By Heather L. King Date 2/1/21
 Heather L. King
 Professional Surveyor No. 8307
 hking@emht.com

J:\20190227\DWG\04SHEETS\BOUNDARY\20190227-VS-BNDY-13-A.DWG plotted by KING, HEATHER on 1/31/2021 3:23:51 PM last saved by HKING on 1/31/2021 3:07:52 PM
 Xrefs:

Franklin County Engineer
 Cornell R. Kobertson, P.E., P.S.

OCT 01 2021

RECEIVED