



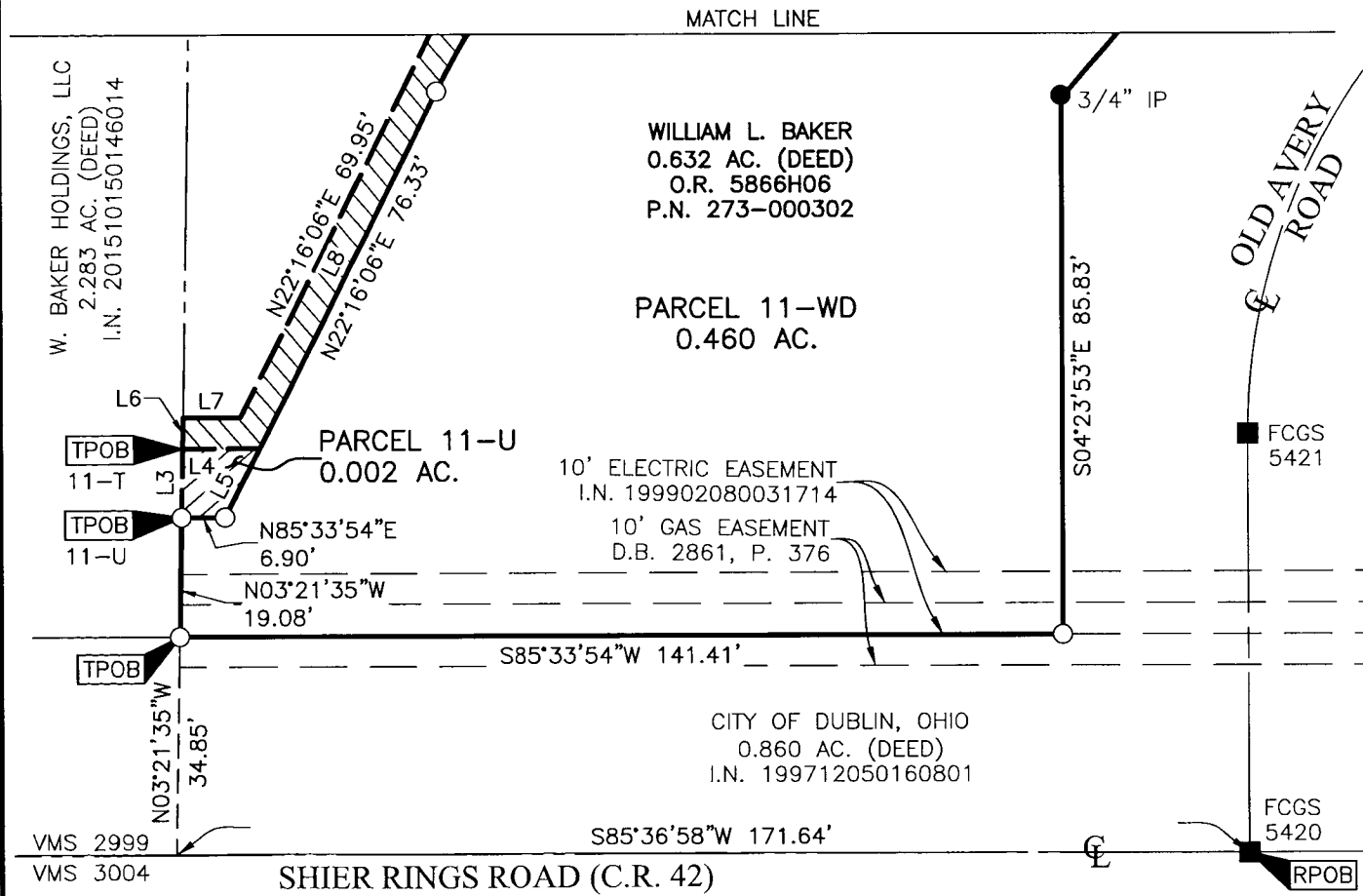
Evans, Mechwart, Hambleton & Tilton, Inc.
 Engineers - Surveyors - Planners - Scientists
 5500 New Albany Road, Columbus, OH 43054
 Phone: 614.775.4500 Toll Free: 888.775.3648
 emht.com

SURVEY OF ACREAGE PARCEL

VIRGINIA MILITARY DISTRICT SURVEY NUMBER 2999
 CITY OF DUBLIN, COUNTY OF FRANKLIN, STATE OF OHIO

Date:	May 29, 2020
Scale:	1" = 30'
Job No:	2019-0835

SHEET 1 OF 2



BASIS OF BEARINGS:

The Bearings shown hereon are based on the Ohio State Plane Coordinate System South Zone as per NAD83 (1986 Adjustment). Control for bearings was from coordinates of monuments FCGS 5536 and FCGS 7752, established by the Franklin County Engineering Department, using Global Positioning System procedures and equipment, and having a bearing of North 85° 37' 06" East for a portion of the centerline of Shier Rings Road.

SURVEY NOTE:

This survey was prepared using documents of record, prior plats of survey, and observed evidence located by an actual field survey.

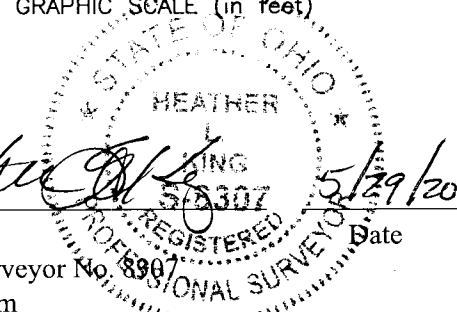
- = MON. FND.
- = I.P. FND.
- = I.P. SET

I.P. Set are 13/16" I.D. iron pipes 30" long with cap inscribed EMHT INC.



GRAPHIC SCALE (in feet)

By *Heather L. King*
 Heather L. King
 Professional Surveyor No. 8907
 hking@emht.com
 Date 5/29/20



Franklin County Engineer
 Cornell P. Robertson, P.E., P.S.

OCT 01 2021

RECEIVED



Evans, Mechwart, Hambleton & Tilton, Inc.
 Engineers • Surveyors • Planners • Scientists
 5500 New Albany Road, Columbus, OH 43054
 Phone: 614.775.4500 Toll Free: 888.775.3648
 emht.com

SURVEY OF ACREAGE PARCEL

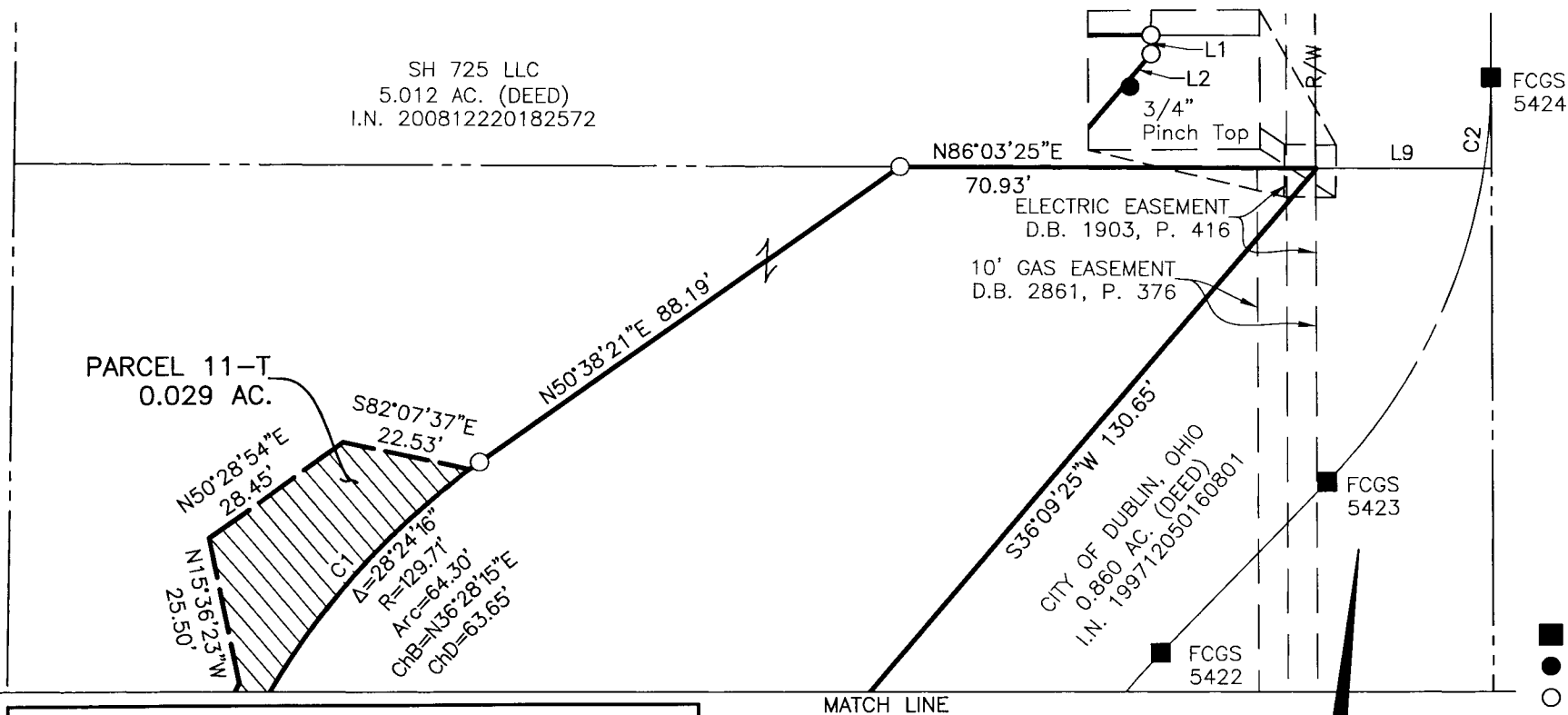
VIRGINIA MILITARY DISTRICT SURVEY NUMBER 2999
 CITY OF DUBLIN, COUNTY OF FRANKLIN, STATE OF OHIO

Date: May 29, 2020

Scale: 1" = 30'

Job No: 2019-0835

SHEET 2 OF 2



LINE TABLE		
LINE	BEARING	DISTANCE
L1	S04°14'35"E	0.22'
L2	S36°09'25"W	0.44'
L3	N03°21'35"W	11.00'
L4	N85°33'54"E	12.23'
L5	S22°16'06"W	12.31'
L6	N03°21'35"W	5.00'
L7	N85°33'54"E	9.05'
L8	S22°16'06"W	64.01'
L9	N86°03'25"E	28.75'

CURVE TABLE					
CURVE	DELTA	RADIUS	ARC	CH. BEARING	CH. DIST.
C1	27°27'43"	129.71'	62.17'	S35°59'58"W	61.58'
C2	9°00'20"	100.00'	15.72'	N00°19'10"E	15.70'

- = MON. FND.
- = I.P. FND.
- = I.P. SET

I.P. Set are 13/16" I.D. iron pipes 30" long with cap inscribed EMHT INC.



GRAPHIC SCALE (in feet)

Franklin County Engineer
 Heather King, P.E.

OCT 01 2021

RECEIVED