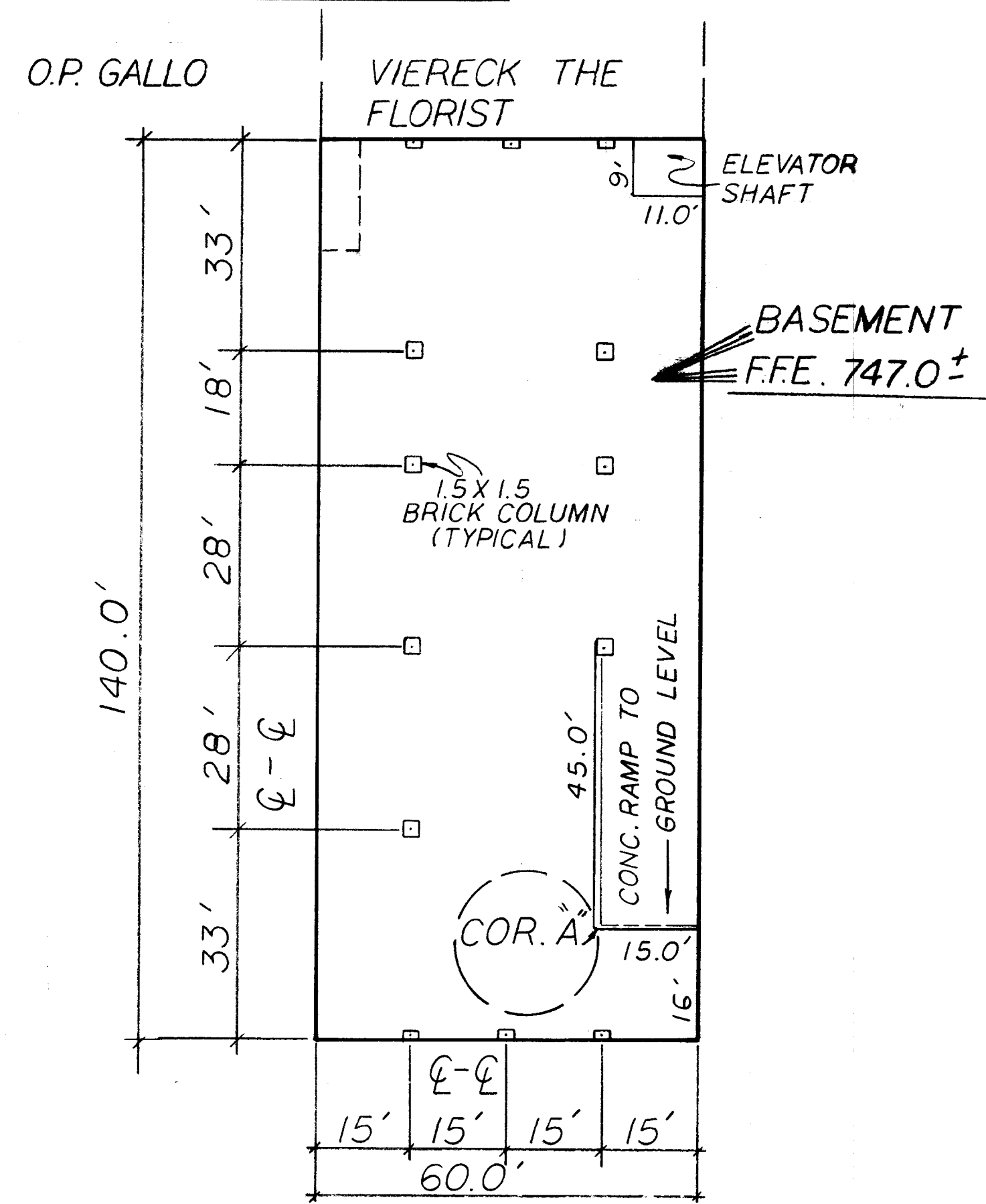
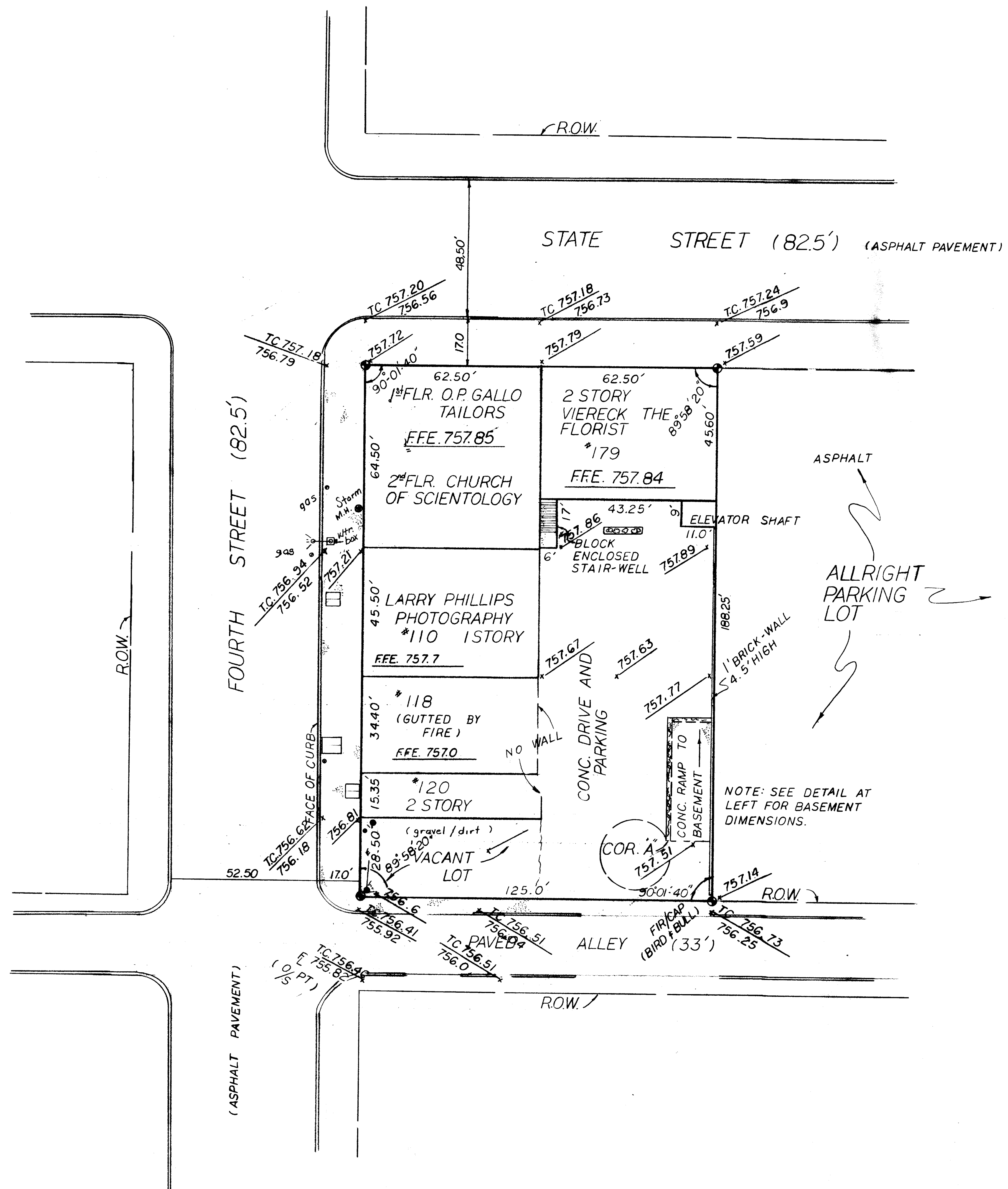


DETAIL OF BASEMENT

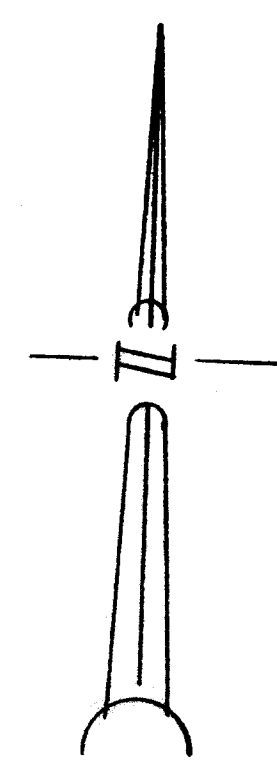


TBM: NGS Q308 1967
 B.R. SET ON TOP S.W. COR CONC.
 WALL OF A VENTILATOR SHAFT
 28' LONG x 11' WIDE x 27' DEEP
 BETWEEN STATE ST & BROAD ST.
 39.8' NW OF S.W. COR (MAIN)
 STATE CAPITOL BUILDING (2.5' ABOVE GROUND)
 EL: 773.509



ASPHALT
 ALLRIGHT
 PARKING
 LOT

NOTE: SEE DETAIL AT
 LEFT FOR BASEMENT
 DIMENSIONS.



PLAT SHOWING BOUNDARY AND AS-BUILT SURVEY
 OF LOTS 30, 31, AND ADJOINING PREMISES, AS SHOWN
 IN OFFICIAL RECORD 10182JOB RECORDER'S OFFICE,
 FRANKLIN COUNTY, OHIO

SCALE: 1"=20' AUGUST 15, 1988

Harry L. Greene
 HARRY L. GREENE REG. SURVEYOR NO. 4058