

### GENERAL NOTES

The Standard City of Columbus, Construction and Material Specifications, 1976 Edition and/or as modified by the City of Upper Arlington Specifications shall govern all construction items that are part of this plan, unless otherwise noted.

The Contractor and Subcontractors shall comply with the Occupational Safety and Health Act of 1970.

The Contractor shall investigate and locate all utilities prior to construction.

All Easements shown on this plan are **platted**

All elevations are based on the City of Upper Arlington Datum. (Add 6.19 to obtain U. S. G. S. Datum)

Where waterlines, storm sewers, and/or sanitary sewers are located in dedicated rights-of-way the backfill shall be compacted granular material.

All manhole rim elevations shown are tentative and shall be adjusted when the grading for the area has been established.

All water line materials and installations shall be in accordance with the current rules and regulations of the City of Columbus Division of Water.

At all points of crossing water lines or sewers the backfill shall be of granular material between the deeper and the shallower pipe as directed by the City of Upper Arlington.

In all conflicts in grade between water lines and storm sewers the water lines shall be lowered during construction.

Water lines shall be laid with a minimum of 4'-6" from top of finished grade (curb) to centerline of water line.

All water lines shall be disinfected in accordance with Item 801.12. Special attention is directed to applicable sections of A.W.W.A. C-601, particularly for flushing (Section 5) and for chlorinating valves and fire hydrants (Section 7).

On dead end water mains in cul-de-sacs, two 3/4" taps shall be installed within one foot of end of main and a third 3/4" tap shall be installed within two feet of end of main.

All fire hydrants shall be located 30" back of curb.

All sanitary sewer pipe shall be extra strength clay pipe, C-700 with Type I bedding.

Lateral sanitary sewers shall be subjected to and pass the infiltration test or exfiltration test, whichever is applicable, before any connection may be connected thereto. Ground water infiltration through the pipe joints shall not exceed 200 gallons per inch of tributary pipe diameter per 24 hours per mile of length or the computed equivalent for shorter lengths and shorter periods of time.

Roof drains, foundation drains and other clean water connections to the sanitary sewer system are prohibited on this project.

The Contractor shall furnish and place as directed approved wye poles made of 2" x 2" lumber at all sanitary sewer wye branches.

All storm sewer pipe shall be reinforced concrete pipe in accordance with A. S. T. M. C-76, with Type I bedding.

#### BENCH MARKS

WEST BOLT OF FIRE HYDRANT - FIRST EAST OF REED ROAD ON NORTH SIDE OF McCOY ROAD.

ELEVATION = 874.95

WEST BOLT OF FIRE HYDRANT - FIRST EAST OF REED ROAD ON NORTH SIDE OF ARDWICK ROAD.

ELEVATION = 878.60

CITY OF UPPER ARLINGTON - REFERENCE DRAWINGS

Standard Curb Inlet Type A

Standard Manhole - Type C

Precast Manhole Base Type C for Sewer Pipe 8" to 27" Diameter

Standard Hydrant Type B

Waterline Construction Details

Concrete Valve Supports

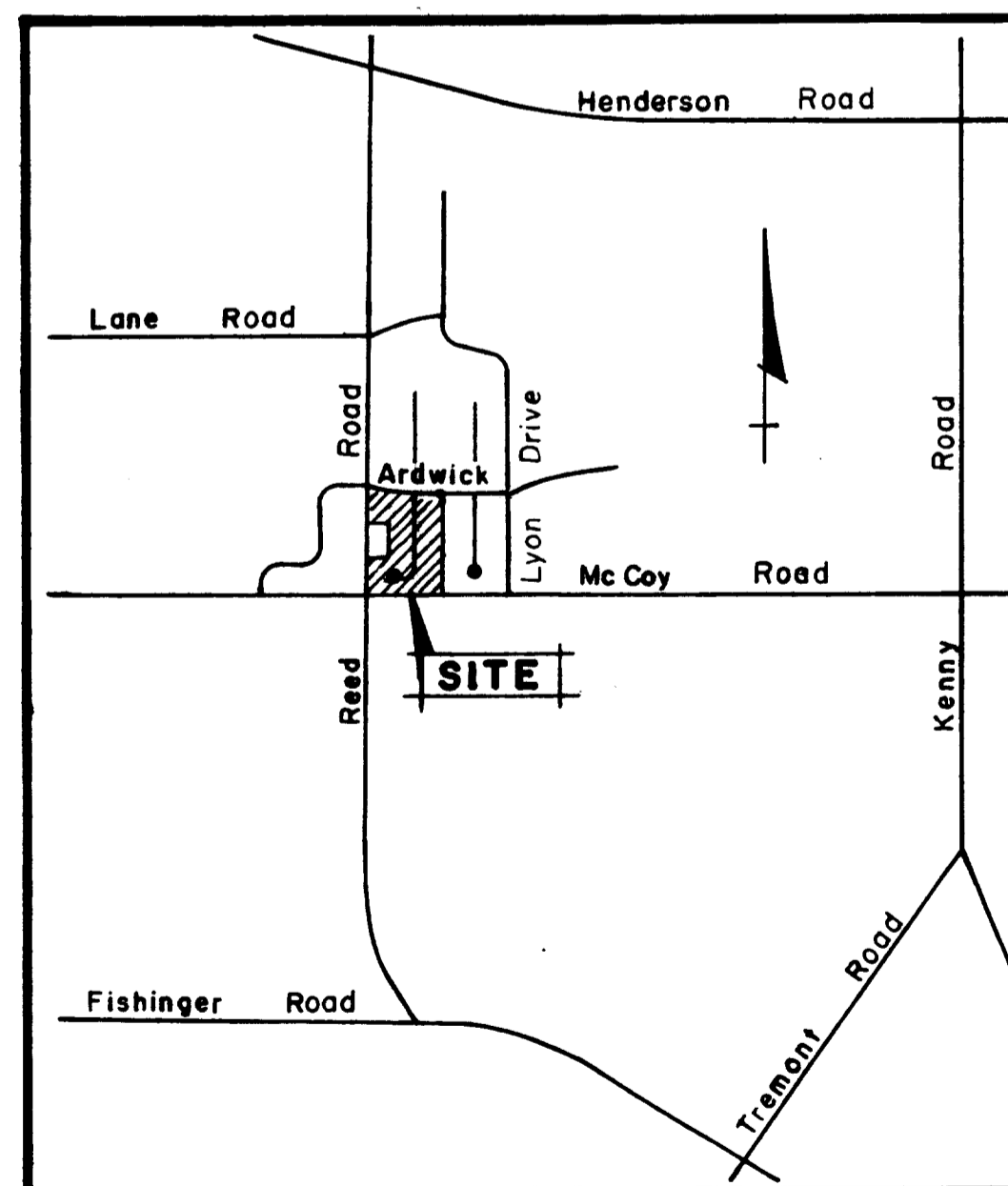
Thrust Block Details

# STREET IMPROVEMENT PLAN AND SANITARY SEWER PLAN FOR

# REEDCREST ADDITION

## UPPER ARLINGTON, OHIO

SEPTEMBER, 1976



### INDEX MAP

No Scale

These "Record Drawings" are based on information furnished by the City of Upper Arlington. The engineer cannot be held responsible for the accuracy of the information.

Approved by Hal W. Skyring Date 10-20-76  
City Manager  
City of Upper Arlington

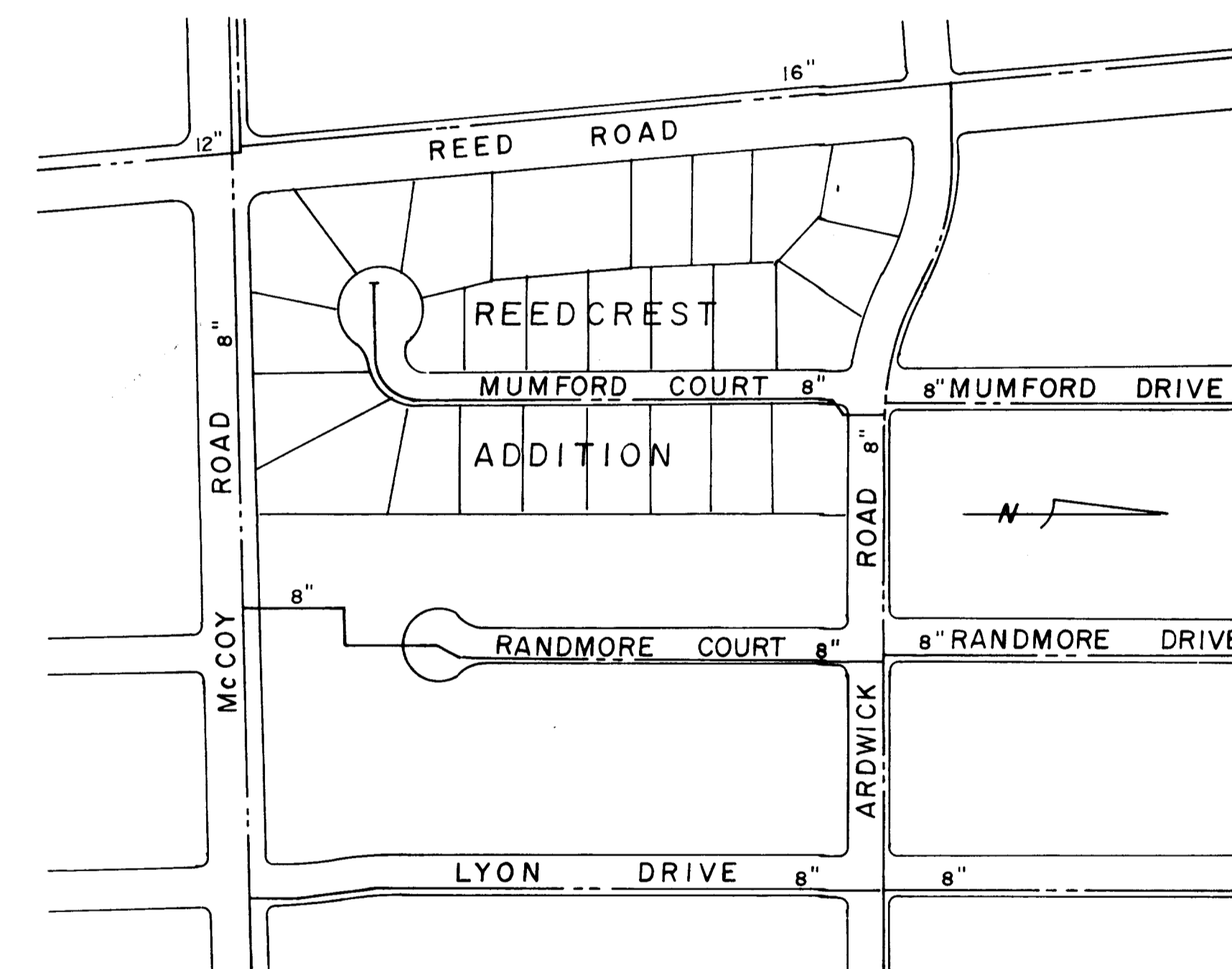
Approved by Dale C. Hoffman Date 10-19-76  
City Engineer  
City of Upper Arlington

Approved by B. D. Robinson Date 10/7/76  
Superintendent - Division of Sewerage & Drainage  
City of Columbus

NOTE: APPROVAL ON THE PART OF THE CITY OF COLUMBUS IS GIVEN PURSUANT TO THE PROVISIONS OF THE SEWER SERVICE AGREEMENT EXECUTED WITH THE CITY OF UPPER ARLINGTON, DATED AUGUST 25, 1960.

Approved by Robert C. Parkinson Date 10-19-76  
Director of Public Service  
City of Columbus

Approved by Jack D. Holt Date 10/15/76  
Superintendent - Division of Water  
City of Columbus



### 200 SCALE WATERLINE INDEX MAP

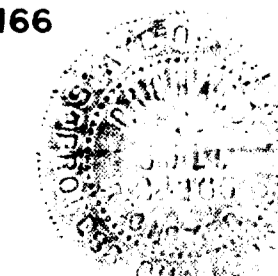
#### ENGINEER

C. F. BIRD & R. J. BULL, LIMITED  
CONSULTING ENGINEERS  
6113 LINWORTH ROAD  
WORTHINGTON, OHIO 43085  
614-885-4026

#### DEVELOPER

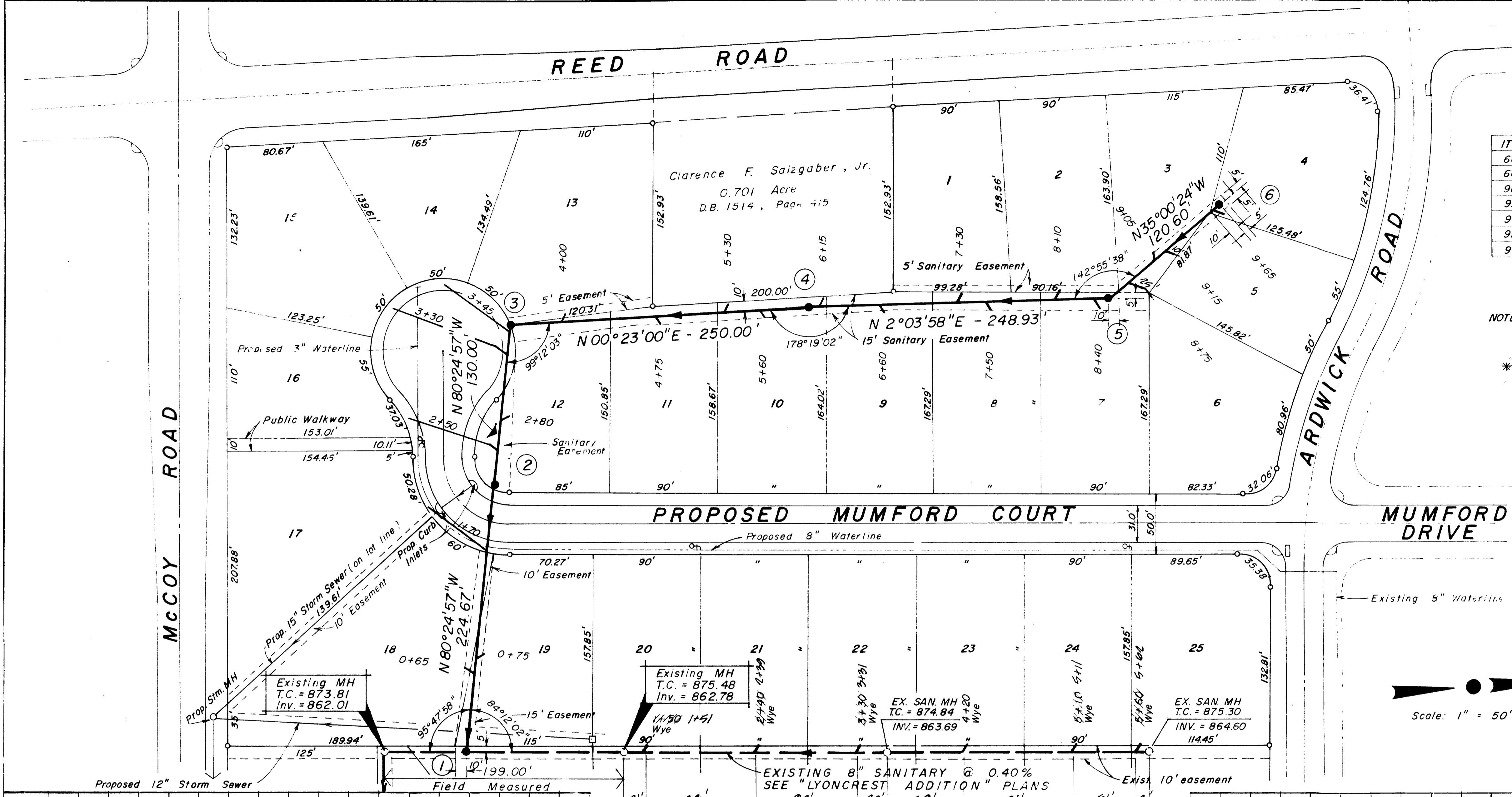
HARLEY E. ROUDA  
1093 FISHINGER ROAD  
COLUMBUS, OHIO 43221  
614-459-0444

by Richard J. Bull  
RICHARD J. BULL,  
OHIO ENGINEER NO. 24166



PLAN SURVEYED PLOTTED ALIGNMENT CHECKED RT. OF WAY CHECKED  
NOTE BOOK NO. DATE BY

PROFILE SURVEYED PLOTTED GRADES CHECKED STRUCTURE NOTATIONS CHKD.  
NOTE BOOK NO. DATE BY



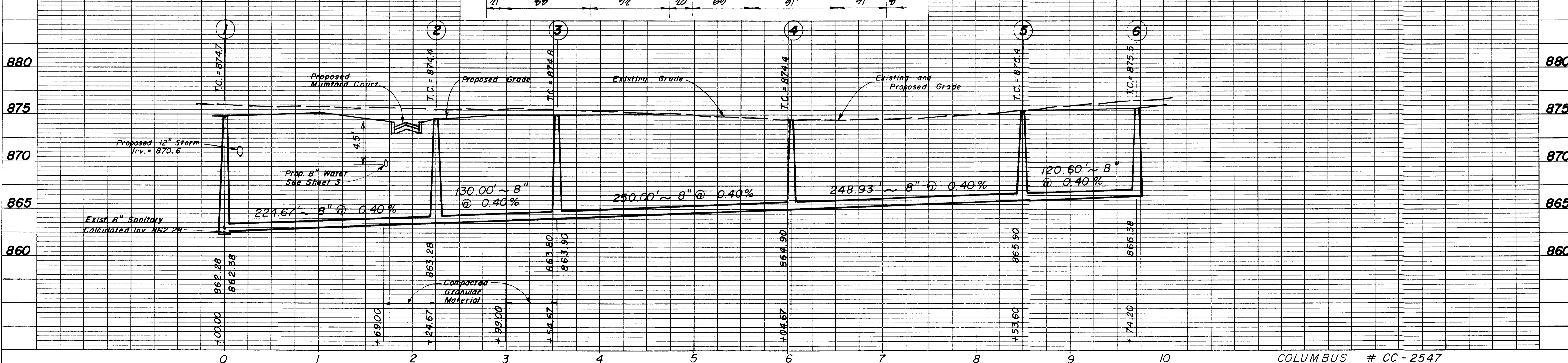
ESTIMATED QUANTITIES

ITEM	TOTAL	UNIT	DESCRIPTION
604	5	Each	Standard Manhole - Type "C"
604	1	Each	Standard Manhole built over exist. 8" sanitary -Type "C"
901	975	Lin. Ft.	8" Sanitary Sewer, C-700, Type I Bedding
912	20	Cu. Yds.	Compacted Granular Material
915	21	Each	8" x 6" Wye Branch
915	6	Each	6" Wye (by others - see note below)
918	315	Lin. Ft.	6" Sanitary House Connection Service

NOTE: Quantities shown are approximate only and are for the Owner's use and information. The Engineer will not be responsible for the exactness thereof.

\* NOTE: WYES FOR LOTS 20 THRU 25 SHALL BE CONSTRUCTED AT THE TIME OF HOUSE SERVICE CONSTRUCTION.

WYES FOR LOTS 20 THRU 25 WERE BUILT UNDER THIS PLAN AS SHOWN BELOW.



ESTIMATED QUANTITIES

ITEM	TOTAL	UNIT	DESCRIPTION
202	70	Lin. Ft.	Curb and Gutter removed and disposed of
203	1800	Cu. Yds.	Excavation (street only)
203	300	Cu. Yds.	Embankment (street only)
301	1166	Ton	Bituminous Aggregate Base
402	224	Ton	Asphalt Concrete
404	224	Ton	Asphalt Concrete
604	1	Each	Storm Manhole
604	1	Each	Tap Existing Storm Manhole with 18" Storm
604	4	Each	Standard Curb Inlet - Type "A"
604	1	Each	Standard Catch Basin - AASO
605	1850	Lin. Ft.	4" Shallow Pipe Underdrain
609	1850	Lin. Ft.	Combination Curb and Gutter
901	351	Lin. Ft.	12" Reinf. Conc. Storm Pipe 706.02, Cl. V with Type I Bedding
901	175	Lin. Ft.	18" Reinf. Conc. Storm Pipe 706.02, Cl. III with Type I Bedding
901	260	Lin. Ft.	15" Reinf. Conc. Storm Pipe 706.02, Cl. III with Type I Bedding
801	123	Lin. Ft.	3" Ductile Iron AWWA Cl. 3 Water Pipe
801	837	Lin. Ft.	8" Ductile Iron AWWA Cl. 3 Water Pipe
803	1	Each	8" x 8" Tapping Sleeve and Valve w/ Col's Std Heavy Duty Box
805	10	Each	3/4" Long-Water Tap (complete)
805	10	Each	3/4" Short-Water Tap (complete)
805	5	Each	3/4" Long-Water Tap (complete) jacked under exist. street
809	3	Each	Fire Hydrant including 6" Gate Valve (complete)

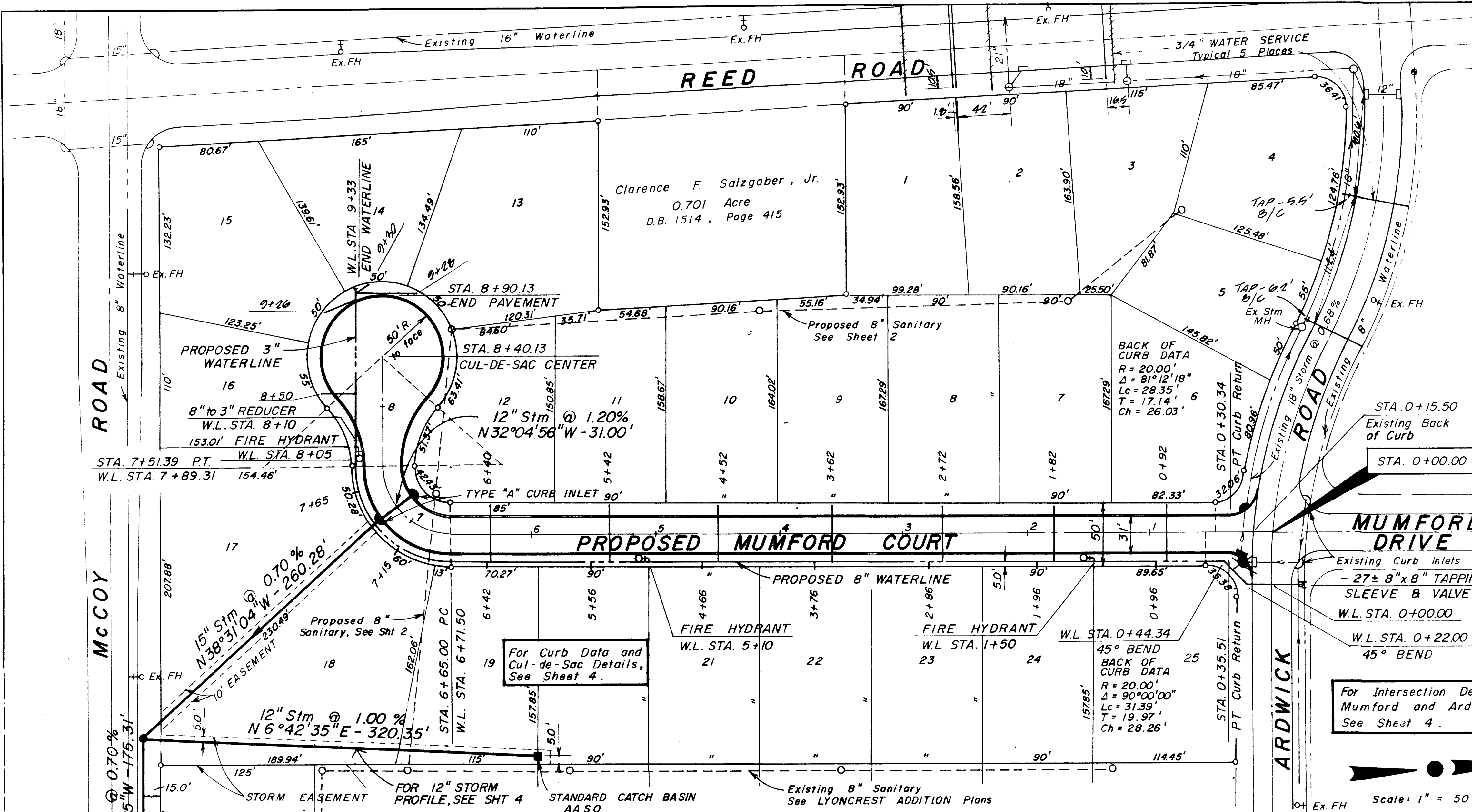
NOTE: Quantities shown are approximate only and are for the Owner's use and information. The Engineer will not be responsible for the exactness thereof.

"W" - LOCATED ON FACE OF NEW CURB FOR WATER VALVE BOXES.

NOTE: 3/4" WATER TAP TO LOTS 1, 2 AND 3 SHALL BE MADE BY TAPPING EXISTING 16" WATERLINE ON THE WEST SIDE OF REED ROAD.  
3/4" WATER TAP TO LOTS 4 AND 5 SHALL BE MADE BY TAPPING EXISTING 8" WATERLINE ON THE NORTH SIDE OF ARDWICK RD.

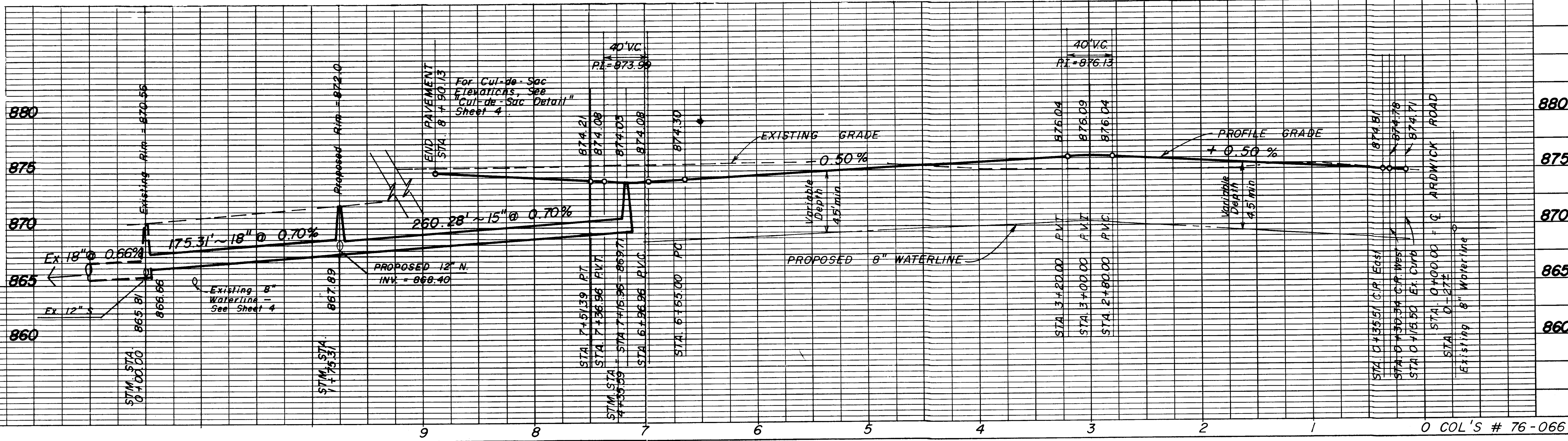
For Intersection Details at Mumford and Ardwick, See Sheet 4.

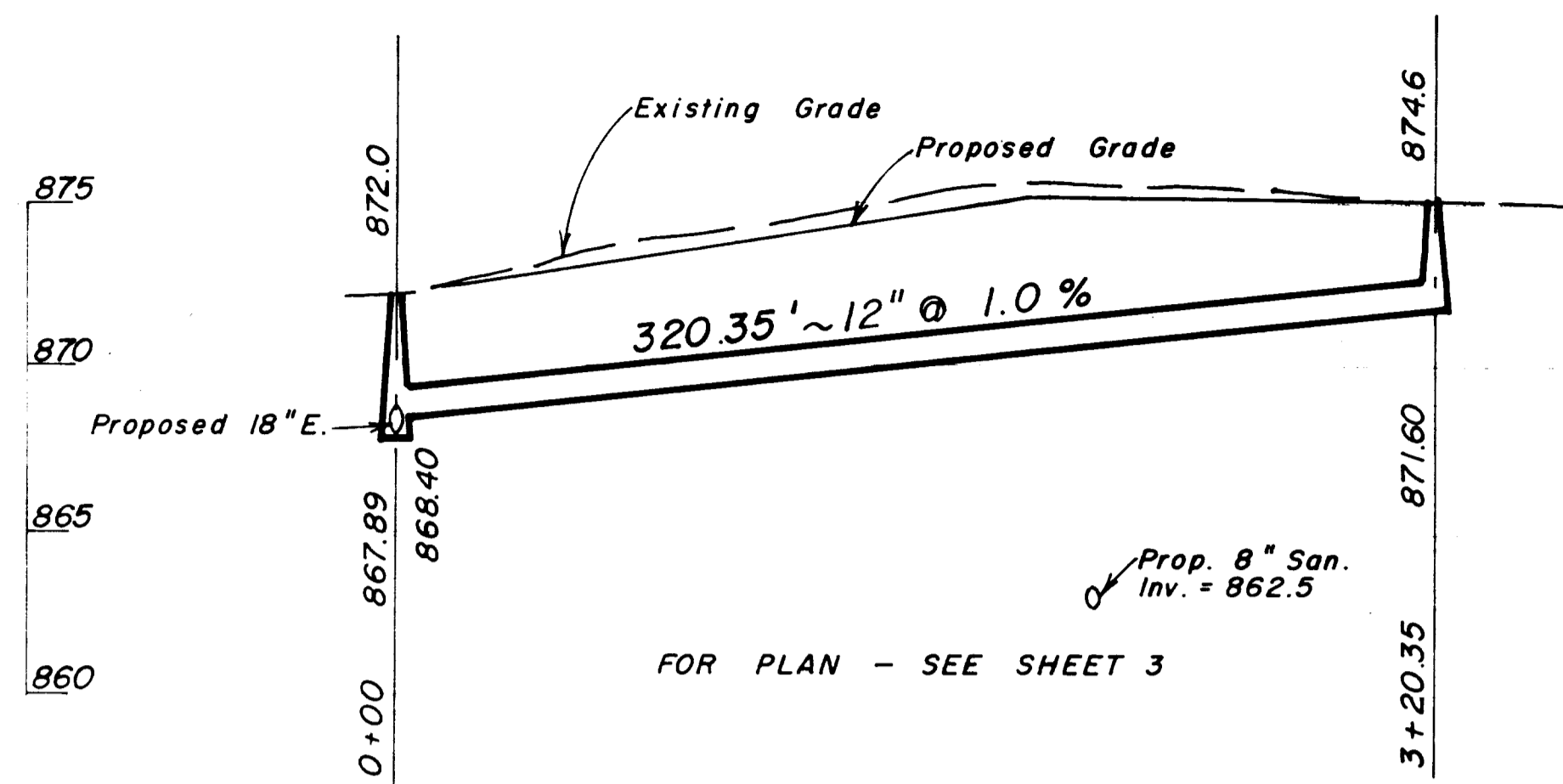
Scale: 1" = 50'



PLAN  
SURVEYED  
PLOTTED  
ALIGNED CHECKED  
NOTE BOOK  
NO. OF WAY CHECKED  
NO.

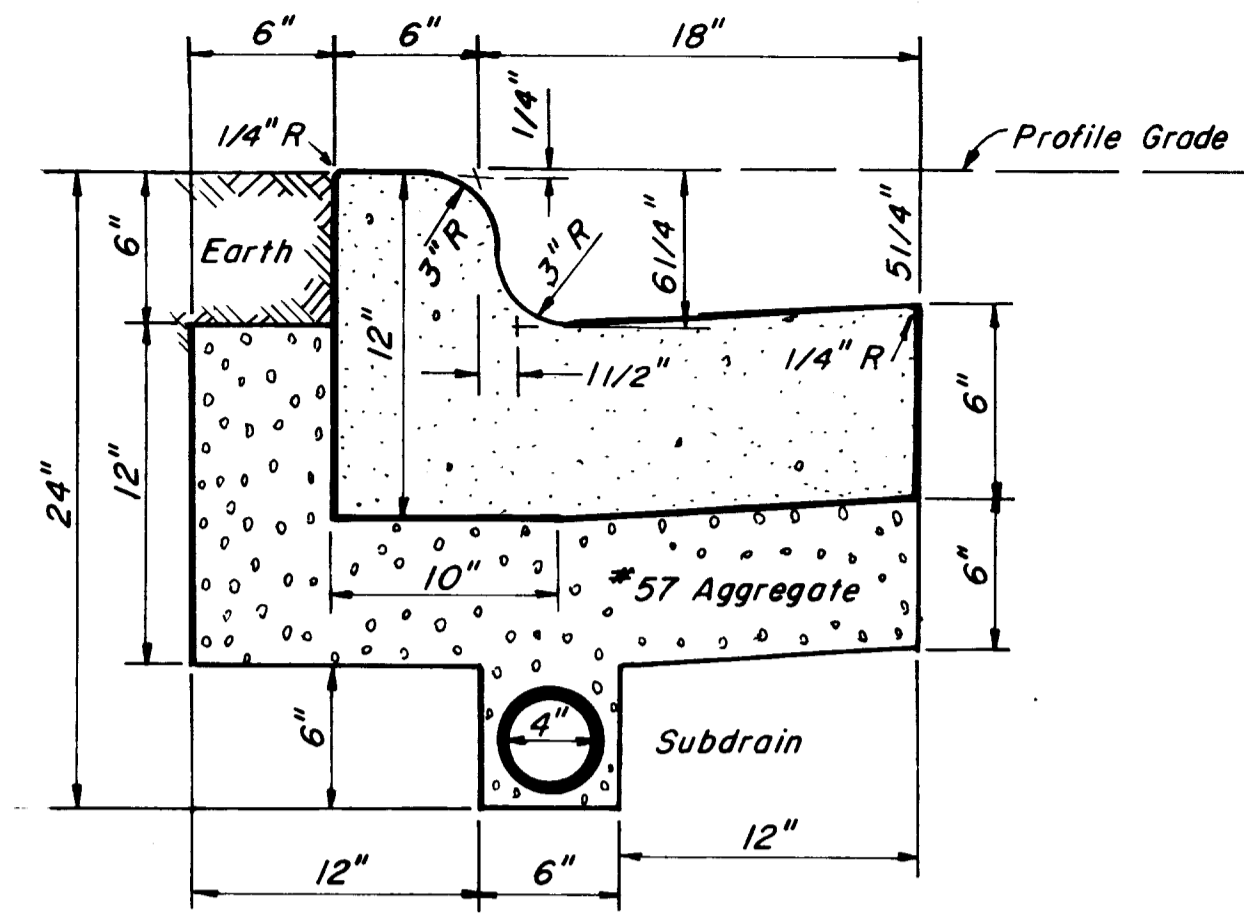
PROFILE  
SURVEYED  
PLOTTED  
GRADES CHECKED  
NOTE BOOK  
NO. 3 NOTED  
STRUCTURE NOTATIONS CHECKED  
NO.





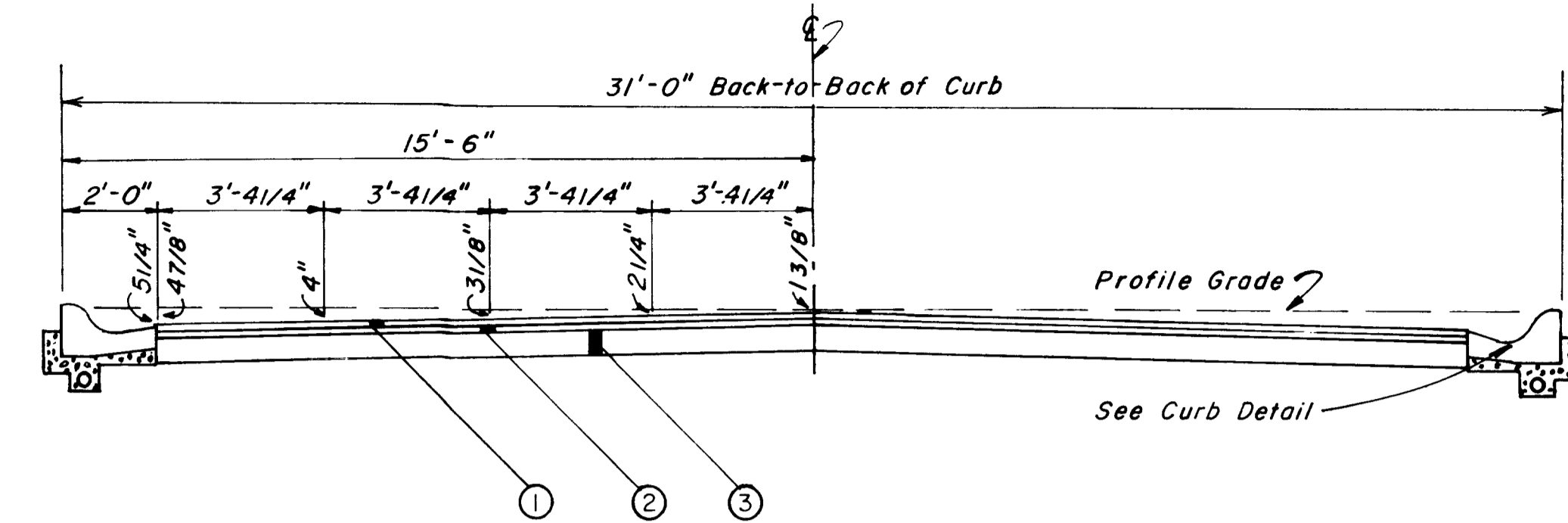
**12" STORM PROFILE**

SCALE: 1" = 50' HORIZ.  
1" = 5' VERT.



**STANDARD COMBINED CURB AND GUTTER DETAIL**

NO SCALE

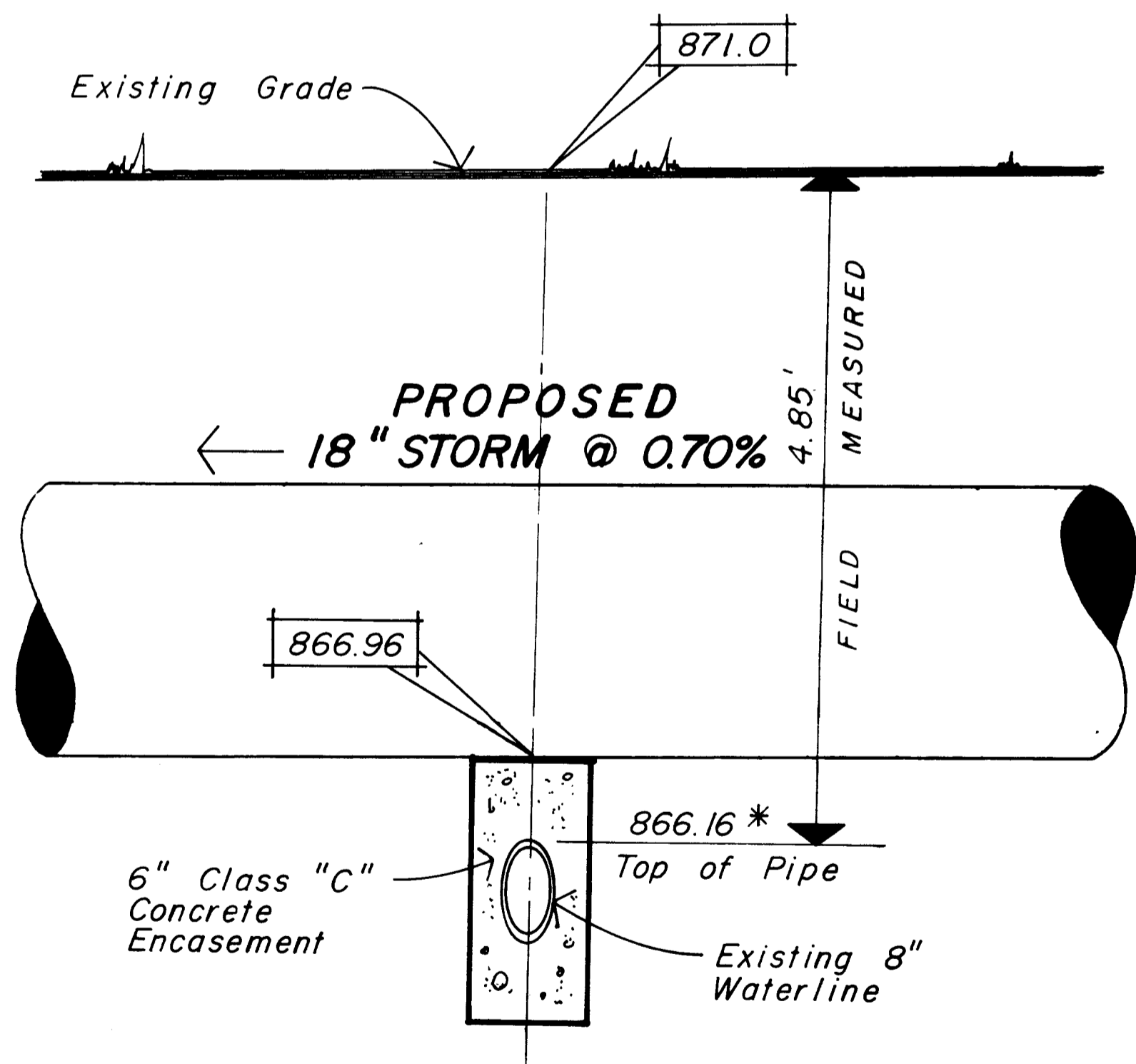


- ① 1 1/4" 404 Asphalt Concrete
- ② 1 1/4" 402 Asphalt Concrete
- ③ 6 1/2" 301 Bituminous Aggregate Base

**TYPICAL PAVING SECTION**

NO SCALE

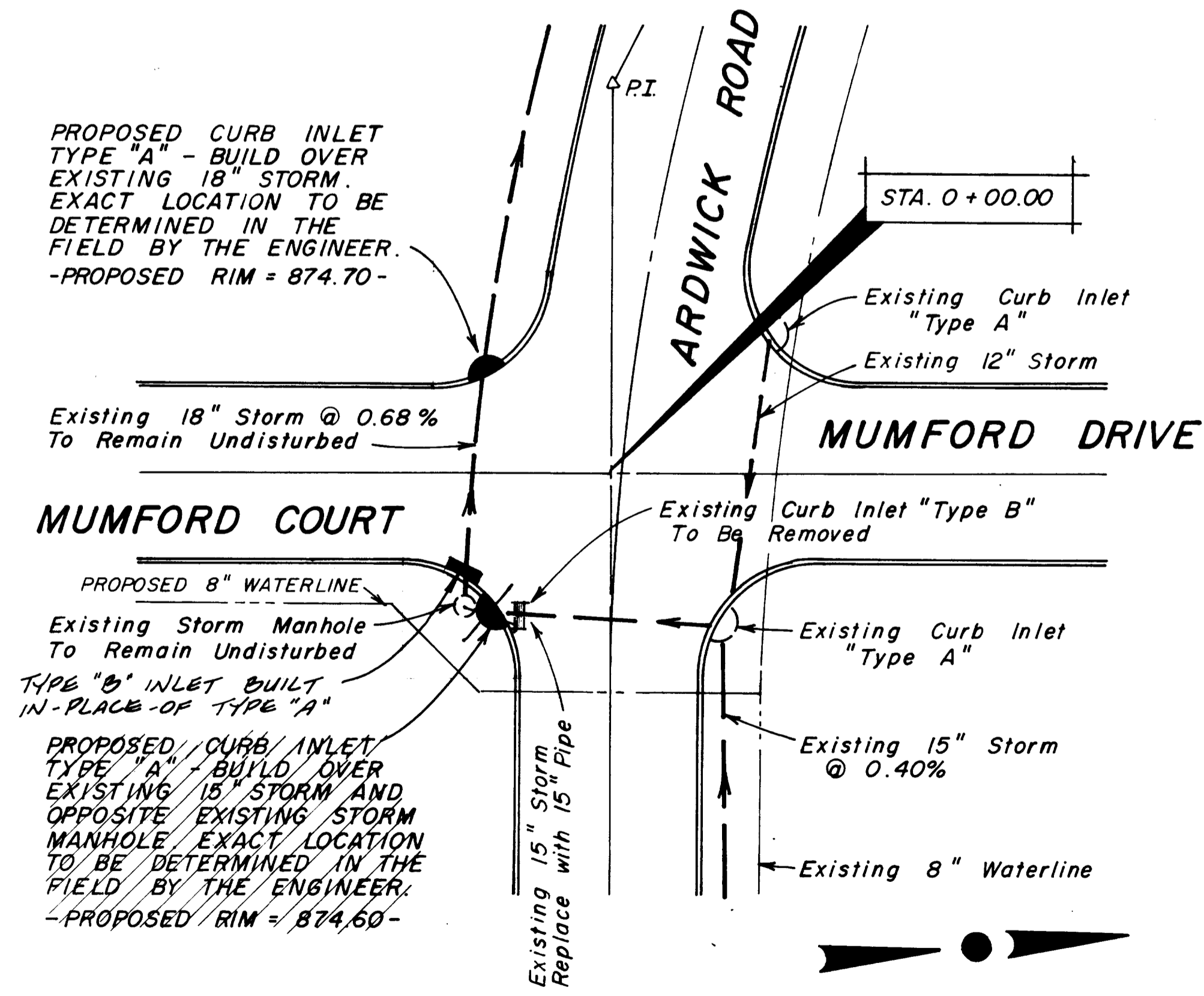
ALTERNATE BASE:  
ITEM 407 TACK COAT (0.1 gal. / sq. yd.)  
OVER ITEM 306 - 6 1/2" PORTLAND CEMENT CONCRETE BASE  
- CLASS "B", 4.1 BAG MIX -  
ITEM 453.10 - JOINTS FOR ALTERNATE BASE:  
CONTRACTION JOINTS SHALL BE PROVIDED NORMAL TO THE CENTERLINE OF PAVEMENT BY SAWING AT A MAXIMUM INTERVAL OF 18 FEET. THE JOINTS SHALL BE SAWED TO A MINIMUM DEPTH OF TWO (2) INCHES.



**DETAIL "A"**

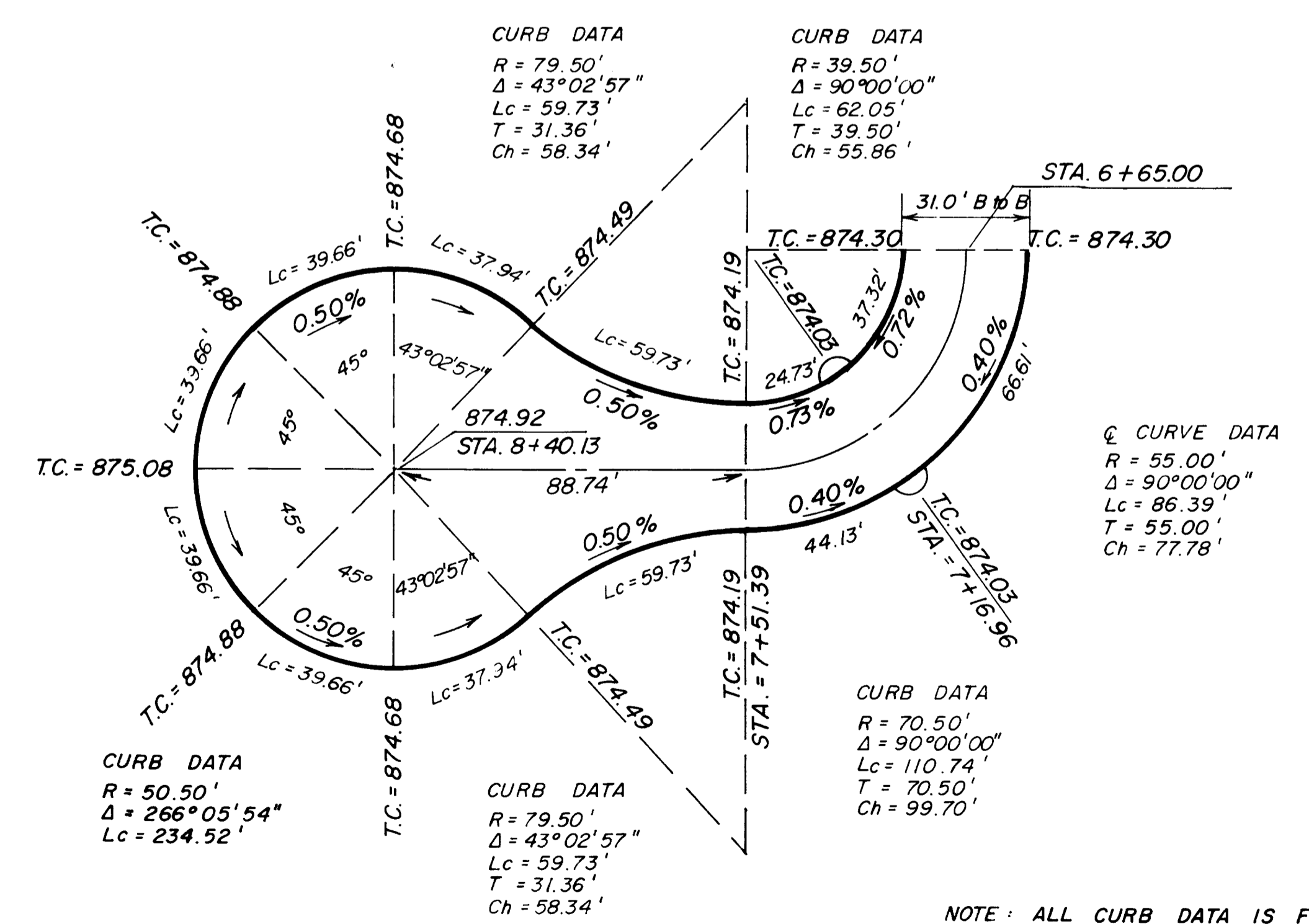
SCALE: 1" = 20' HORIZ.  
1" = 1' VERT.

\* IF IT IS FOUND THAT THE ABOVE EXISTING 8" WATERLINE IS LESS THAN 4.85' DEEP, THE CONTRACTOR WILL BE REQUIRED TO LOWER IT DURING CONSTRUCTION. THE CONTRACTOR MUST INFORM THE ENGINEER OF ITS DEPTH BEFORE CONTINUING WITH CONSTRUCTION.



**INTERSECTION DETAIL**

SCALE: 1" = 20'



**CUL-DE-SAC DETAIL**

SCALE: 1" = 30'

NOTE: ALL CURB DATA IS FROM BACK OF CURB.