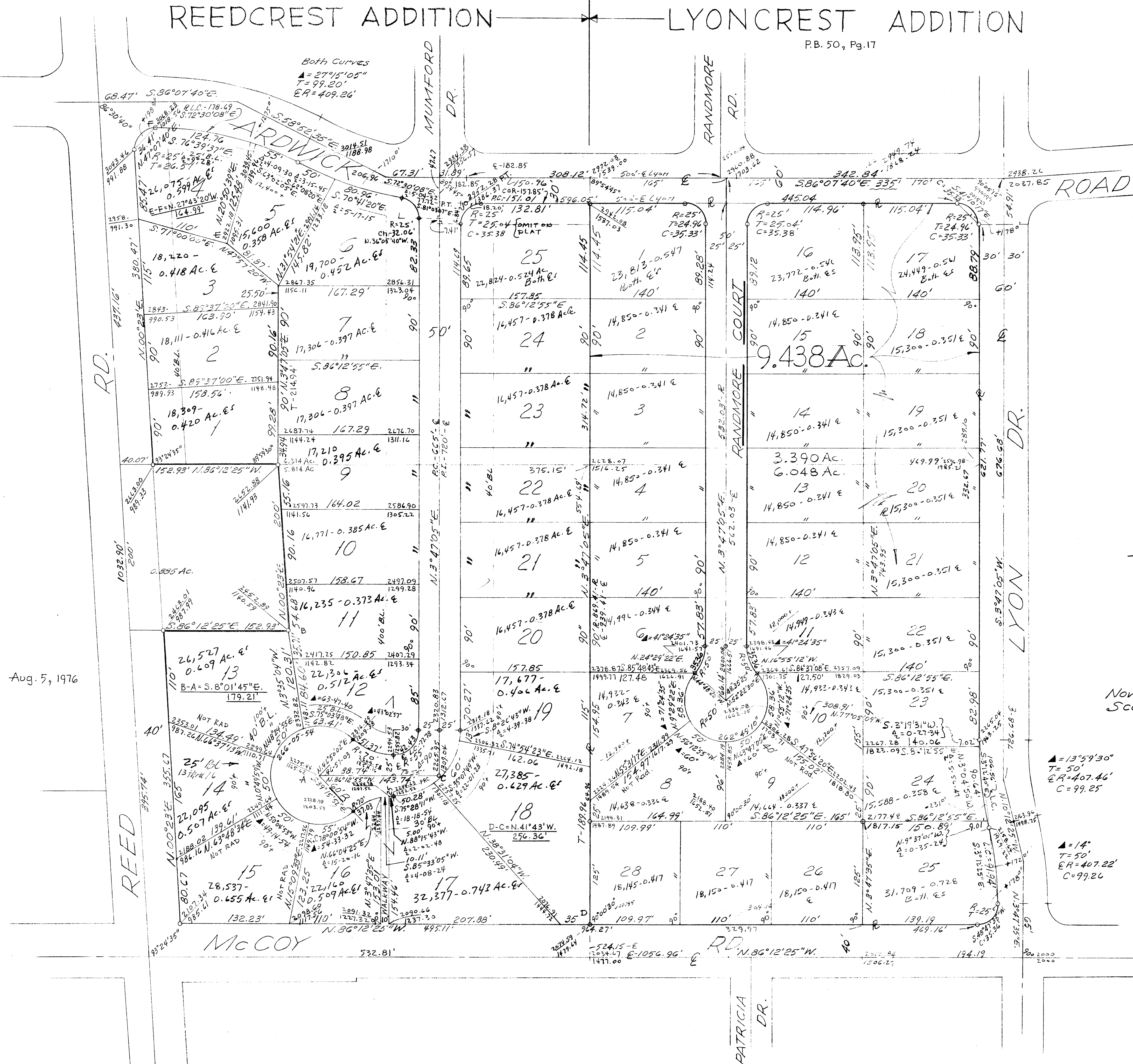


REEDCREST ADDITION LYONCREST ADDITION

P.B. 50, Pg. 17



Nov. 6, 1974.
Scale 1" = 60'

▲ = 13°59'30"
T = 50'
ER = 407.46'
C = 99.25'

▲ = 14°
T = 50'
ER = 407.22'
C = 99.26'

Aug. 5, 1976

Harry L. Greene,
Reg. Surveyor, 4058.