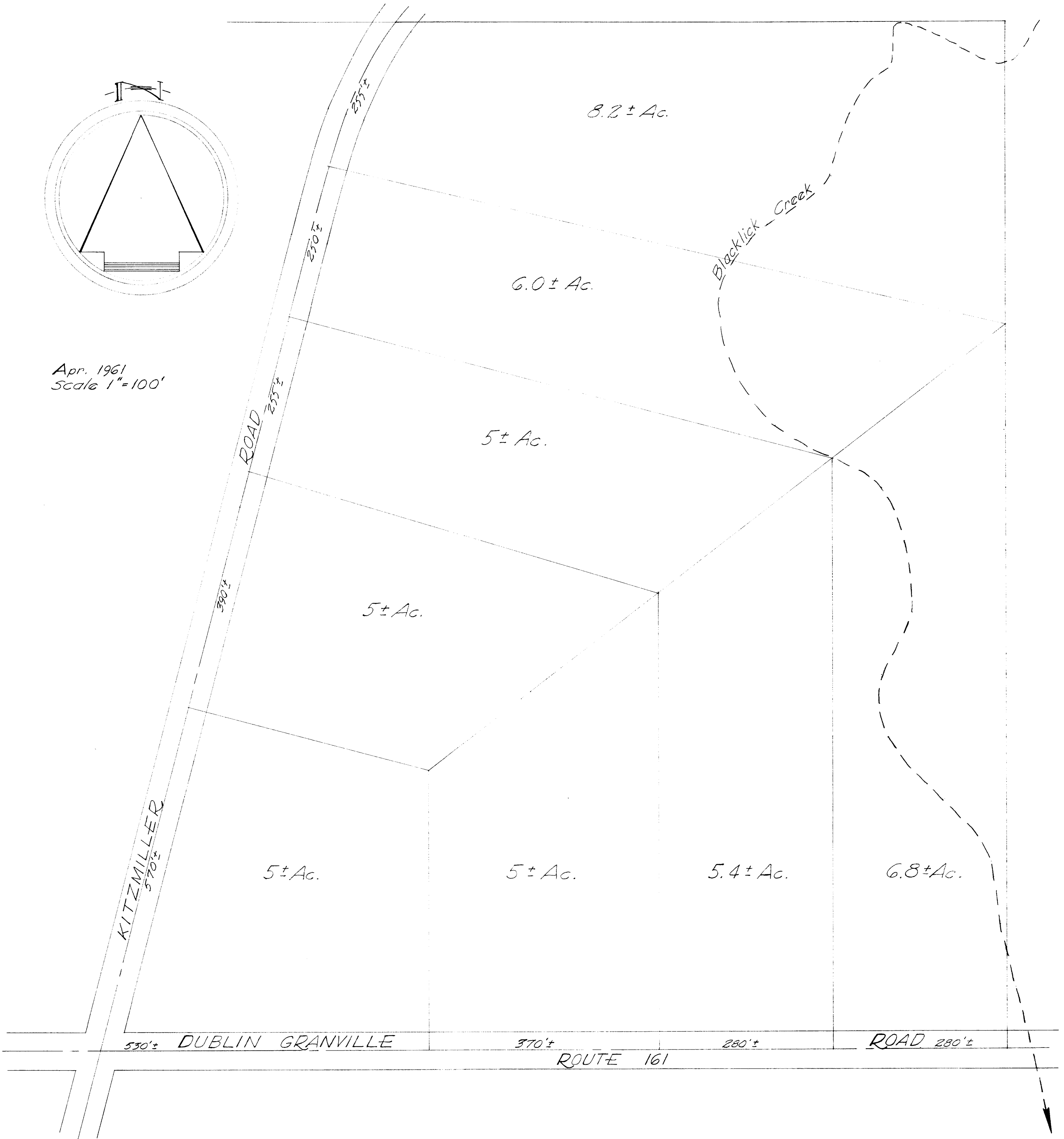


Apr. 1961
Scale 1"=100'



Map showing possible layout of the easterly part of Lot No. 23, Plain Tp., Fourth Quarter of Tp. 2, Range 16, U.S.M. Lands, Franklin County, OHIO,

for
TRESEMER & CARIS.

By Harry L. Greene
Harry L. Greene, Reg. Surveyor - No. 4058.