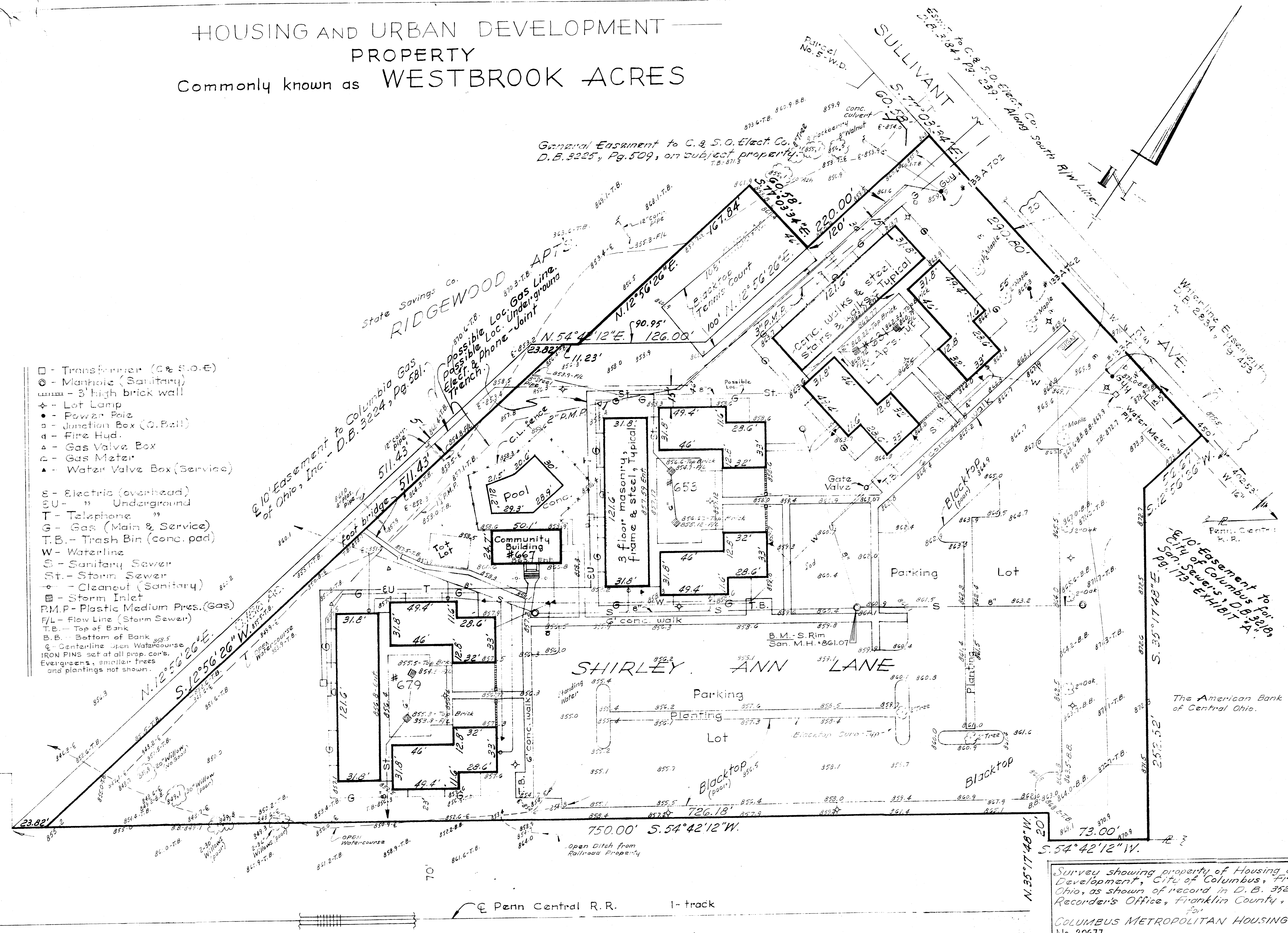


HOUSING AND URBAN DEVELOPMENT
 PROPERTY
 Commonly known as WESTBROOK ACRES

- - Transformer (C & S.O.E)
 - - Manhole (Sanitary)
 - ▬ - 3' high brick wall
 - ✦ - Lot Lamp
 - - Power Pole
 - - Junction Box (O. Ball)
 - ▲ - Fire Hyd.
 - △ - Gas Valve Box
 - △ - Gas Meter
 - ▲ - Water Valve Box (Service)
-
- E - Electric (overhead)
 - SU - " (Underground)
 - T - Telephone "
 - G - Gas (Main & Service)
 - T.B. - Trash Bin (conc. pad)
 - W - Waterline
 - S - Sanitary Sewer
 - St. - Storm Sewer
 - - Cleanout (Sanitary)
 - - Storm Inlet
 - R.M.P. - Plastic Medium Pres. (Gas)
 - F/L - Flow Line (Storm Sewer)
 - T.B. - Top of Bank
 - B.B. - Bottom of Bank
 - ⊕ - Centerline open Watercourse
 - IRON PINS set at all prop. cor's.
 - Evergreens, smaller trees and plantings not shown.



Survey showing property of Housing and Urban Development, City of Columbus, Franklin County, Ohio, as shown of record in D. B. 3528, Pg. 181, Recorder's Office, Franklin County, Ohio.

COLUMBUS METROPOLITAN HOUSING AUTHORITY.
 No. 20677
 1" = 30'

Harry L. Greene - Reg. Surveyor - 4058
 Mar. 27, 1978.