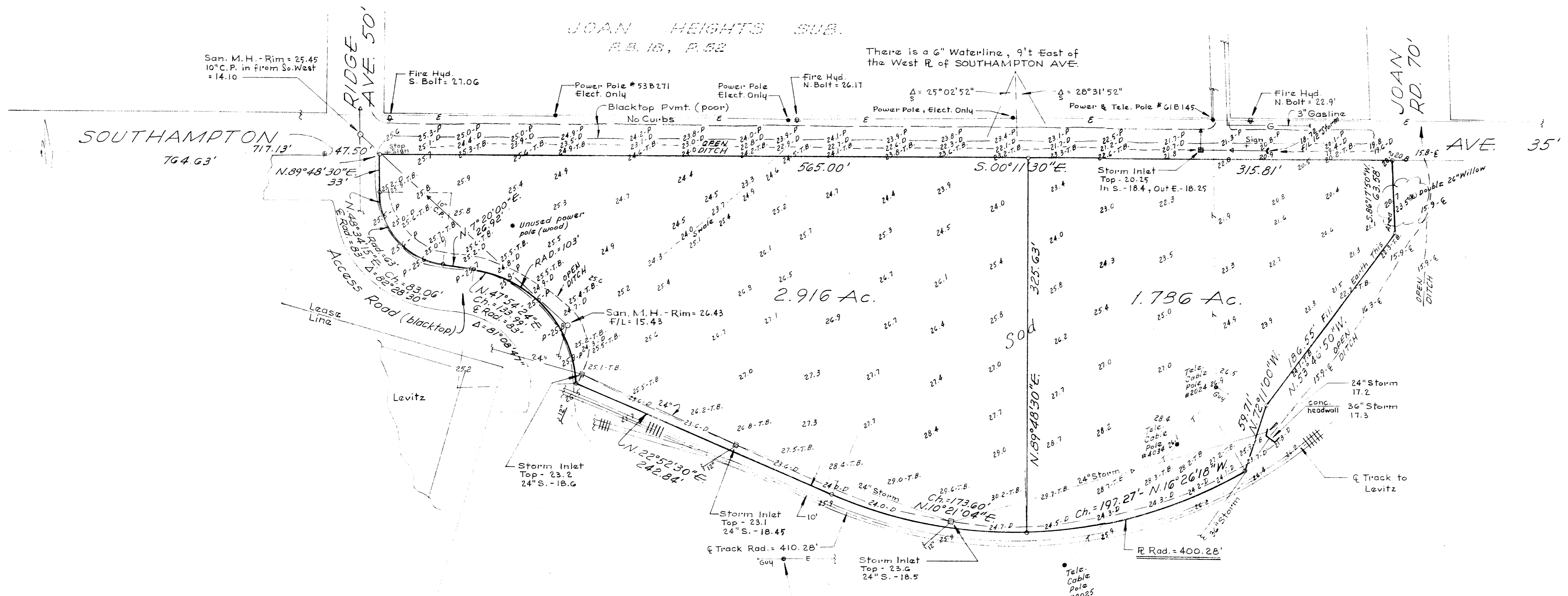


VALLEY VIEW DRIVE



San. M. H. - Rim = 25.45
10" C. P. in Firem Ss. West = 14.10

There is a 6" Waterline, 9' East of the West R. of SOUTHAMPTON AVE.

JOAN HEIGHTS SUB.
P.B. 15, P. 52

SOUTHAMPTON AVE. 35'

JOAN RD. 70'

RIDGE AVE. 50'

2.916 Ac.

1.786 Ac.

Levitz

B.M. - Spike S.E. Side of Utility Pole No. G1B332, at rear of WOOLCO BLDG. - Elev. = 827.68 U.S.G.S.

+ Add 800.00 ft to Elevations Shown for U.S.G.S.

D - Ditch
T.B. - Top of Bank
P - Pavement (Edge)
T - Telephone (overhead cable)
E - Electric

— o — = IRON PIN COR'S.

Survey and Topo showing part of a 43.179 Ac. Tract, City of Columbus, Ohio, being part of V.M.S. 3315, as shown in a deed to Progress Enterprises, Inc., of record in Deed Book 1833, Page 475, Recorder's Office, Franklin County, Ohio.

April 6, 1978

Scale 1" = 50'

Harry L. Greene
Harry L. Greene, Reg. Surveyor - 4058.