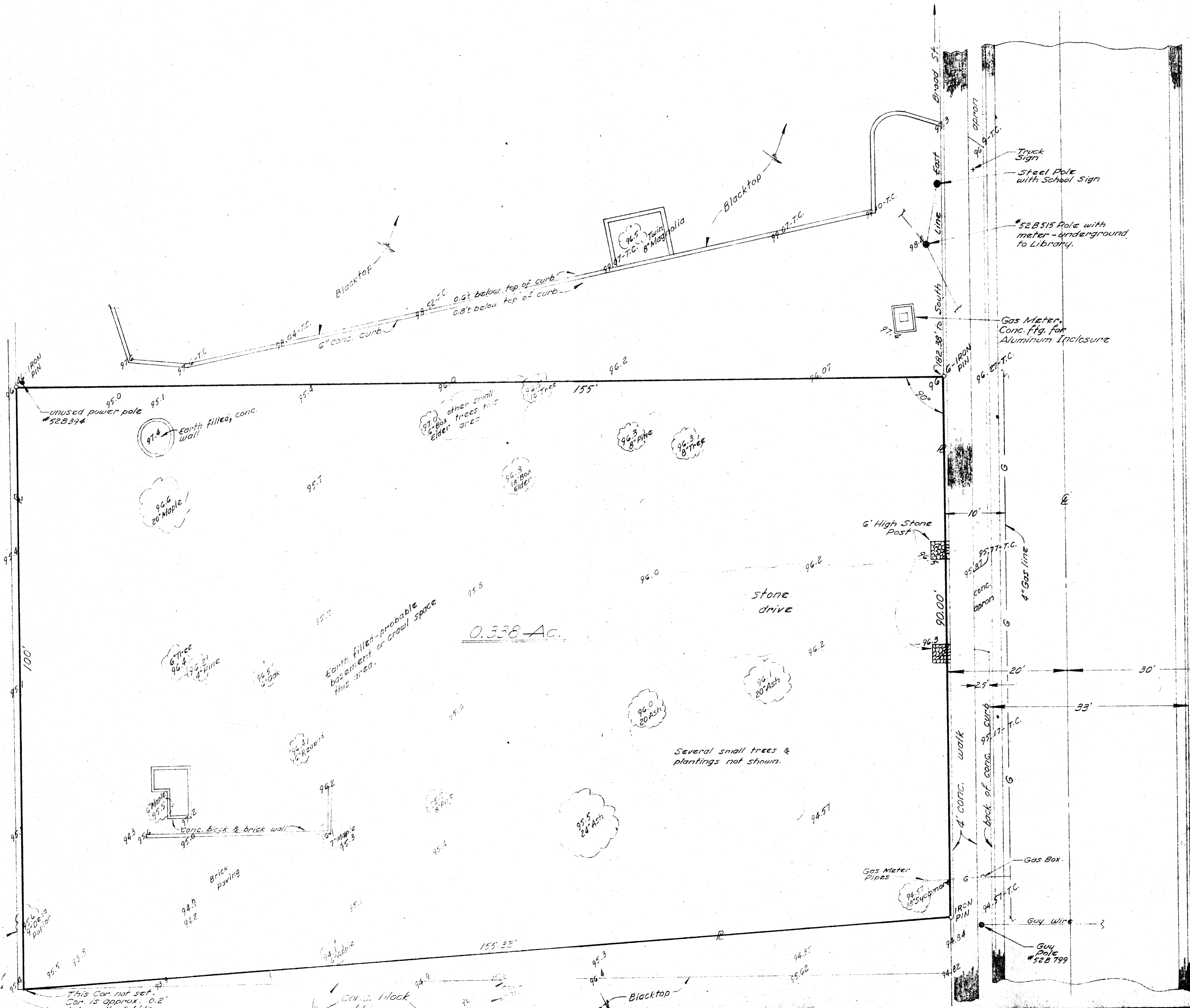
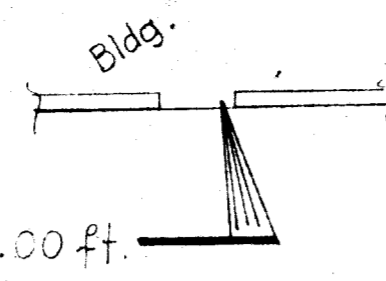


E.M. - Assumed Elev. of 100.00 ft.
 on top of fin. floor at side
 door of Library Bldg.



Feb. 19, 1970
 Scale 1" = 8'-0"

No San. Sewer available.
 T.C. = Top of Curb (back)
 Decimal Point in Elev. Fig.
 represents location of shot.

Map & Survey showing property of
 The Columbus Public Library, City
 Whitehall, of record in Deed Book
 2004, Pg. 10, Recorder's Office,
 Franklin County, Ohio.

Harry L. Greene
 Harry L. Greene, Real Surveyor