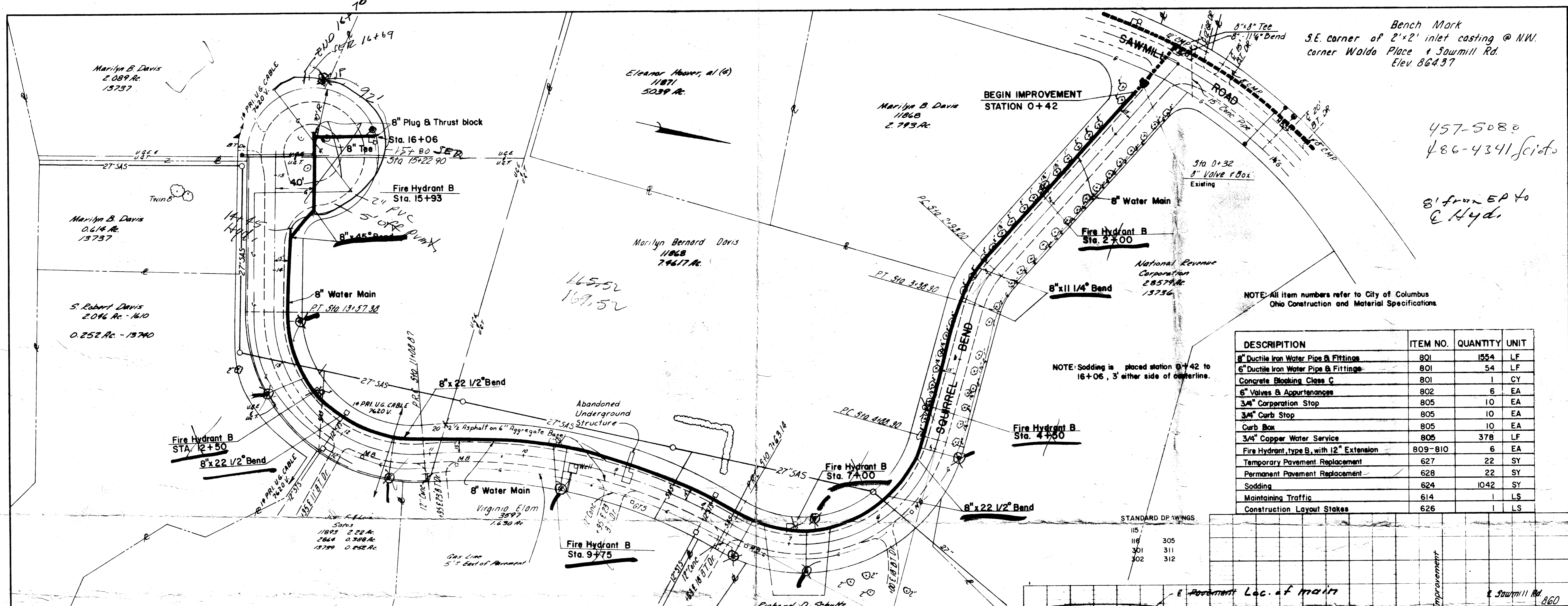


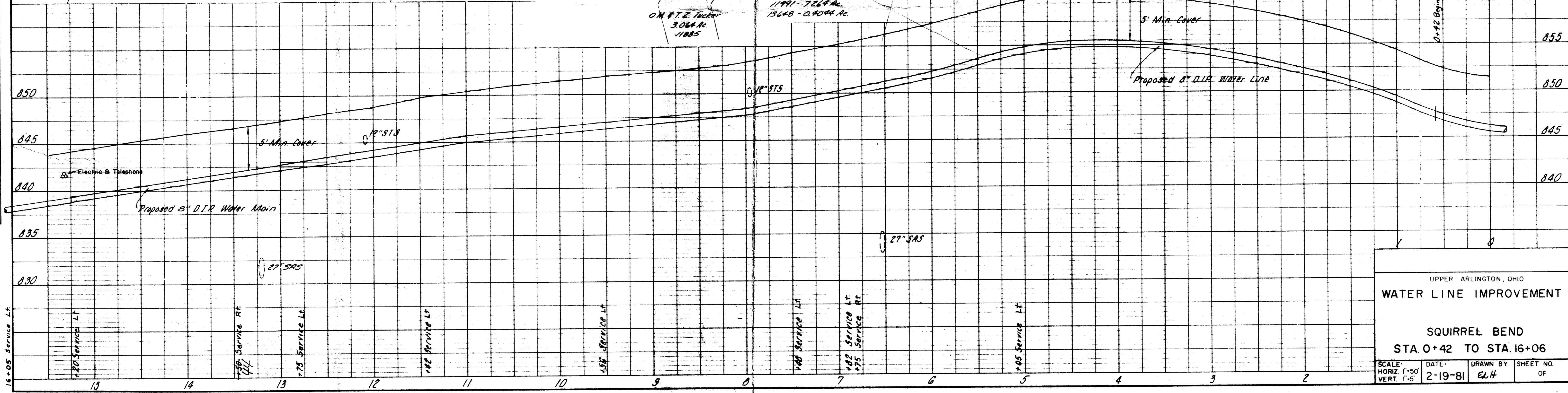
DATE	
BY	
REVISION	
NO. 1	
NO. 2	
NO. 3	
NO. 4	
NO. 5	
NO. 6	
NO. 7	
NO. 8	
NO. 9	
NO. 10	
NO. 11	
NO. 12	
NO. 13	
NO. 14	
NO. 15	
NO. 16	
NO. 17	
NO. 18	
NO. 19	
NO. 20	
NO. 21	
NO. 22	
NO. 23	
NO. 24	
NO. 25	
NO. 26	
NO. 27	
NO. 28	
NO. 29	
NO. 30	
NO. 31	
NO. 32	
NO. 33	
NO. 34	
NO. 35	
NO. 36	
NO. 37	
NO. 38	
NO. 39	
NO. 40	
NO. 41	
NO. 42	
NO. 43	
NO. 44	
NO. 45	
NO. 46	
NO. 47	
NO. 48	
NO. 49	
NO. 50	

DATE	
BY	
REVISION	
NO. 1	
NO. 2	
NO. 3	
NO. 4	
NO. 5	
NO. 6	
NO. 7	
NO. 8	
NO. 9	
NO. 10	
NO. 11	
NO. 12	
NO. 13	
NO. 14	
NO. 15	
NO. 16	
NO. 17	
NO. 18	
NO. 19	
NO. 20	
NO. 21	
NO. 22	
NO. 23	
NO. 24	
NO. 25	
NO. 26	
NO. 27	
NO. 28	
NO. 29	
NO. 30	
NO. 31	
NO. 32	
NO. 33	
NO. 34	
NO. 35	
NO. 36	
NO. 37	
NO. 38	
NO. 39	
NO. 40	
NO. 41	
NO. 42	
NO. 43	
NO. 44	
NO. 45	
NO. 46	
NO. 47	
NO. 48	
NO. 49	
NO. 50	



DESCRIPTION	ITEM NO.	QUANTITY	UNIT
8" Ductile Iron Water Pipe & Fittings	801	1554	LF
6" Ductile Iron Water Pipe & Fittings	801	54	LF
Concrete Blocking Class C	801	1	CY
6" Valves & Appurtenances	802	6	EA
3/4" Corporation Stop	805	10	EA
3/4" Curb Stop	805	10	EA
Curb Box	805	10	EA
3/4" Copper Water Service	805	378	LF
Fire Hydrant, type B, with 12" Extension	809-810	6	EA
Temporary Pavement Replacement	627	22	SY
Permanent Pavement Replacement	628	22	SY
Sodding	624	1042	SY
Maintaining Traffic	614	1	LS
Construction Layout Stakes	626	1	LS

STANDARD DRAWINGS	
115	
116	305
301	311
302	312



UPPER ARLINGTON, OHIO  
**WATER LINE IMPROVEMENT**  
 SQUIRREL BEND  
 STA. 0+42 TO STA. 16+06  
 SCALE: HORIZ. 1"=50' VERT. 1"=5'  
 DATE: 2-19-81  
 DRAWN BY: ELH  
 SHEET NO. OF