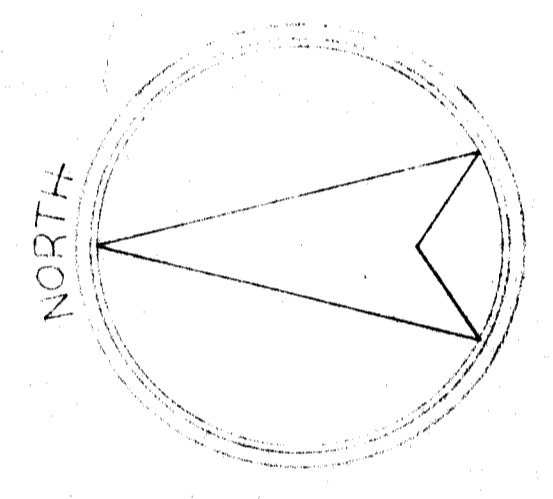
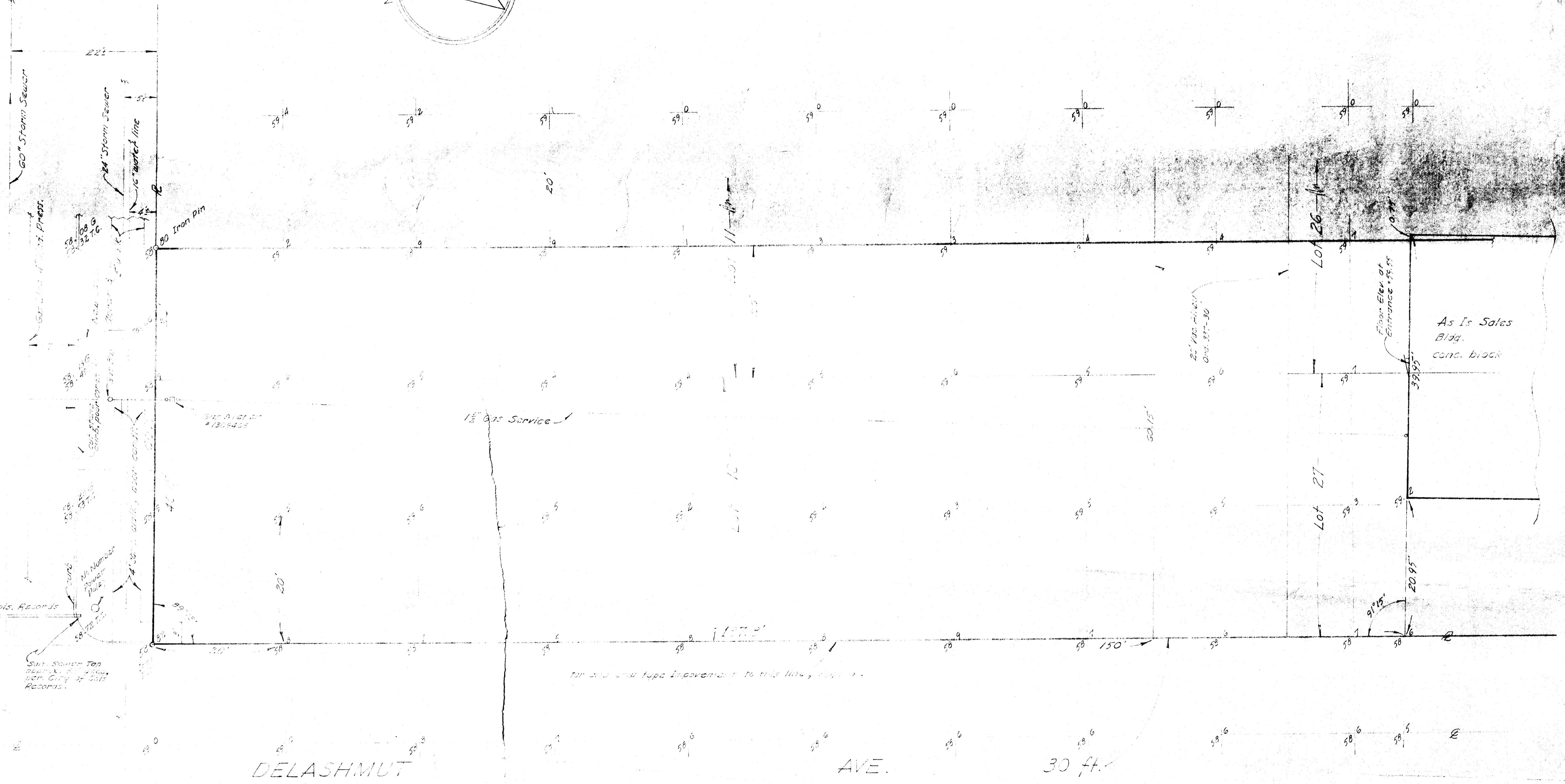


—EM—
 FIL Elev. in this San. M.H. #24
 per City of Columbus Info.
 is 47.07 - East Rim = 57.97



AVE. 60 ft.



DELASHMUT

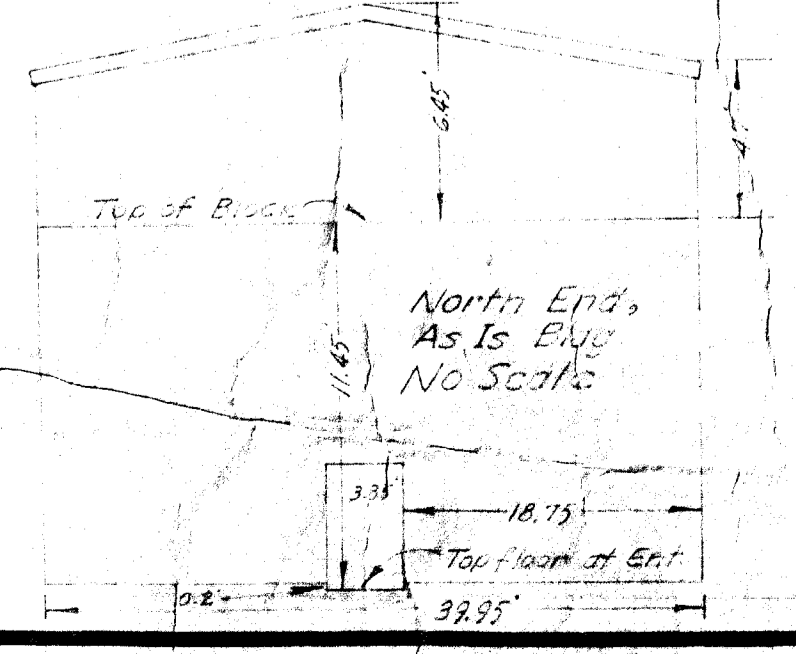
AVE.

30 ft.

FIFTH

San. M.H.
 East Rim = 57.28
 57.4 = 47.98

White Castle Bldg.



S-Gutter
 T.O. = Top of Curb

THIS MAP SHOWING 20' GRID, GOODWILL
 INDUSTRIES PROPERTY, CITY OF
 COLUMBUS, FRANKLIN COUNTY, OHIO,
 SALZGEBER, and GOMPERS SUBDIVISION.
 January 12, 1965 Scale 1/4" = 10'
 Harry L. Greene
 Harry L. Greene - Reg. Surveyor #4039

GOODWILL INDUSTRIES PROP.

FRED E. WRIGHT - W. GILFILLAN - RONALD W. WESKE ARCHITECTS

DATE	BY	CHECKED	DATE
SHEETS	COM. NO.	CITY NO.	