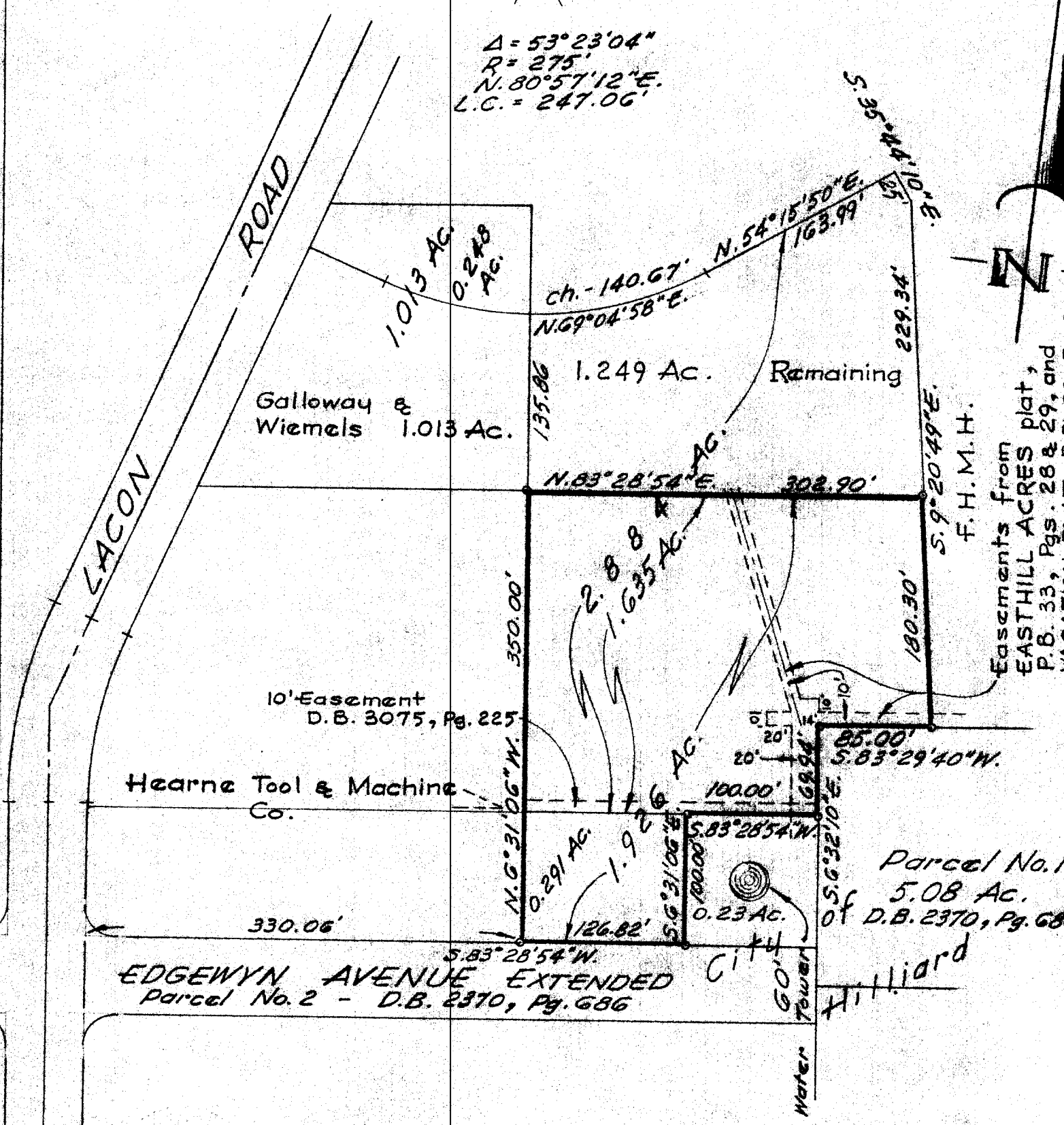


$\Delta = 53^{\circ}23'04''$   
 $R = 275'$   
 $N. 80^{\circ}57'12'' E.$   
 $L.C. = 247.06'$



Dec. 28, 1971  
 Scale 1" = 100'

Survey showing 1.926 Ac. Tract, City of Hilliard, part of V.M.S. No. 3001, also part of vacated portion of EASTHILL ACRES, P.B. 33, Pgs. 28 & 29, and 2 VACATION PLATS, P.B. 38, Pg. 20, & P.B. 38, Pg. 58, Recorder's Office, Franklin County, Ohio.

Harry L. Greene, Reg. Surveyor - No. 4058.