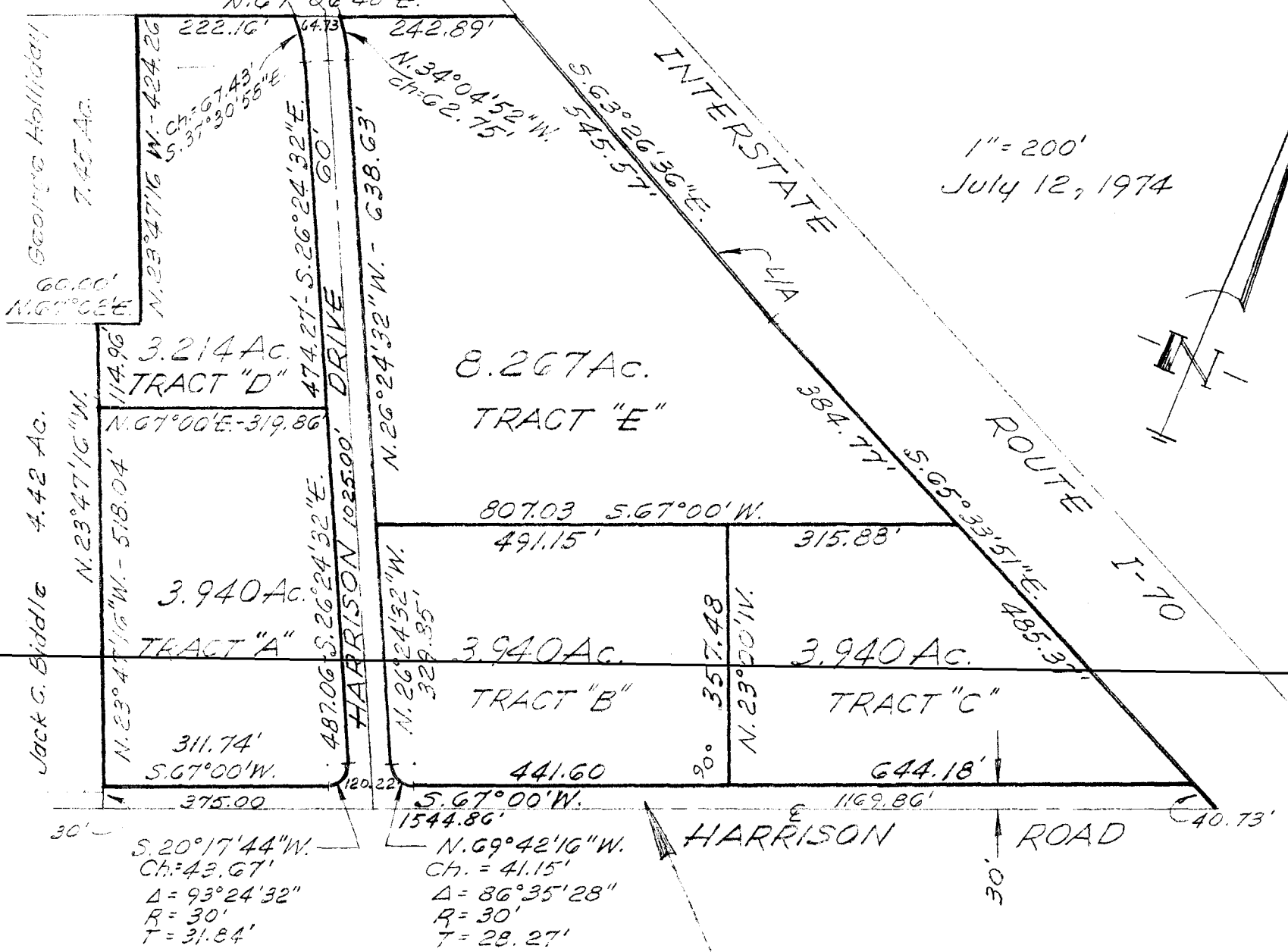
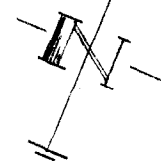


Benjamin L. Cox, Trustee
 22.813 Ac.
 $\Delta = 37^{\circ}00'$
 $R = 205.00'$
 $T = 68.54'$



1" = 200'
 July 12, 1974



Bldg. Lines & Easements not shown.

Plat showing division of a 25.626 ac. tract, HARRISON ROAD INDUSTRIAL PARK, D.B. 3176, Pg. 621, part of V.M.S. No. 530, City of Columbus, Franklin County, Ohio

HARRISON ROAD INDUSTRIAL PARK STREET DEDICATION PLAT, P.B. - 45, Pg. 25.

Harry L. Greene
 Harry L. Greene, Reg. Surveyor No. 4058.