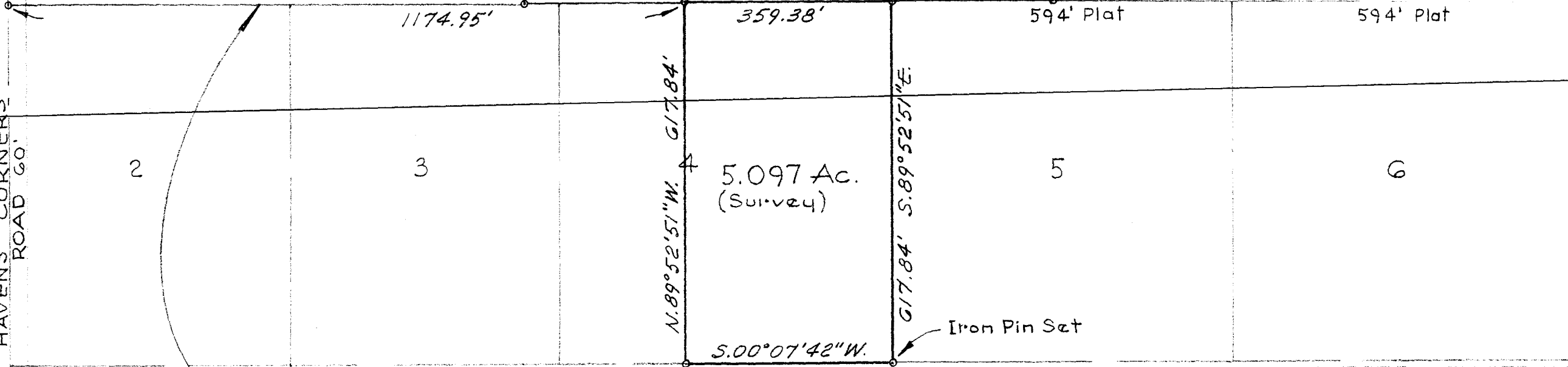
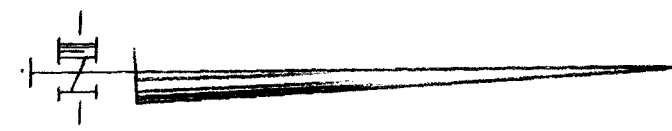


HAVENS CORNERS
ROAD 60'

7.226 Ac.

13.085 Ac. ±
Deed

6.801 Ac. (Survey)



Partition Plat - Complete Record 38, Pg. 81 and Plat Book 1, Pg. 356.

Survey of 5.097 Ac. Tract in the State of Ohio, County of Franklin,
Township of Jefferson and being part of Lot 14, Sec. 2, Tp. 1, Range 16,
U.S.M. Lands.

Harvey L. Greene

1" = 200'
Dec. 12, 1978.

Harvey L. Greene, Public Surveyor, Ohio