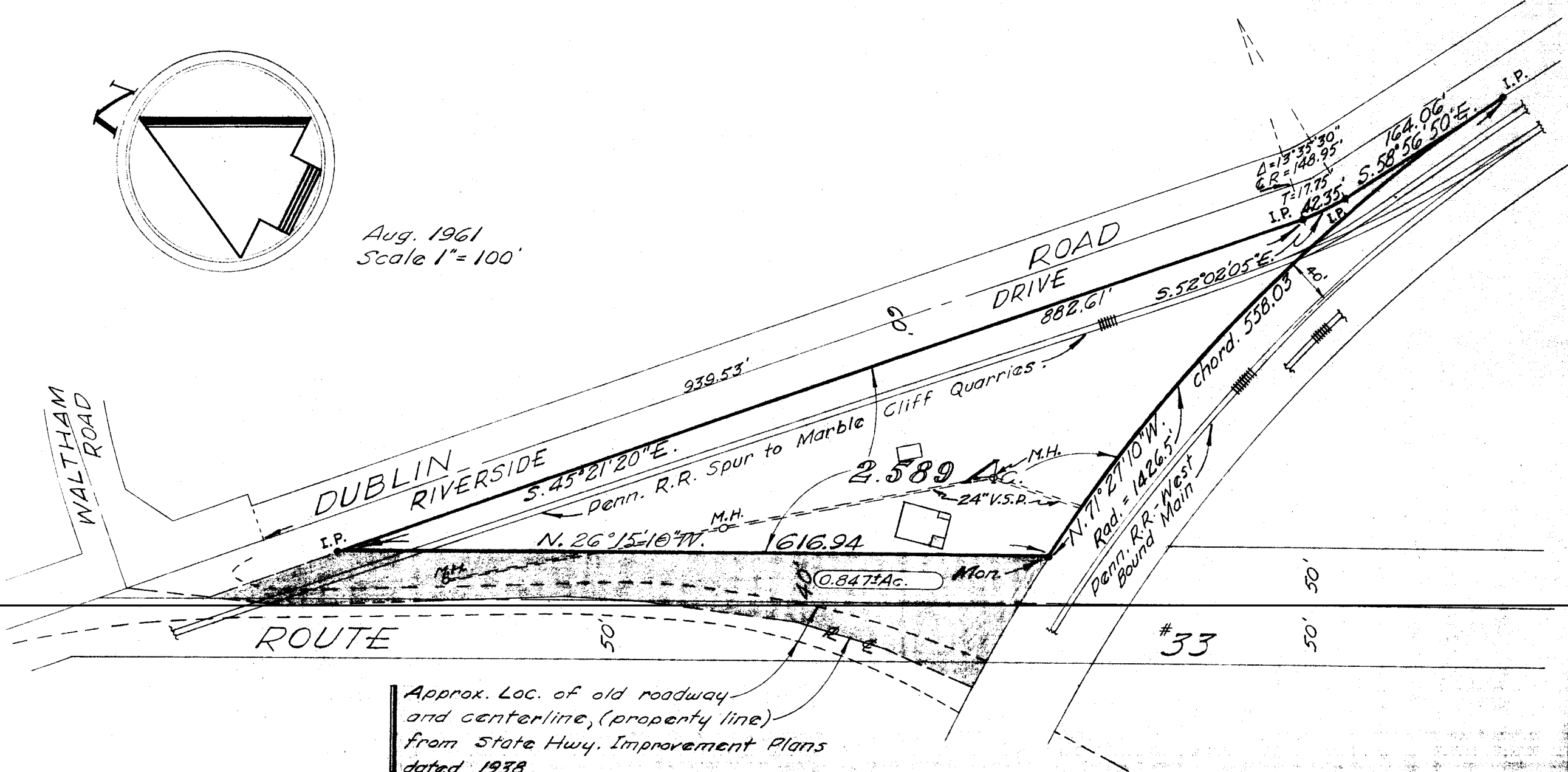


Aug. 1961
Scale 1" = 100'



Approx. Loc. of old roadway and centerline, (property line) from State Hwy. Improvement Plans dated 1938.

Map showing a 2.589 Ac. Tract and a 0.847± Ac. Tract in Perry Twp., Franklin County, Ohio, and being part of Lots Nos. 1 and 2 of the JAMES T. MILLER'S MARBLE CLIFF FARM, as the same is shown of record in Plat Book 5, pg. 34, Recorder's Office, Franklin County, Ohio. (Subject to any easements and Railroad Right-of-Way of record.) Harry L. Greene

Harry L. Greene, Reg. Surveyor - No. 4058.