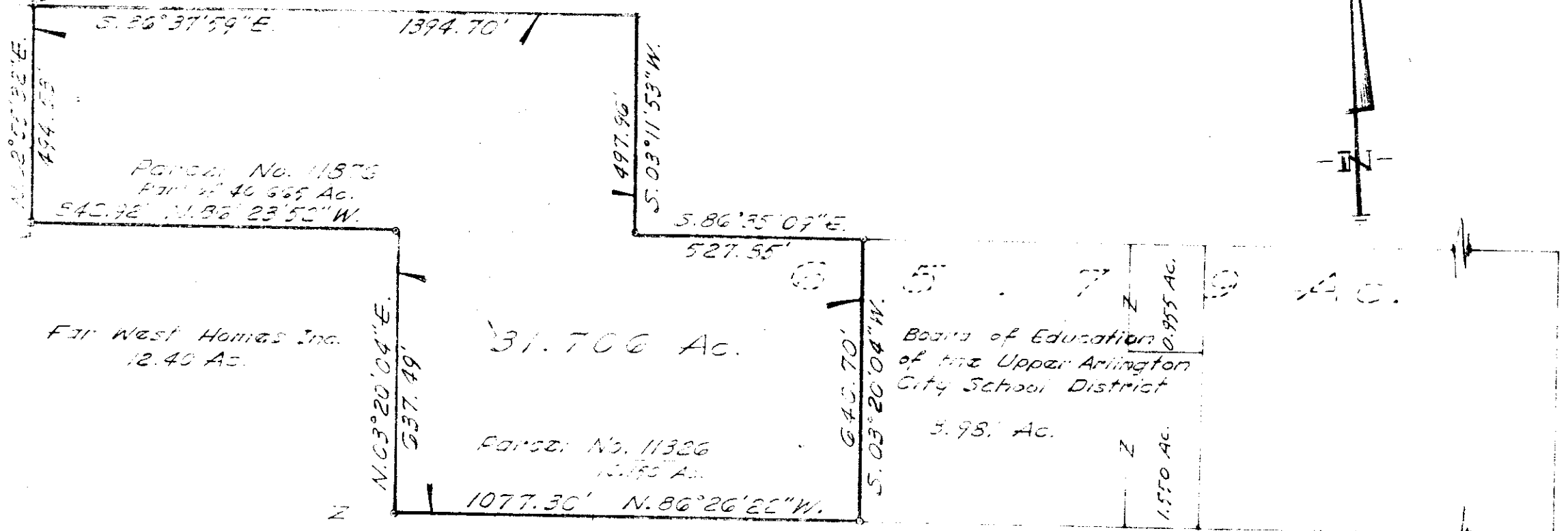


M.P. Davis
7.24 Ac.

Mary F. Rogers
85.634 Ac.

Bzzgin
E. 135.11' 11.53" W.



Jan. 6, 1970
Scale 1" = 30'
-o- = iron pins
-•- = stone

Survey showing 31.706 Ac. Tract, being part of Parcel II (65.79 Ac.) Cont. of Transfer, D.E. 1685, pgs. 355-56, Recorder's Office, Franklin County, Ohio. Being part 1st. Qtr., 1st. Tp., R. 19, U.S. Mt. Lands, City of Upper Arlington, Ohio.
Drawn by [Signature]