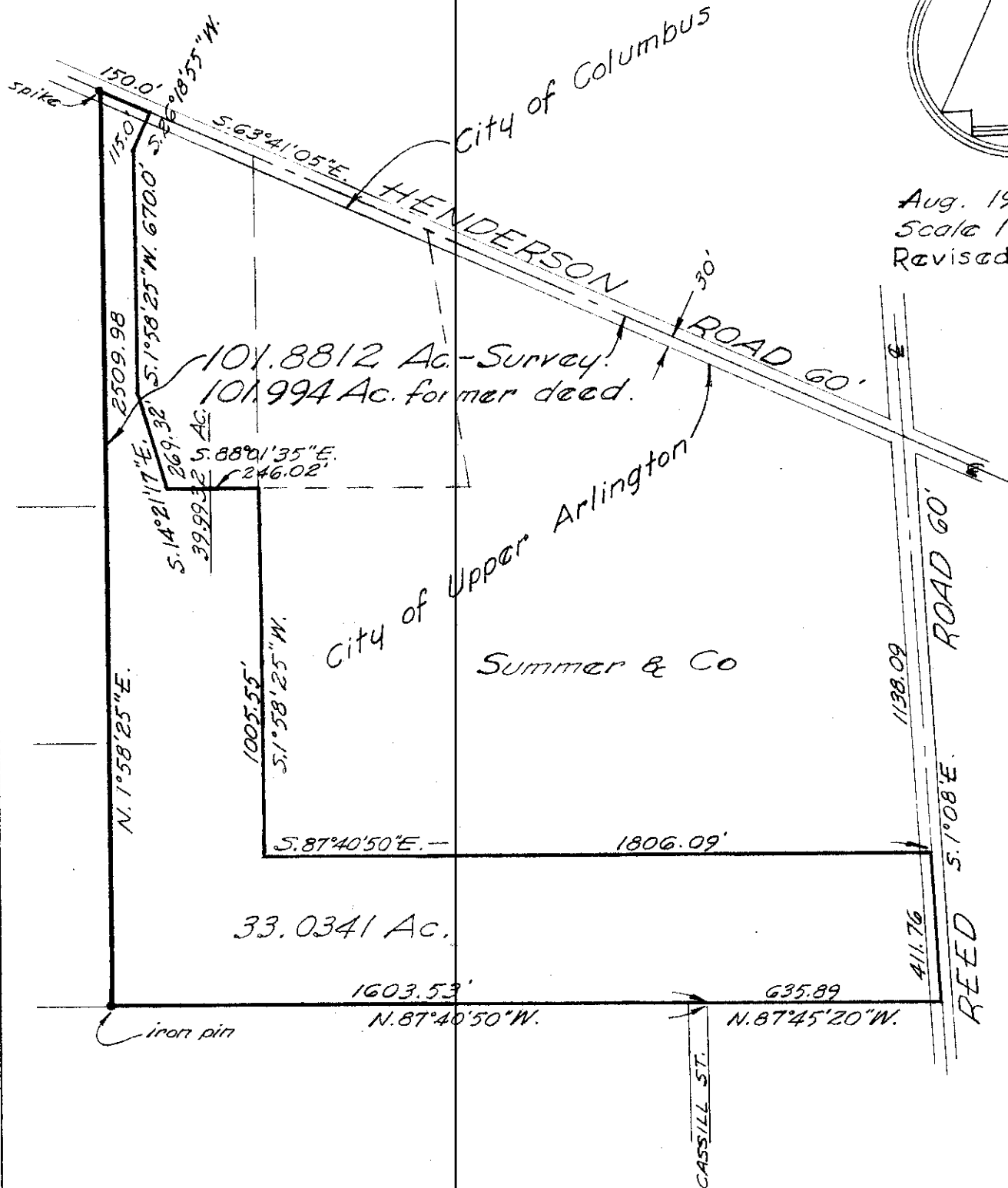


Aug. 1962
 Scale 1"=400'
 Revised Nov. 6-1965



39.9898 Ac. - Deed Book 2524, pg. 46 - 870 Investment Co.
 101.994 Ac. - Deed Book 2220, pgs. 332, 335 & 337 - Summer & Co.

Map showing a 33.0341 Ac. Tract, out of a 39.9898 Ac. Tract, recent survey shows 39.9932 acres; said 39.9932 acres being a part of a 101.994 Ac. Tract, recent survey shows 101.8812 acres, and being part of Qtr. Twp. 4, Twp. 1, R. 19, U.S.M. Lands, City of Upper Arlington and City of Columbus, Franklin County, Ohio.

The word Survey on the above map pertains to a recent survey made in July 1962, by myself.

Harry L. Greene
 Harry L. Greene, Reg. Surveyor - No. 4058.