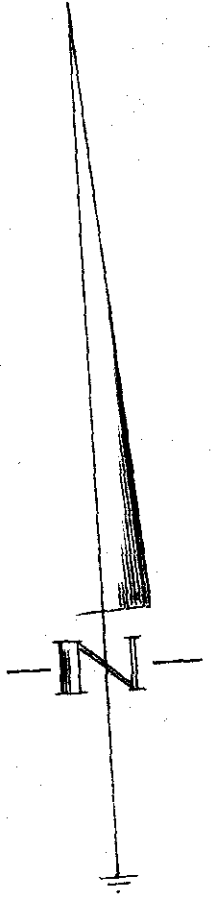
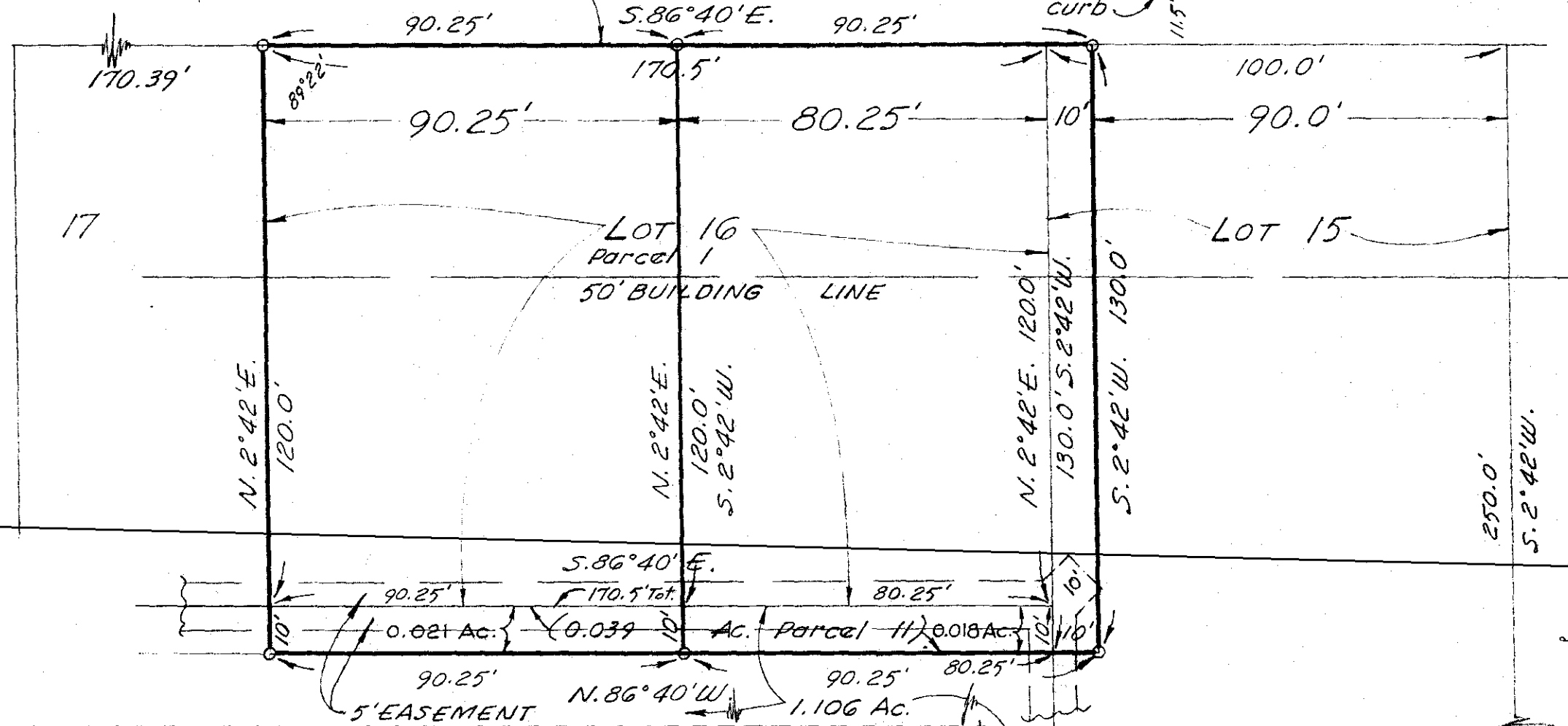


MARSHLYN COURT
50' Right-of-Way
27' Improvement

REED ROAD



Aug. 3-1967
Scale 1"=30'

Plat showing split of Lot No. 16 and Lot No. 15, of PERRY HEIGHTS ADDITION NO. 2, of record in Plat Book No. 24, pg. 88, Recorder's Office, Franklin County, Ohio.

Harry L. Greene
Harry L. Greene, Reg. Surveyor - No. 4058.

130.0'
100.0'