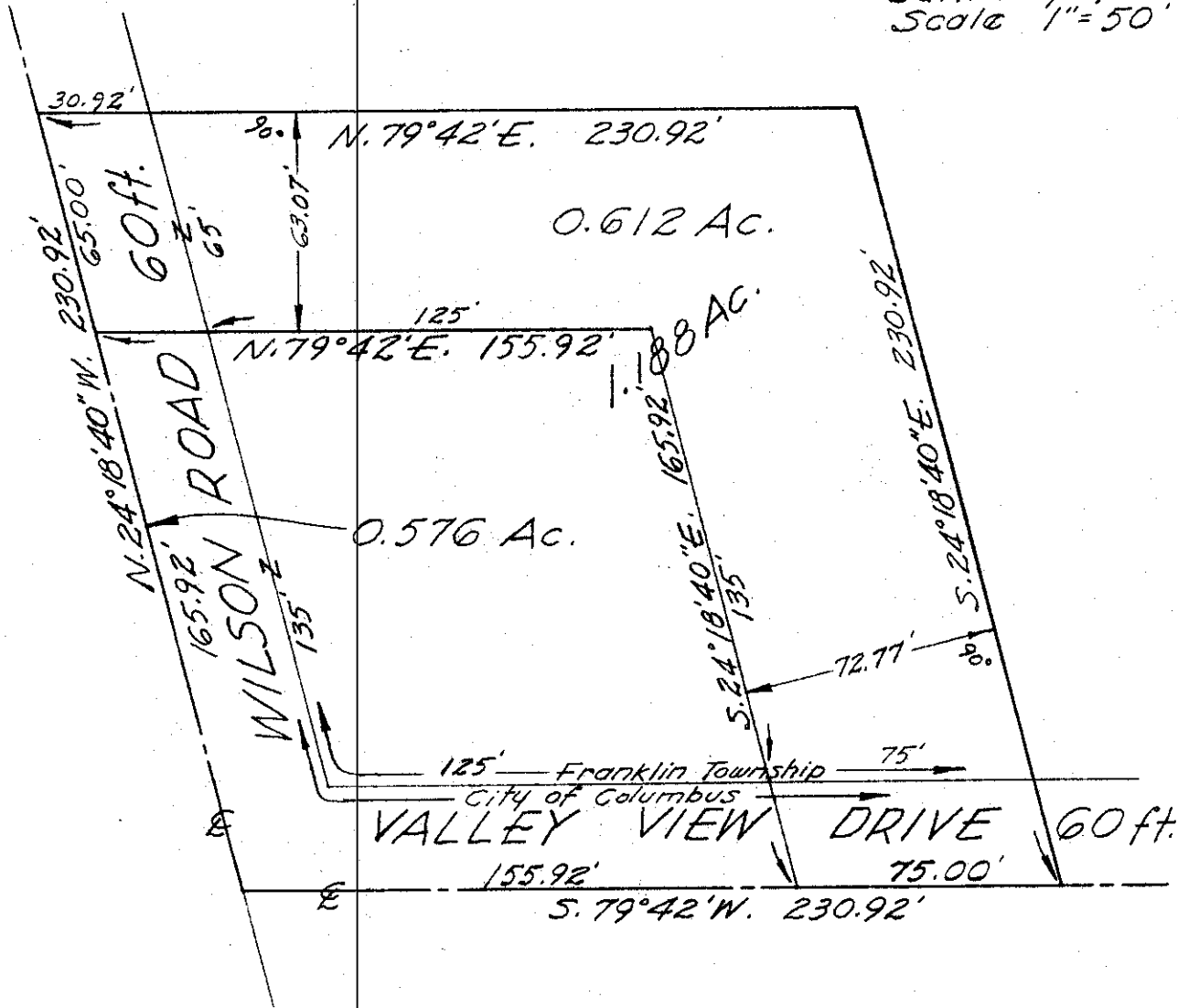


Jan. 12, 1966
Scale 1" = 50'



Plat showing division of a certain 1.188 Acre Tract partly in the City of Columbus, and partly in the Township of Franklin, as the same was conveyed to Morris L. Mattlin, by deed of record in Deed Book 2696, pg. 446, Recorder's Office, Franklin County, Ohio.

Harry L. Greene
Harry L. Greene, Reg. Surveyor - No. 4058.

1201-66