

NORTH



Mar. 12, 1964  
Scale 1" = 20'

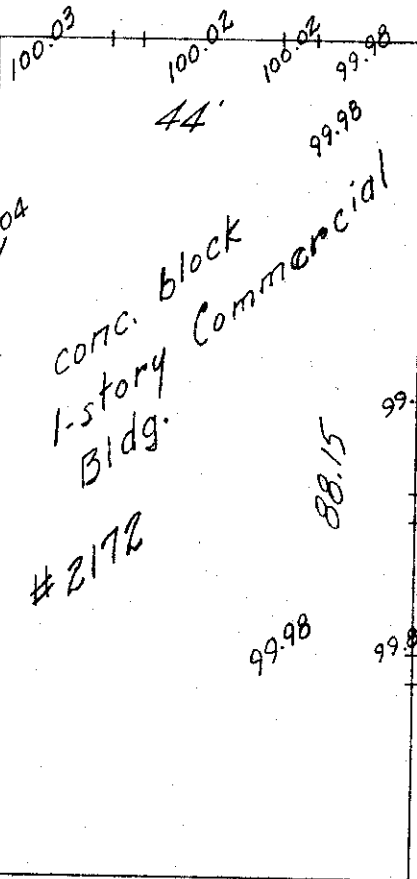
Ave.



15.5' Dia.

13.5'

31'



Elev. of 100.00' assumed top of footer outside of bldg.

top of footer. 99.88.

Mckinley

R-03-64

Drawing showing relative elevations on finished floor and footer of bldg. known as 2172 McKinley Ave. City of Columbus, Franklin County, Ohio

Decimal point in Elev. Fig. represents location of shot unless otherwise shown.

for - Mr. Robert Davis  
Harry L. Greene

Harry L. Greene, Reg. Surveyor - No. 4058.