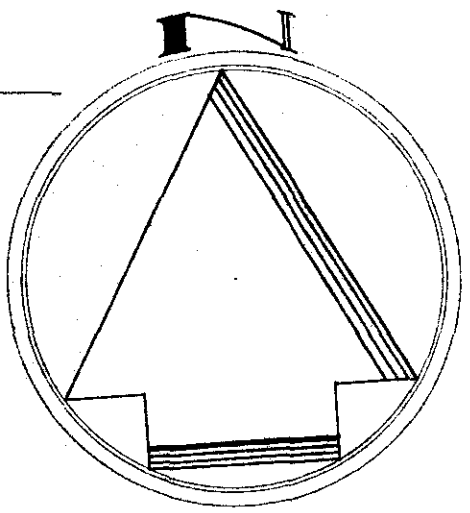
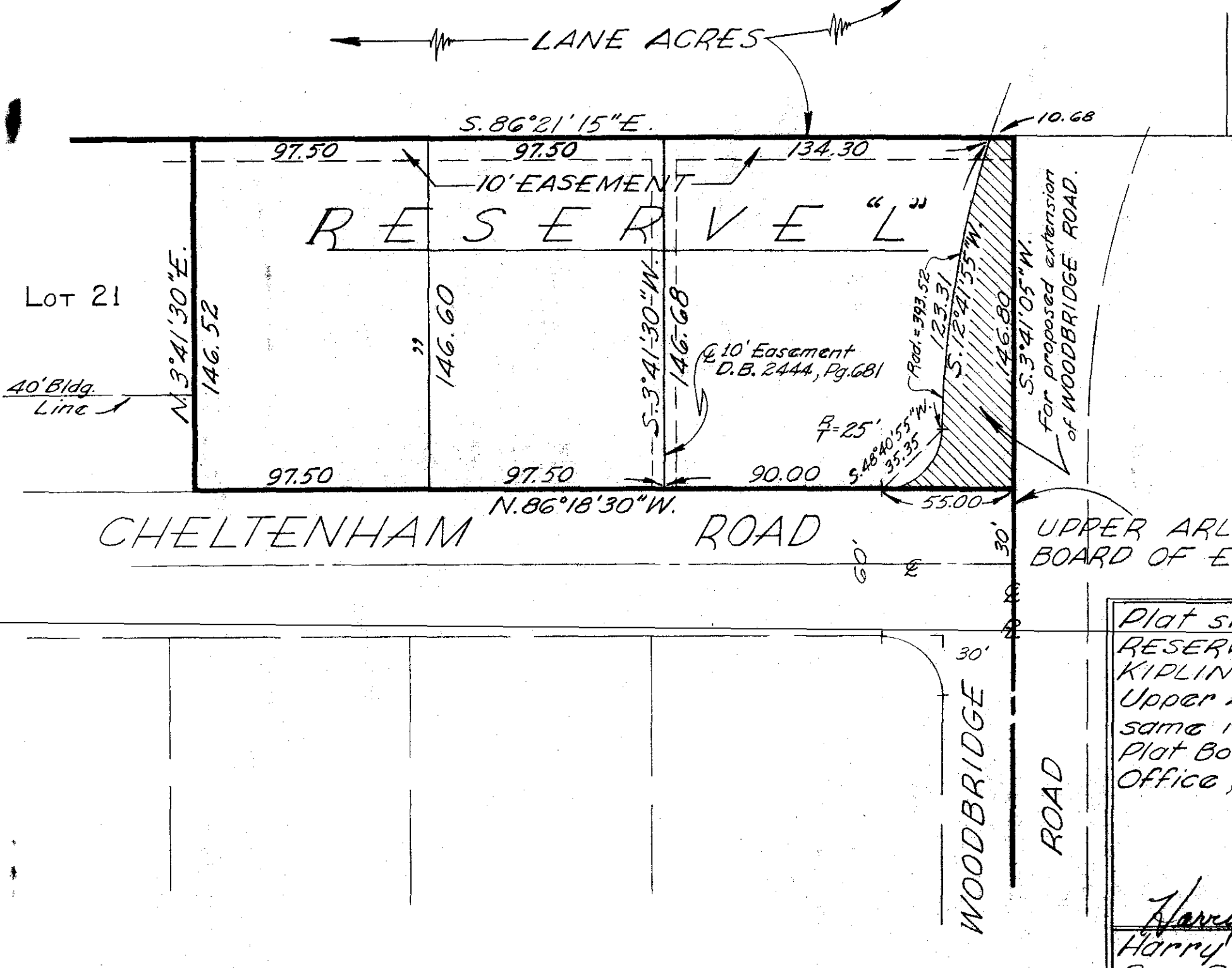


LANE ACRES



Feb. 26, 1963  
Scale 1" = 50'

UPPER ARLINGTON  
BOARD OF EDUCATION

Plat showing division of  
RESERVE "L", SHELBOURNE -  
KIPLING ADDITION, City of  
Upper Arlington, Ohio, as the  
same is shown of record in  
Plat Book No. 34, Pg. 35, Recorder's  
Office, Franklin County, Ohio.

Harry L. Greene  
Harry L. Greene,  
Reg. Surveyor - No. 4058.