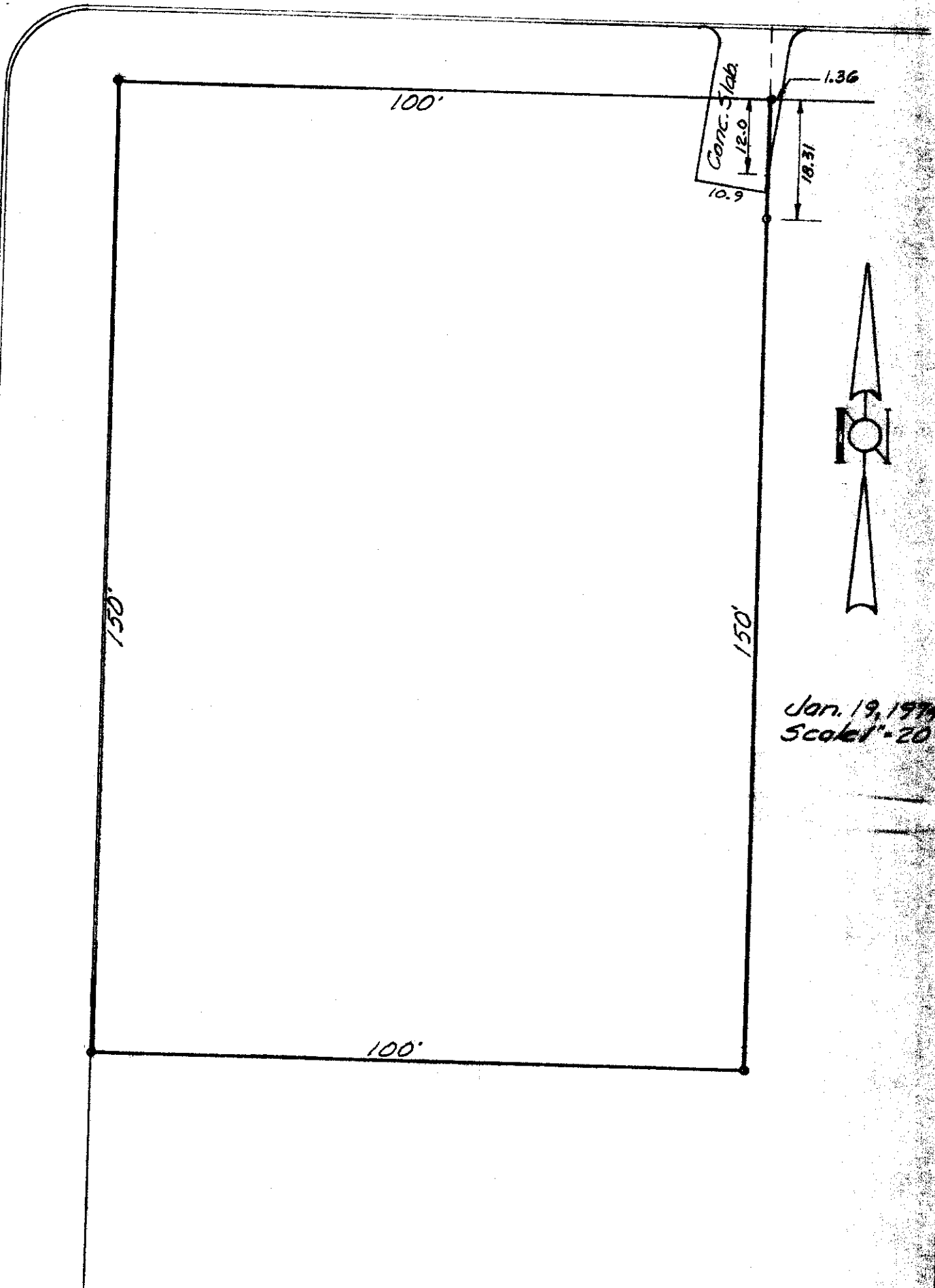


BLUFF AVE. (50')

WYANDOTTE AVE (60')



Jan. 19, 1974
Scale 1" = 20'

PLAT SHOWING SURVEY OF LOT NO. 17, CHESTER HEIGHTS, CITY OF GRANDVIEW HEIGHTS, OHIO.

for

TRINITY UNITED METHODIST CHURCH

Harry L. Greene
Harry L. Greene, Reg. Surveyor No. 4058