

EASTLEFT

DRIVE

16' Pwmt.

84.73'

84'

June 25, 1973
Scale 1" = 20'

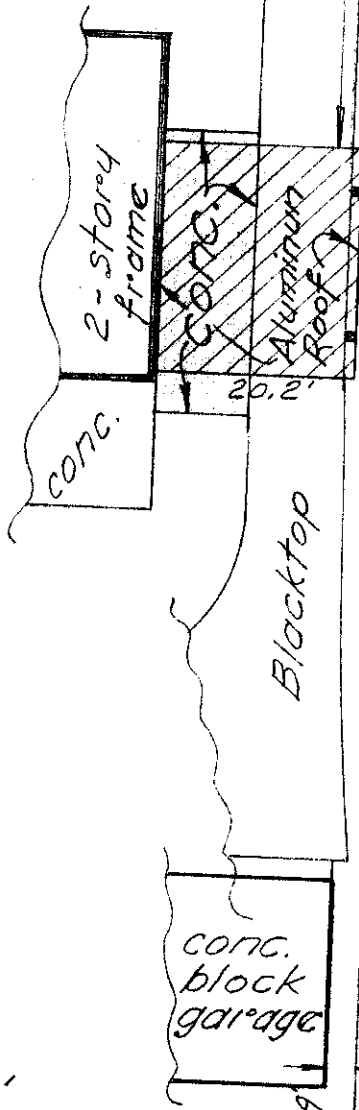
Plat showing bldg. location
east side Lot 71, EAST-LEFT
ON-THE SCIOTO, City of
Upper Arlington, of record
in Plat Book 11, pg. 1-2,
Recorder's Office,
Franklin County, Ohio,
for
Peggy Miller

Drive

102'

LOT 71

LOT 72



3.15'

206'

3.3'

84.26'

84'

Harry L. Greene

Harry L. Greene
Reg. Surveyor 4058