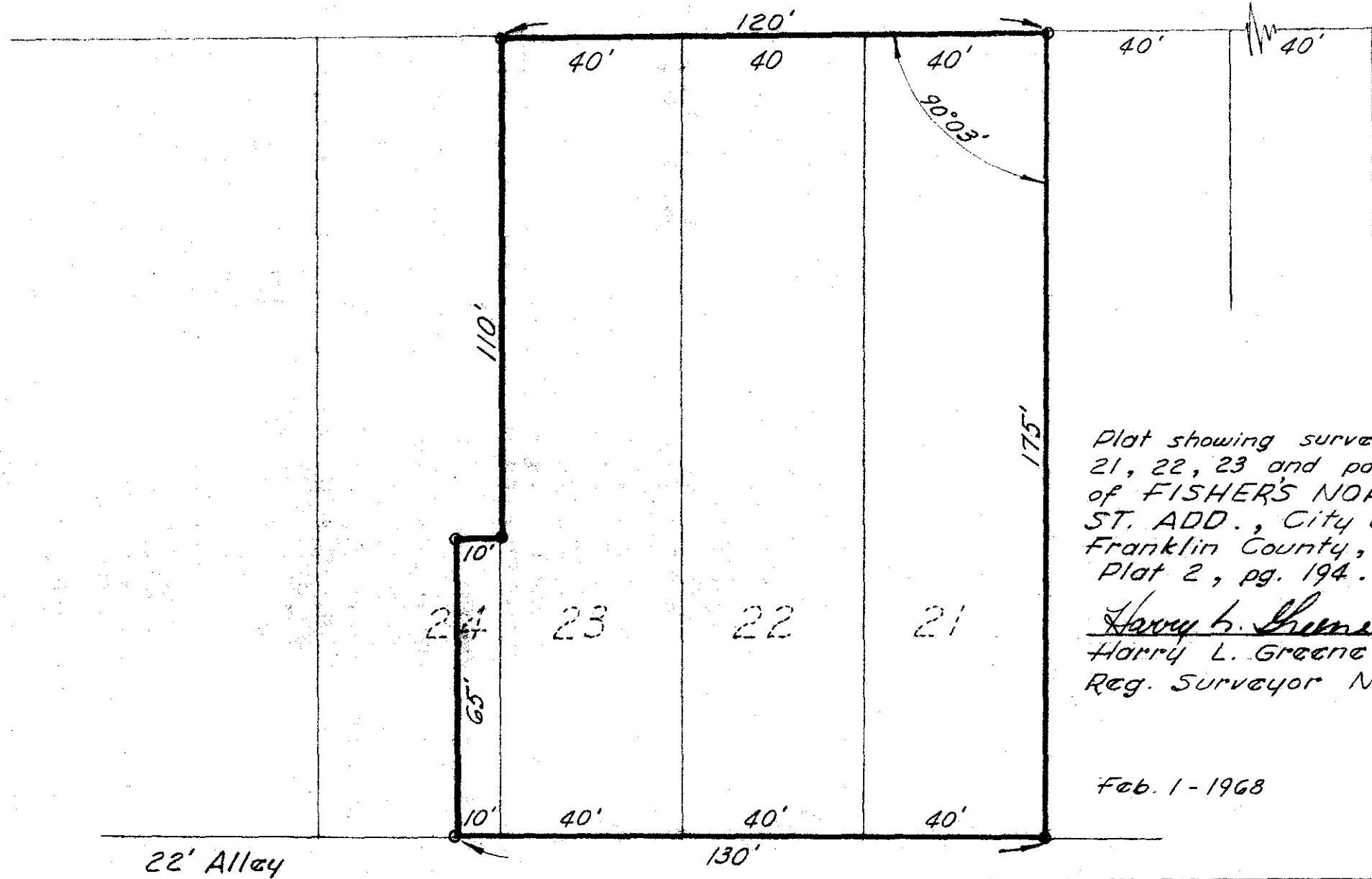
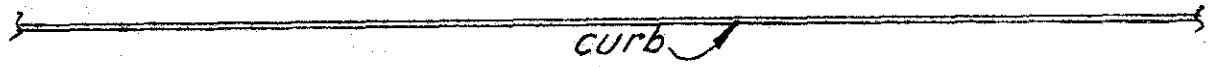


# E. NINTH AVE.



Plat showing survey of Lots  
 21, 22, 23 and part of 24,  
 of FISHER'S NORTH HIGH  
 ST. ADD., City of Columbus,  
 Franklin County, Ohio.  
 Plat 2, pg. 194. (Plat destroyed)

Harry L. Greene  
 Harry L. Greene  
 Reg. Surveyor No. 4058

Feb. 1-1968      Scale 1" = 30'