

MORSE 78'

ROAD

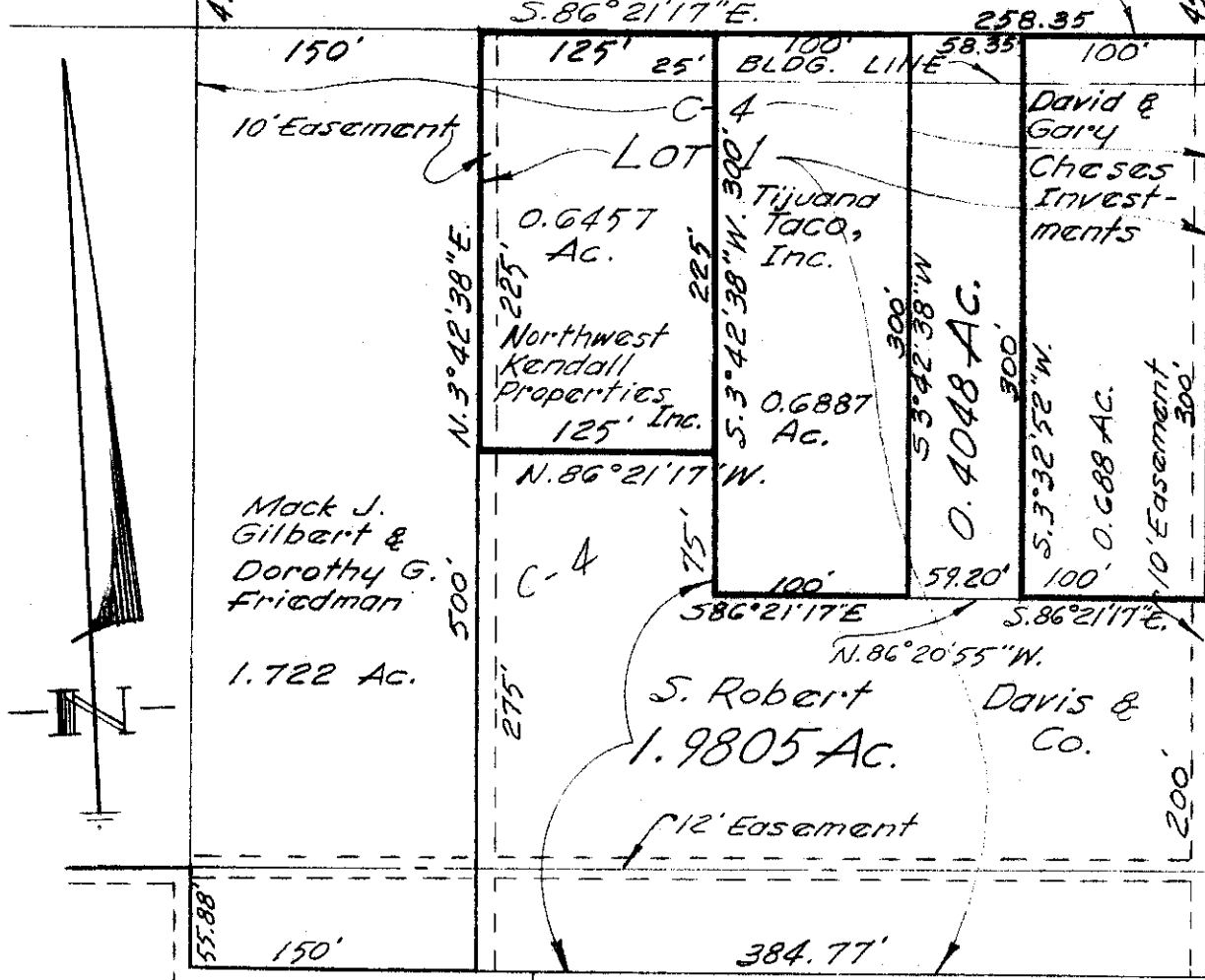
City of Col's. 0.526 Ac.
(for roadway)

old Twp. Line

SERVICE ROAD

S.86°21'17"E. 258.35'

BLDG. LINE



Aug. 13-1969
Scale 1"=100'

National Diversified Corp. 15.884 Ac.

AR-1
LOT 2
Deffet Rentals, Inc.
4.582 Ac.

N. 86° 21' 17" W.
S. Robert Davis & Co.
3.054 Ac.

Plat showing 0.6457 & 0.6887 Ac., City of Columbus, Franklin County, Ohio, being part of LOT No. 1, of the DAVIS MORSE ROAD SUBDIVISION NO. 2, as the same is shown of record in Plat Book 40, Pg. 91, Recorder's Office, Franklin County, Ohio.

Revised May 18, 1970 to show 1.9805 Ac. & 0.4048 Ac. Tracts.

Harry L. Greene
Harry L. Greene, Reg. Surveyor - No. 4058.