

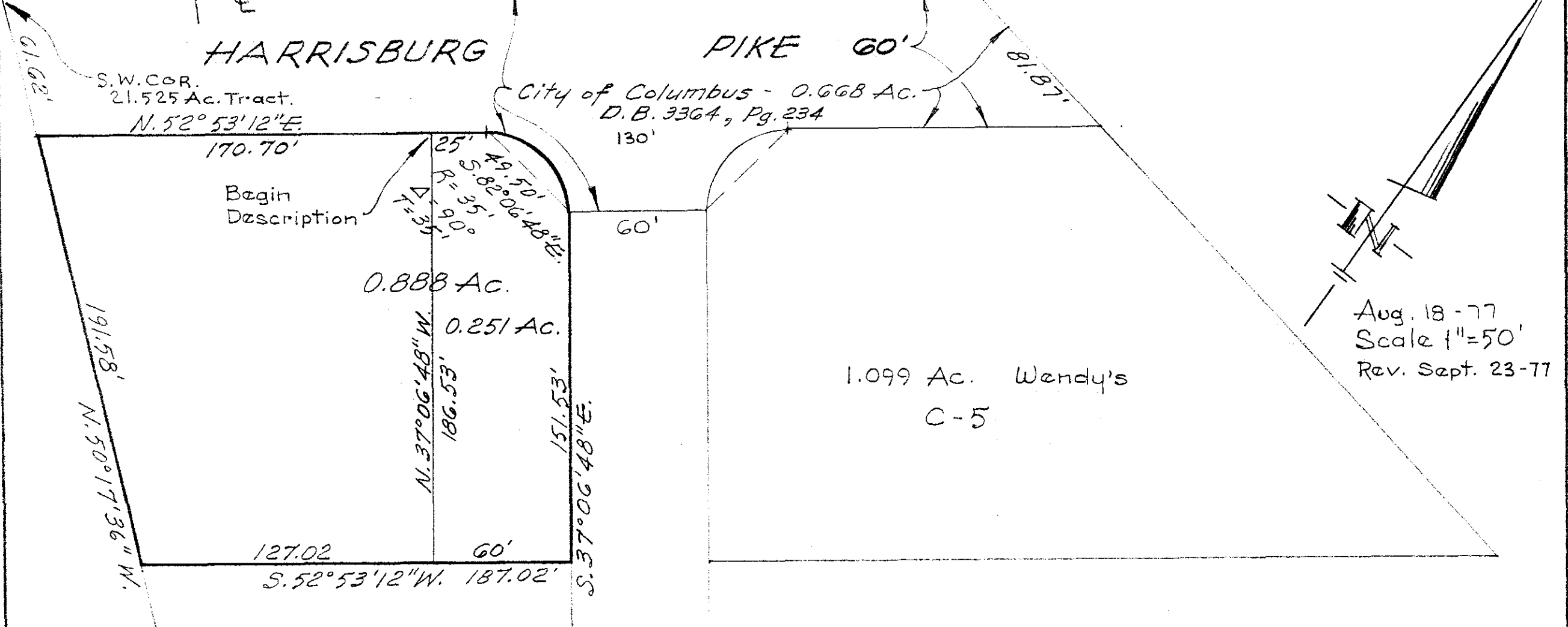
654.18' to E BRIGGS RD.

HARRISBURG

PIKE 60'

S.W. COR.
21.525 Ac. Tract.
N. 52° 53' 12" E.

City of Columbus - 0.668 Ac.
D. B. 3364, Pg. 234



170.70'

Begin Description

0.888 Ac.

0.251 Ac.

1.099 Ac. Wendy's
C-5

Aug. 18-77
Scale 1"=50'
Rev. Sept. 23-77

Plat of 0.251 Ac., City of Columbus, Franklin County, Ohio. V.M.S. No. 717, part of 0.888 Ac., conveyed to S. Robert Davis by deed of record in D.B. 3604 Pg. 876.

Harry L. Greene
Harry L. Greene, Reg. Surveyor - 4058.