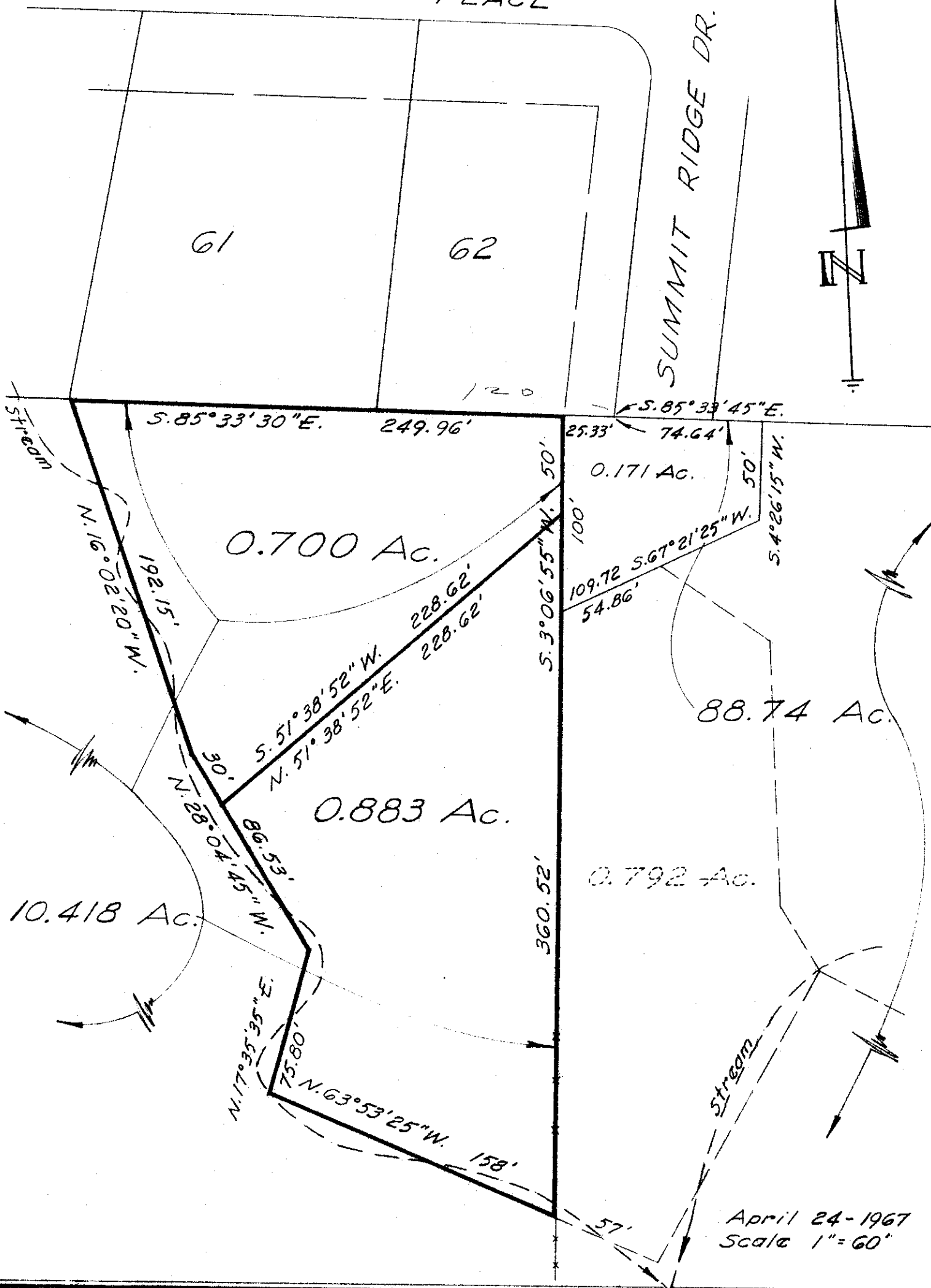


WALDO PLACE



April 24-1967  
Scale 1"=60'

Plat showing a 0.700 Ac. Tract and a 0.883 Ac. Tract, County of Franklin, Township of Perry, Quarter Township 1, Township 1, Range 19, U.S.M. Lands; both being part of the 10.418 Ac. Tract conveyed to Oliver M. and Theresa Z. Tucker by Trustee's Deed of record in Vol. 1811, pg. 623, Recorder's Office, Franklin County, Ohio, including 0.171 Ac. private road area out of 88.74 Ac. Tract.

Harry L. Greene

Harry L. Greene, Reg. Surveyor - No. 4058.