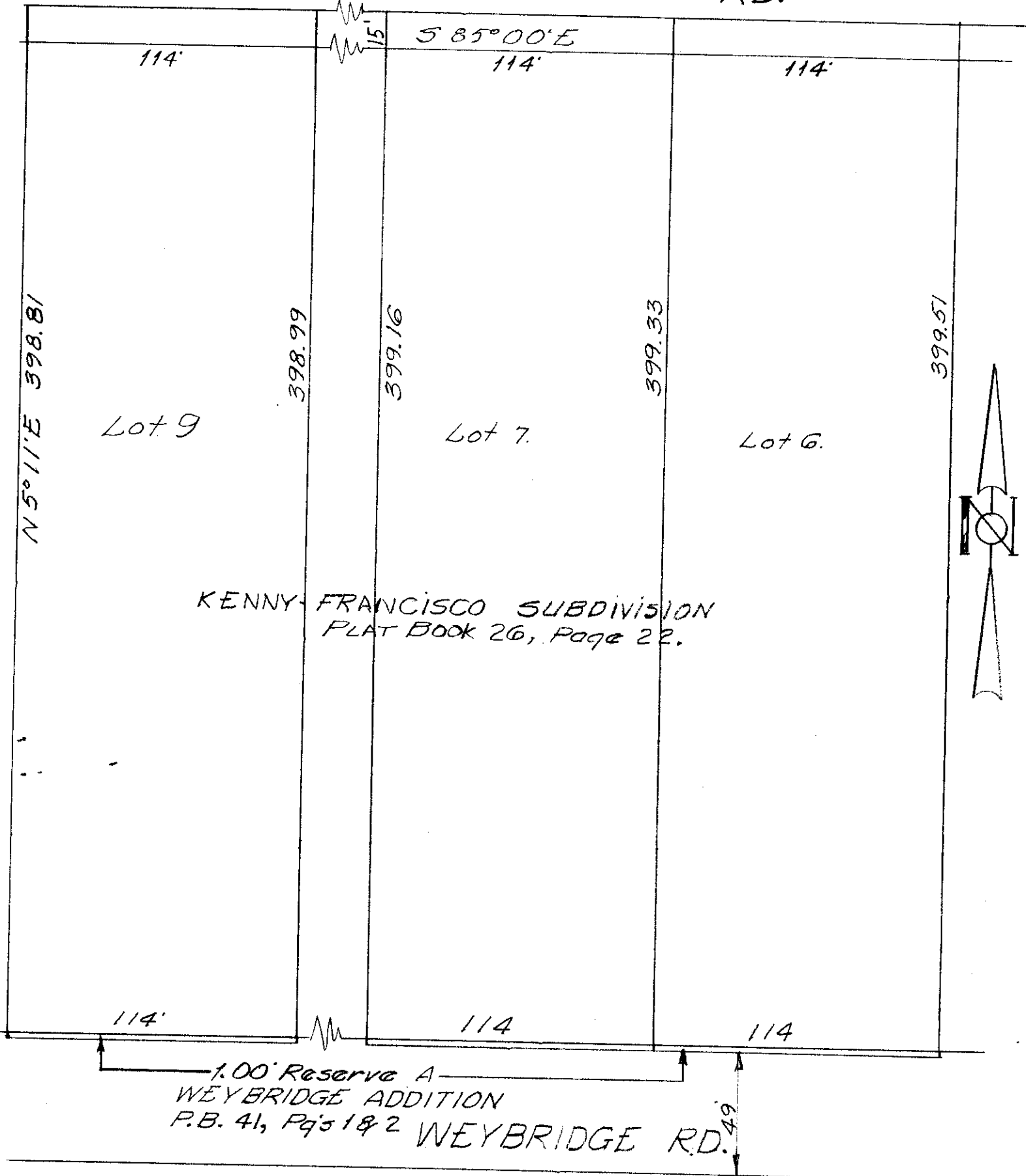


FRANCISCO RD.



April 22, 1977  
Scale 1" = 50'

PLAT SHOWING LOTS 6, 7, AND 9, OF KENNY FRANCISCO SUBDIVISION, OF RECORD IN PLAT BOOK 26, PAGE 22, AND PART OF RESERVE "A" OF WEYBRIDGE ADDITION, OF RECORD IN PLAT BOOK 41, PAGE 1 & 2, ALL OF RECORD IN THE RECORDER'S OFFICE, FRANKLIN COUNTY, OHIO, SITUATED IN THE CITY OF COLUMBUS.

*Harry L. Greene*  
Harry L. Greene, Registered Surveyor, No. 4058.