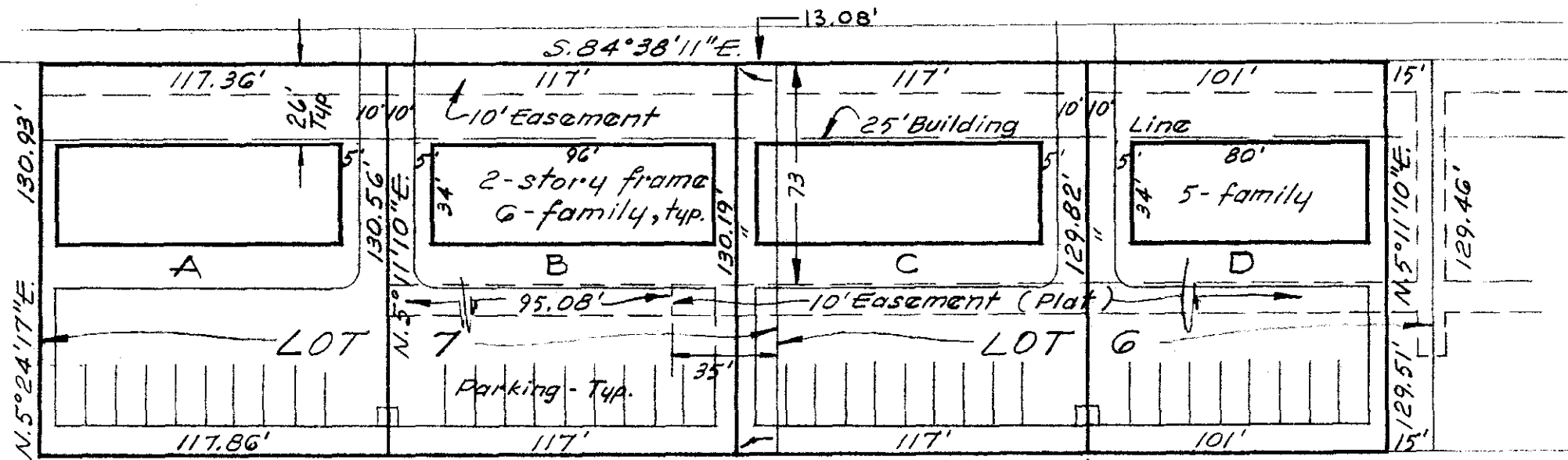


WEYBRIDGE

ROAD 49'

1' Reserve



(10' Driveway Easement both sides of Lot Lines to be included in deeds.)

Feb. 23, 1978
Scale 1" = 50'

Plat showing split of Lot 6 & 7, RESUBDIVISION OF LOTS 1 TO 18 INCLUSIVE WEYBRIDGE ADDITION, City of Columbus, as the same is shown of record in Plat Book 43, Page 19, Recorder's Office, Franklin County, Ohio.

Harry L. Greene
Harry L. Greene, Reg. Surveyor - 4058.