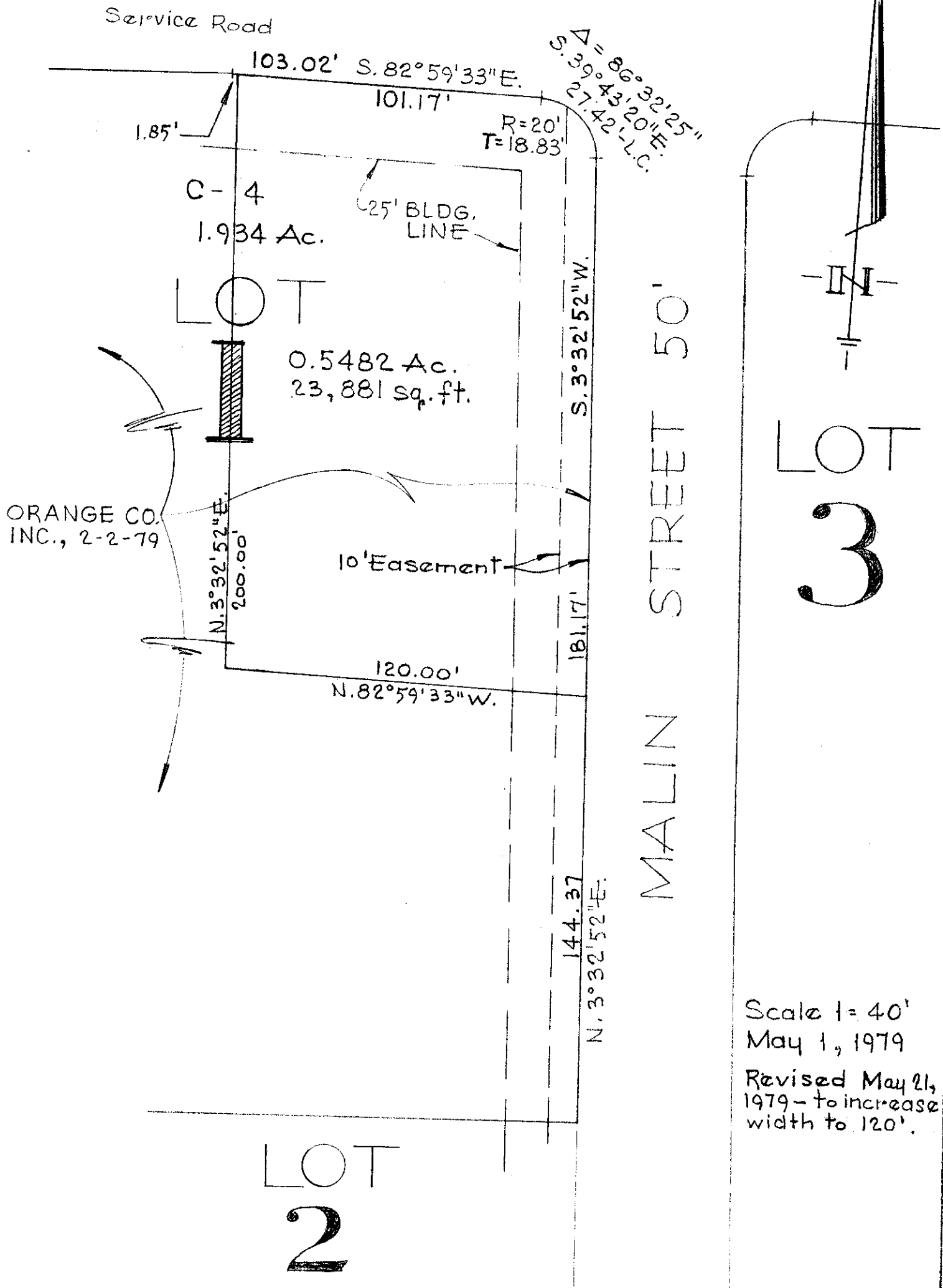


MORSE

ROAD



Scale 1" = 40'
 May 1, 1979
 Revised May 21,
 1979 - to increase
 width to 120'.

Plat showing division of LOT 1 of the NATIONAL DIVERSIFIED CORP. SUBDIVISION, P.B. 43, P. 89, Recorder's Office, Franklin County, Ohio.

Harry L. Greene
 Harry L. Greene, Reg. Surveyor - 4058.