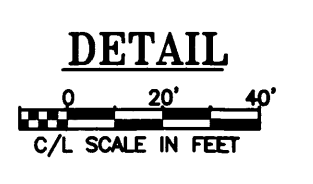
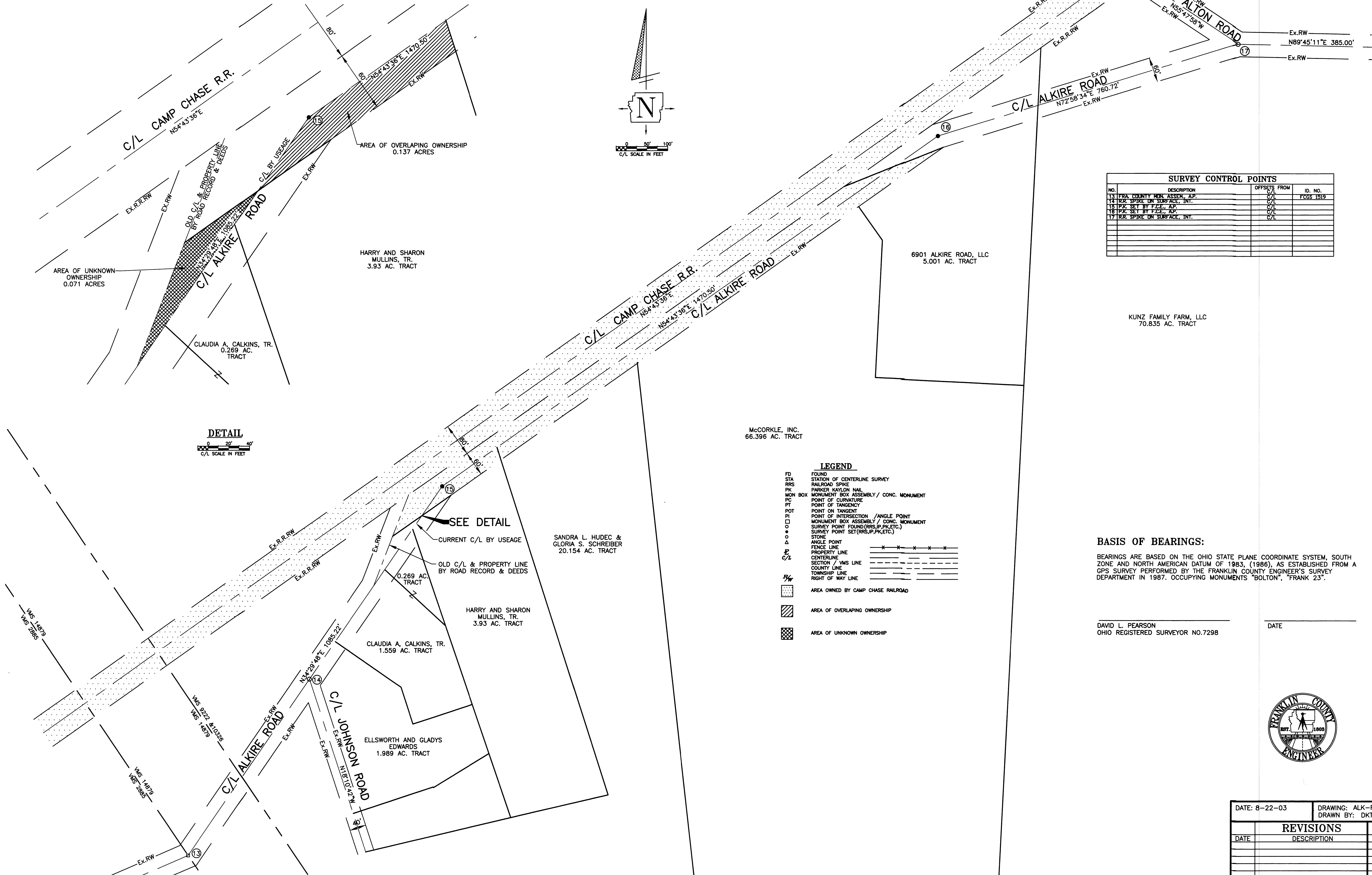
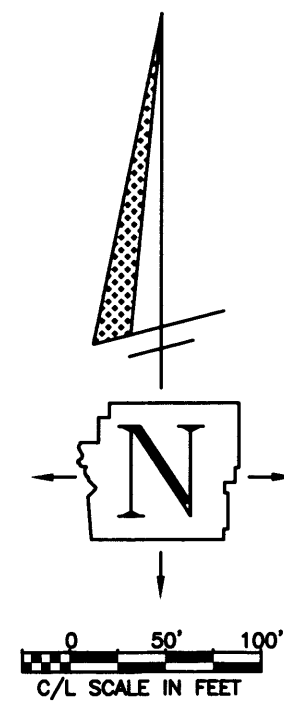


# CENTERLINE SURVEY PLAT

BEING A PART OF VIRIGINA MILITARY SURVEY NO'S. 2885, 14879, & 9222/10326  
PLEASANT AND PRAIRIE TOWNSHIPS, FRANKLIN COUNTY, OHIO



SEE DETAIL

McCORKLE, INC.  
66.396 AC. TRACT

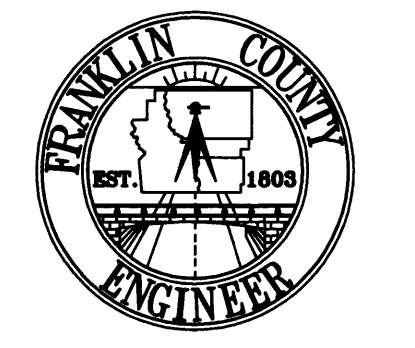
- LEGEND**
- FD FOUND
  - STA STATION OF CENTERLINE SURVEY
  - RRS RAILROAD SPIKE
  - PK PARKER KAYLON NAIL
  - MON BOX MONUMENT BOX ASSEMBLY / CONC. MONUMENT
  - PC POINT OF CURVATURE
  - PT POINT OF TANGENCY
  - POT POINT ON TANGENT
  - PI POINT OF INTERSECTION / ANGLE POINT
  - MON BOX ASSEMBLY / CONC. MONUMENT
  - SURVEY POINT FOUND (RRS, IP, PK, ETC.)
  - SURVEY POINT SET (RRS, IP, PK, ETC.)
  - STONE
  - △ ANGLE POINT
  - FENCE LINE
  - PROPERTY LINE
  - CENTERLINE
  - SECTION / VMS LINE
  - COUNTY LINE
  - TOWNSHIP LINE
  - RIGHT OF WAY LINE
  - ▨ AREA OWNED BY CAMP CHASE RAILROAD
  - ▩ AREA OF OVERLAPPING OWNERSHIP
  - ▧ AREA OF UNKNOWN OWNERSHIP

SURVEY CONTROL POINTS			
NO.	DESCRIPTION	OFFSETS FROM	ID. NO.
13	PRA. COUNTY MON. ASSEMB. A.P.	C/L	FCGS 1519
14	R.R. SPIKE ON SURFACE, INT.	C/L	
15	PK SET BY F.C.E., A.P.	C/L	
16	PK SET BY F.C.E., R.P.	C/L	
17	R.R. SPIKE ON SURFACE, INT.	C/L	

**BASIS OF BEARINGS:**  
BEARINGS ARE BASED ON THE OHIO STATE PLANE COORDINATE SYSTEM, SOUTH ZONE AND NORTH AMERICAN DATUM OF 1983, (1986), AS ESTABLISHED FROM A GPS SURVEY PERFORMED BY THE FRANKLIN COUNTY ENGINEER'S SURVEY DEPARTMENT IN 1987. OCCUPYING MONUMENTS "BOLTON", "FRANK 23".

DAVID L. PEARSON  
OHIO REGISTERED SURVEYOR NO. 7298

DATE \_\_\_\_\_



DATE: 8-22-03		DRAWING: ALK-RR	
		DRAWN BY: DKT	
REVISIONS			
DATE	DESCRIPTION	BY	