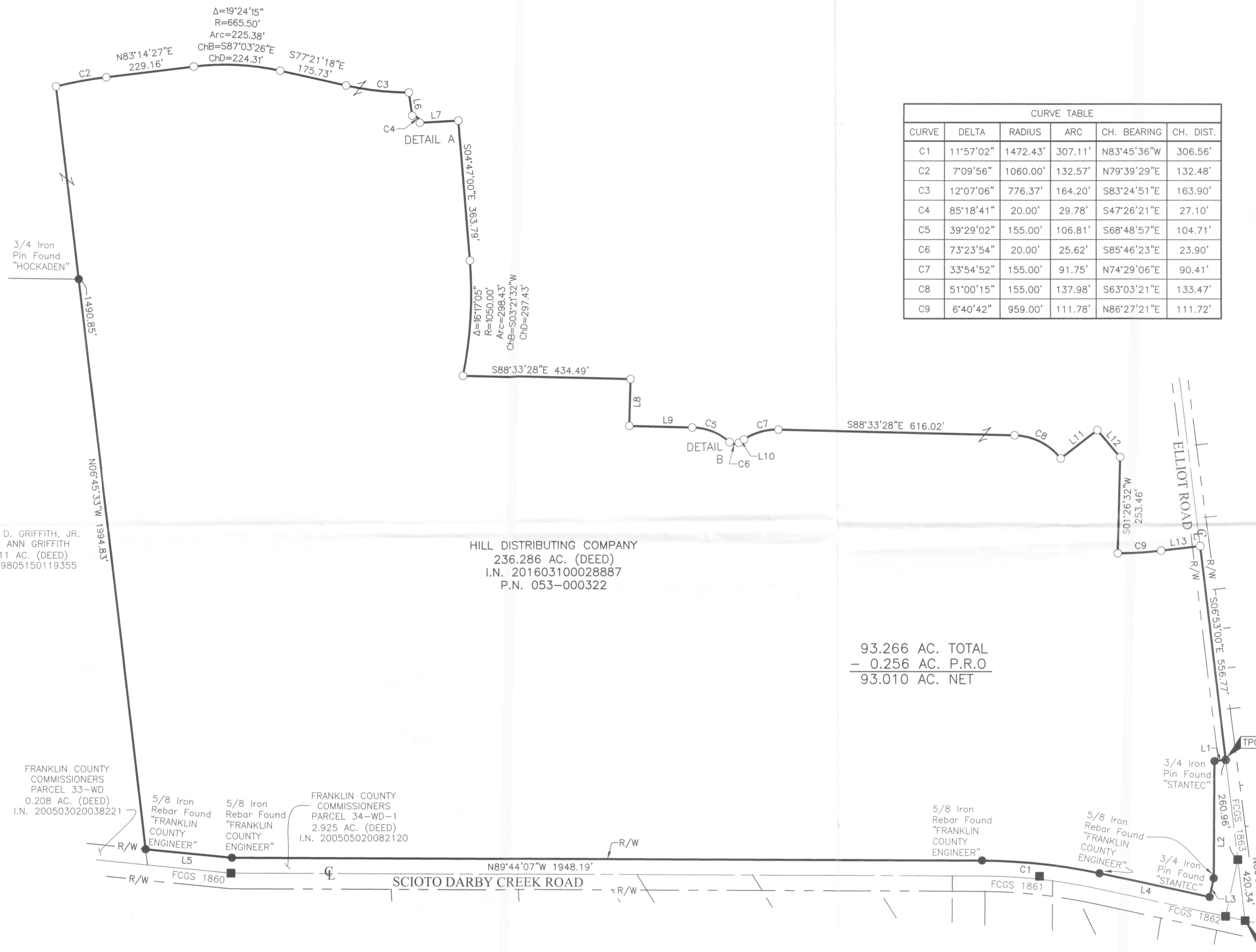


SURVEY OF ACREAGE PARCEL

VIRGINIA MILITARY DISTRICT NUMBER 6640

CITY OF HILLIARD, COUNTY OF FRANKLIN, STATE OF OHIO



| CURVE | DELTA | RADIUS | ARC | CH. BEARING | CH. DIST. |
|-------|-----------|----------|---------|-------------|-----------|
| C1 | 11°57'02" | 1472.43' | 307.11' | N83°45'36"W | 306.56' |
| C2 | 7°09'56" | 1060.00' | 132.57' | N79°39'29"E | 132.48' |
| C3 | 12°07'06" | 776.37' | 164.20' | S83°24'51"E | 163.90' |
| C4 | 85°18'41" | 20.00' | 29.78' | S47°26'21"E | 27.10' |
| C5 | 39°29'02" | 155.00' | 106.81' | S68°48'57"E | 104.71' |
| C6 | 73°23'54" | 20.00' | 25.62' | S85°46'23"E | 23.90' |
| C7 | 33°54'52" | 155.00' | 91.75' | N74°29'06"E | 90.41' |
| C8 | 51°00'15" | 155.00' | 137.98' | S63°03'21"E | 133.47' |
| C9 | 6°40'42" | 959.00' | 111.78' | N86°27'21"E | 111.72' |

| LINE | BEARING | DISTANCE |
|------|-------------|----------|
| L1 | S83°07'00"W | 30.00' |
| L2 | S00°19'35"W | 303.58' |
| L3 | S12°01'52"W | 50.32' |
| L4 | N77°47'05"W | 291.42' |
| L5 | N84°23'11"W | 224.89' |
| L6 | S08°04'45"E | 60.63' |
| L7 | N86°51'29"E | 100.04' |
| L8 | S01°26'32"W | 120.00' |
| L9 | S88°33'28"E | 163.08' |
| L10 | N57°31'40"E | 18.21' |
| L11 | N52°26'47"E | 120.32' |
| L12 | S40°18'00"E | 91.66' |
| L13 | N83°07'00"E | 101.94' |

HILL DISTRIBUTING COMPANY
236.286 AC. (DEED)
I.N. 201603100028887
P.N. 053-000322

SIDNEY D. GRIFFITH, JR.
LEIGH ANN GRIFFITH
47.211 AC. (DEED)
I.N. 199805150119355

93.266 AC. TOTAL
- 0.256 AC. P.R.O
93.010 AC. NET

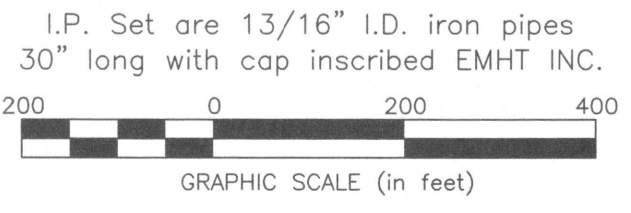
FRANKLIN COUNTY COMMISSIONERS
PARCEL 33-WD
0.208 AC. (DEED)
I.N. 200503020038221

FRANKLIN COUNTY COMMISSIONERS
PARCEL 34-WD-1
2.925 AC. (DEED)
I.N. 200505020082120



By Matthew A. Kirk Date 4 Nov 21
Matthew A. Kirk
Professional Surveyor No. 7865
mkirk@emht.com

- = STONE FND.
- = MON. FND.
- = I.P. FND.
- = I.P. SET
- = MAG. NAIL FND.
- = MAG. NAIL SET
- ▲ = R.R. SPK. FND.
- ◆ = P.K. NAIL FND.



BASIS OF BEARING:
The bearings shown hereon are based on the Ohio State Plane Coordinate System South Zone, NAD83 (2011). Control for bearings was from coordinates of monuments 6645 and 6662 RESET, as established by the Franklin County Engineering Department using Global Positioning System procedures and equipment. The bearing of North 86° 44' 07" West, assigned to the northerly right of way line of Scioto Darby Creek Road, is designated the basis of bearings for this survey.

SURVEY NOTE:
This survey was prepared using documents of record, prior plats of survey, and observed evidence located by an actual field survey.

| | | |
|--|------------------------|-------------|
| <p>Evans, Mechwart, Hambleton & Tilton, Inc. Engineers • Surveyors • Planners • Scientists 5500 New Albany Road, Columbus, OH 43054 Phone: 614.775.4500 Toll Free: 888.775.3648 emht.com</p> | Date: November 4, 2021 | |
| | Scale: 1" = 200' | |
| | Job No: 2021-0090 | |
| | Sheet: 1 of 1 | |
| REVISIONS | | |
| MARK | DATE | DESCRIPTION |
| | | |
| | | |
| | | |
| | | |