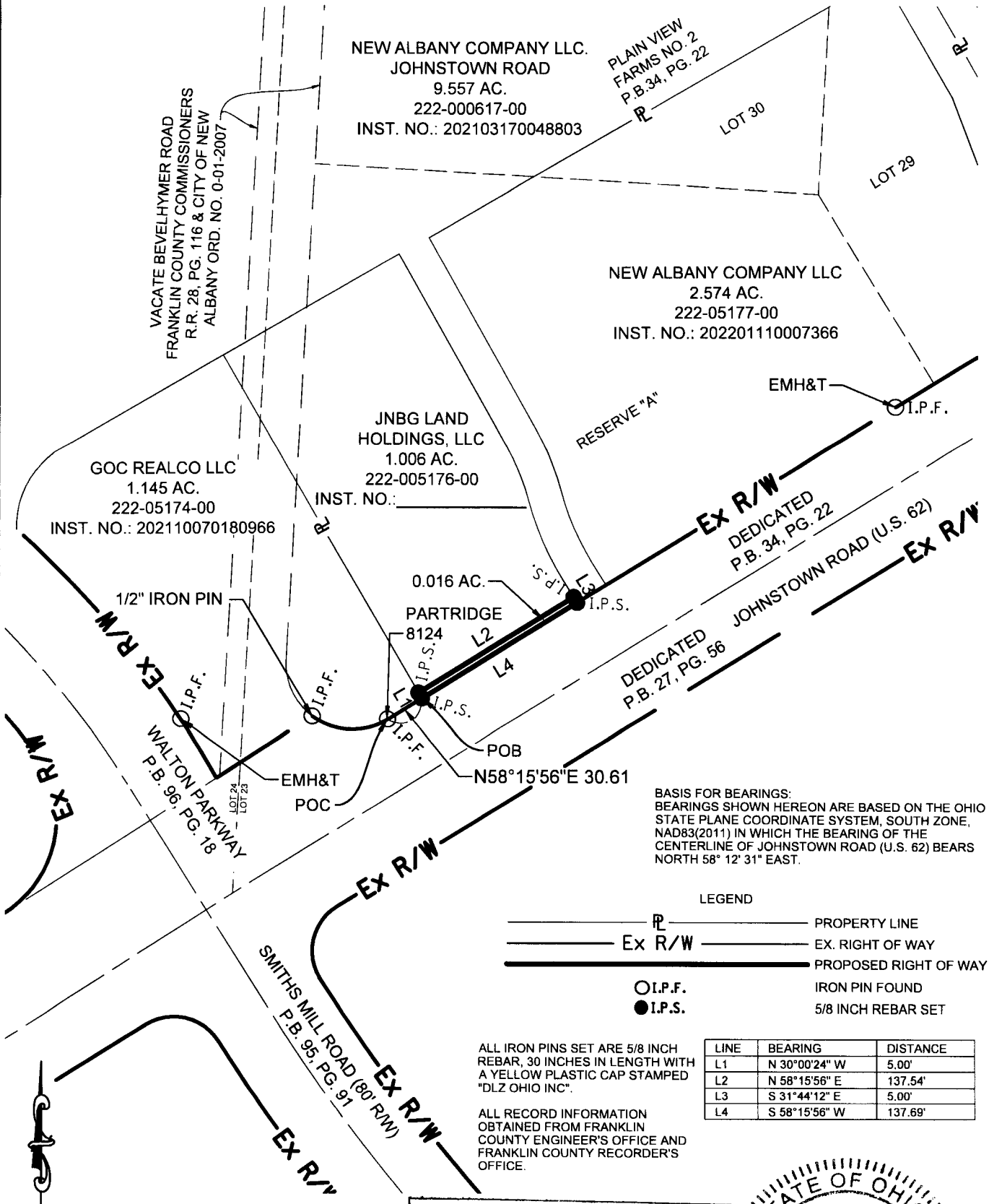




6121 Huntley Road - Columbus, Ohio 43229-1003
Ph.: (614) 888-0040 Fax: (614) 848-6712

RIGHT-OF-WAY DEDICATION
THE CITY OF NEW ALBANY,
FRANKLIN COUNTY, OHIO
LOT 23, QUARTER TOWNSHIP 1, TOWNSHIP 2, RANGE 16
UNITED STATES MILITARY LANDS
PART OF RESERVE A OF
PLAIN VIEW FARMS NO. 2
P.B. 34, PG. 22



BASIS FOR BEARINGS:
BEARINGS SHOWN HEREON ARE BASED ON THE OHIO STATE PLANE COORDINATE SYSTEM, SOUTH ZONE, NAD83(2011) IN WHICH THE BEARING OF THE CENTERLINE OF JOHNSTOWN ROAD (U.S. 62) BEARS NORTH 58° 12' 31" EAST.

LEGEND

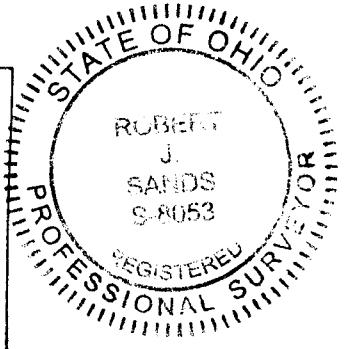
- P — PROPERTY LINE
- Ex R/W — EX. RIGHT OF WAY
- PROPOSED RIGHT OF WAY
- I.P.F. IRON PIN FOUND
- I.P.S. 5/8 INCH REBAR SET

ALL IRON PINS SET ARE 5/8 INCH REBAR, 30 INCHES IN LENGTH WITH A YELLOW PLASTIC CAP STAMPED "DLZ OHIO INC".

ALL RECORD INFORMATION OBTAINED FROM FRANKLIN COUNTY ENGINEER'S OFFICE AND FRANKLIN COUNTY RECORDER'S OFFICE.

LINE	BEARING	DISTANCE
L1	N 30°00'24" W	5.00'
L2	N 58°15'56" E	137.54'
L3	S 31°44'12" E	5.00'
L4	S 58°15'56" W	137.69'

RECEIVED
FEB 15 2022
Franklin County Engineer
Cornell R. Robertson, P.E., P.S.



CERTIFICATION:
I HEREBY CERTIFY THAT THIS SURVEY SHOWN ON THE ATTACHED PLAT WAS PREPARED FROM AN ON THE GROUND SURVEY IN AUGUST, 2021 UNDER MY DIRECT SUPERVISION AND THAT IT AND THE INFORMATION, COURSES AND DISTANCES ARE CORRECT TO THE BEST OF MY KNOWLEDGE.

