

C-5-F



Evans, Mechwart, Hambleton & Tillon, Inc.  
 Engineers • Surveyors • Planners • Scientists  
 5500 New Albany Road, Columbus, OH 43054  
 Phone: 614.775.4500 Toll Free: 888.775.3648  
 emht.com

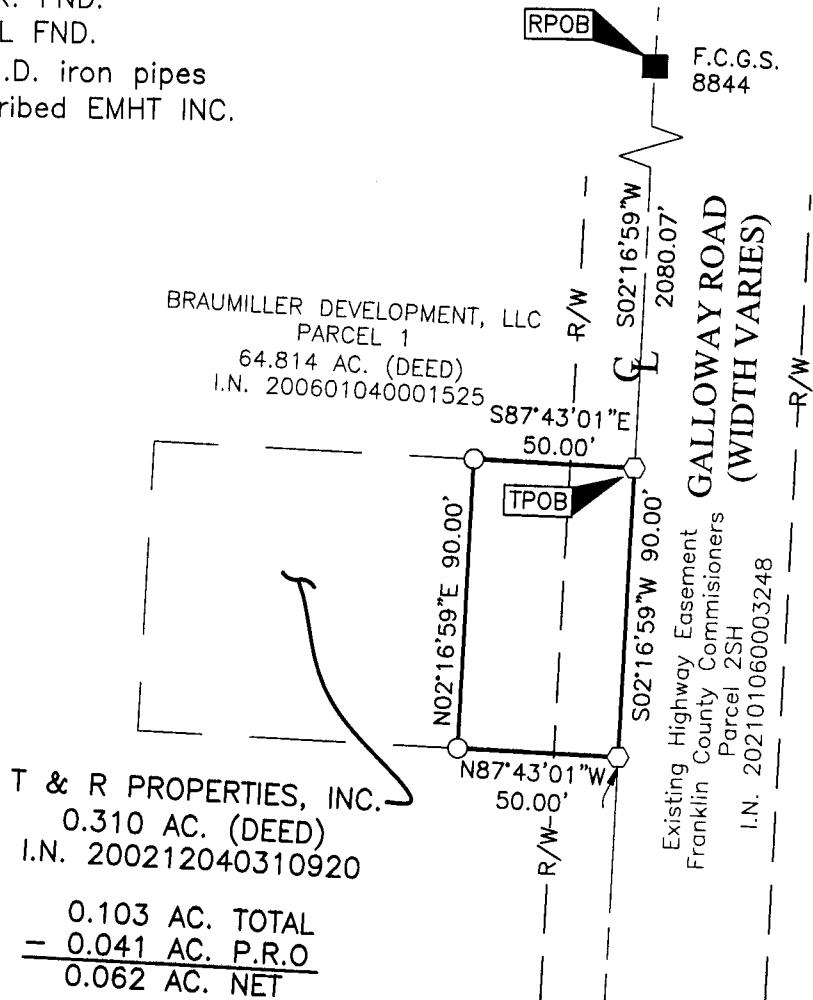
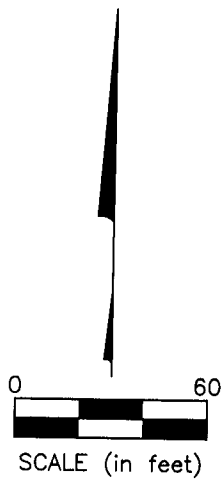
**SURVEY OF ACREAGE PARCEL**  
 VIRGINIA MILITARY SURVEY NUMBER 1473  
 TOWNSHIP OF PRAIRIE, COUNTY OF FRANKLIN, STATE OF OHIO

Date: January 26, 2022 Scale: 1" = 60' Job No: 2021-0721 Sheet No: 1 of 1

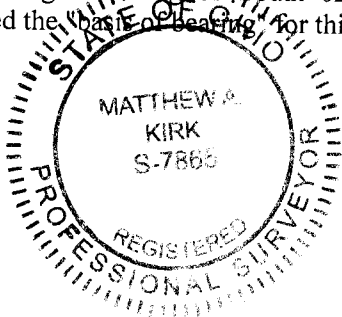
- = STONE FND.
- = MON. FND.
- = I.P. FND.
- = I.P. SET
- ◆ = MAG. NAIL FND.
- ◇ = MAG. NAIL SET
- ▲ = R.R. SPK. FND.
- ◆ = P.K. NAIL FND.

I.P. Set are 13/16" I.D. iron pipes  
 30" long with cap inscribed EMHT INC.

**SURVEY NOTE:**  
 This survey was prepared using documents of record,  
 prior plats of survey, and observed evidence located  
 by an actual field survey.



**BASIS OF BEARINGS:** The bearings shown hereon are based the Ohio State Plane Coordinate System, South Zone, NAD 83 (2007). Said bearings originated from a field traverse which was tied (referenced) to said coordinate system by GPS observations of Franklin County Engineering Department monuments FCGS 0080 and FCGS 8873. The portion of the centerline of Galloway Road, having a bearing of South 02° 16' 59" West, is designated the "Basis of Bearing" for this survey.



By Matthew A Kirk  
 Matthew A. Kirk  
 Professional Surveyor No. 7865  
 mkirk@emht.com

26 JAN 22  
 Date

**RECEIVED**  
 FEB 09 2022  
 Franklin County Engineer  
 Cornell R. Robertson, P.E., P.S.

J:\20210721\DWG\04SHEETS\BOUNDARY\20210721-VS-BNDY-02.DWG plotted by KIRK, MATTHEW on 1/26/2022 1:09:19 PM last saved by TCOFFMAN on 1/26/2022 12:16:42 PM