

C-5-F



Evans, Mechwart, Hambleton & Tilton, Inc.
 Engineers • Surveyors • Planners • Scientists
 5500 New Albany Road, Columbus, OH 43054
 Phone: 614.775.4500 Toll Free: 888.775.3648
 emht.com

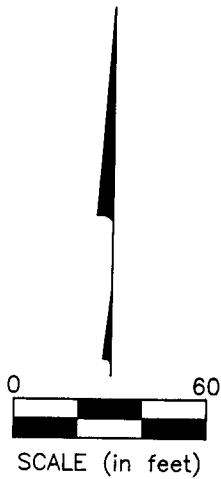
SURVEY OF ACREAGE PARCEL
 VIRGINIA MILITARY SURVEY NUMBER 1473
 TOWNSHIP OF PRAIRIE, COUNTY OF FRANKLIN, STATE OF OHIO

Date: January 26, 2022 Scale: 1" = 60' Job No: 2021-0721 Sheet No: 1 of 1

- = STONE FND.
- = MON. FND.
- = I.P. FND.
- = I.P. SET
- = MAG. NAIL FND.
- = MAG. NAIL SET
- ▲ = R.R. SPK. FND.
- = P.K. NAIL FND.

SURVEY NOTE:
 This survey was prepared using documents of record, prior plats of survey, and observed evidence located by an actual field survey.

I.P. Set are 13/16" I.D. iron pipes 30" long with cap inscribed EMHT INC.



LINE TABLE		
LINE	BEARING	DISTANCE
L1	N87°43'01"W	50.00'
L2	S86°04'34"E	50.02'

BASIS OF BEARINGS: The bearings shown hereon are based the Ohio State Plane Coordinate System, South Zone, NAD 83 (2007). Said bearings originated from a field traverse which was tied (referenced) to said coordinate system by GPS observations of Franklin County Engineering Department monuments FCGS 0080 and FCGS 8873. The portion of the centerline of Galloway Road, having a bearing of South 02° 16' 59" West, is designated the "basis of bearing" for this survey.

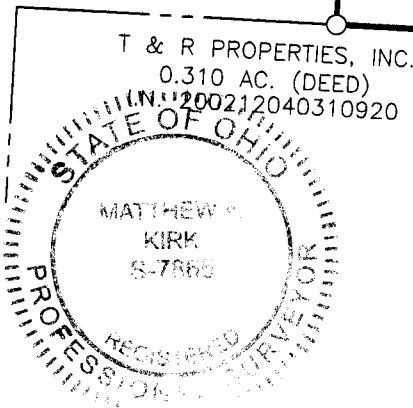
THE BOARD OF TRUSTEES OF PRAIRIE TOWNSHIP (FRANKLIN COUNTY)
 111.733 AC. (DEED)
 I.N. 201304080056970

0.287 AC. TOTAL
 - 0.115 AC. P.R.O.
 0.172 AC. NET

BRAUMILLER DEVELOPMENT, LLC
 PARCEL 1
 64.814 AC. (DEED)
 I.N. 200601040001525

Existing Highway Easement
 Franklin County Commissioners
 Parcel 2SH
 I.N. 202101060003248

GALLOWAY ROAD (WIDTH VARIES)



RPOB FCGS 8844

TPOB

L1
 S02°16'59"W
 1736.22'

R/W
 S02°16'59"W
 249.64'

R/W
 S02°16'59"W
 1830.43'

L2

R/W

R/W

R/W

R/W

R/W

R/W

R/W

R/W

R/W

R/W

R/W

R/W

R/W

R/W

R/W

R/W

R/W

R/W

R/W

R/W

R/W

R/W

R/W

R/W

R/W

R/W

FCGS 0080

RECEIVED

FEB 09 2022

Franklin County Engineer
 Cornell R. Robertson, P.E., P.S.

By Matthew A. Kirk
 Matthew A. Kirk
 Professional Surveyor No. 7865
 mkirk@emht.com

26 JAN 22
 Date

J:\20210721\DWG\04SHEETS\BOUNDARY\20210721-VS-BNDY-01.DWG plotted by KIRK, MATTHEW on 1/26/2022 1:01:05 PM last saved by TCOFFMAN on 1/26/2022 12:20:29 PM