

C-5-F



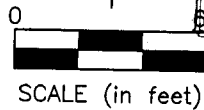
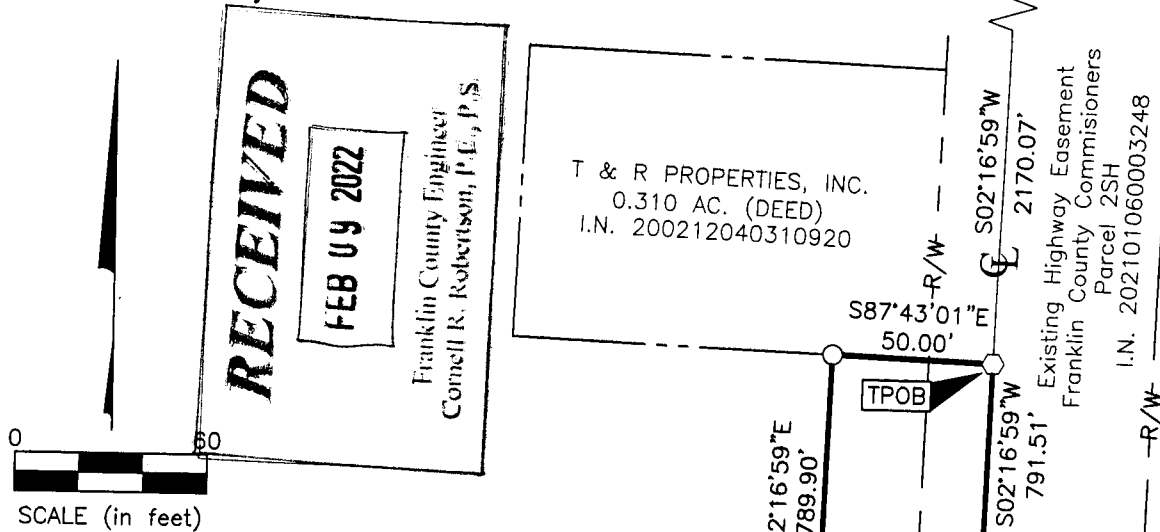
Evans, Mechwart, Hambleton & Tilton, Inc.
 Engineers • Surveyors • Planners • Scientists
 5500 New Albany Road, Columbus, OH 43054
 Phone: 614.775.4500 Toll Free: 866.775.3648
 emht.com

SURVEY OF ACREAGE PARCEL
 VIRGINIA MILITARY SURVEY NUMBER 1473
 TOWNSHIP OF PRAIRIE, COUNTY OF FRANKLIN, STATE OF OHIO

Date: January 26, 2022 Scale: 1" = 60' Job No: 2021-0721 Sheet No: 1 of 1

SURVEY NOTE:

This survey was prepared using documents of record, prior plats of survey, and observed evidence located by an actual field survey.



BRAUMILLER DEVELOPMENT, LLC
 64.814 AC. (DEED)
 I.N. 200601040001525

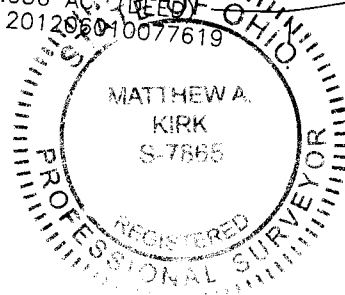
0.908 AC. TOTAL
 - 0.363 AC. P.R.O
 0.545 AC. NET

- = STONE FND.
- = MON. FND.
- = I.P. FND.
- = I.P. SET
- ◆ = MAG. NAIL FND.
- = MAG. NAIL SET
- ▲ = R.R. SPK. FND.
- ◆ = P.K. NAIL FND.

I.P. Set are 13/16" I.D. iron pipes
 30" long with cap inscribed EMHT INC.

CITY OF COLUMBUS, OHIO
 22.316 AC. (DEED)
 I.N. 201206010077623

COUNTY OF FRANKLIN, OHIO
 1.056 AC. (DEED)
 I.N. 201206010077619



BASIS OF BEARINGS: The bearings shown hereon are based the Ohio State Plane Coordinate System, South Zone, NAD 83 (2007). Said bearings originated from a field traverse which was tied (referenced) to said coordinate system by GPS observations of Franklin County Engineering Department monuments FCGS 0080 and FCGS 8873. The portion of the centerline of Galloway Road, having a bearing of South 02° 16' 59" West, is designated the "basis of bearing" for this survey.

By Matthew A. Kirk Date 26 JAN 22
 Matthew A. Kirk
 Professional Surveyor No. 7865
 mkirk@emht.com

J:\20210721\DWG\04SHEETS\BOUNDARY\20210721-VS-BNDY-03.DWG plotted by KIRK, MATTHEW on 1/26/2022 1:13:51 PM last saved by TCOFFMAN on 1/26/2022 12:15:01 PM