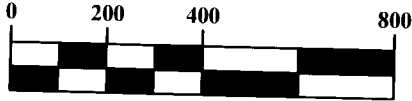


**GRAPHIC SCALE**

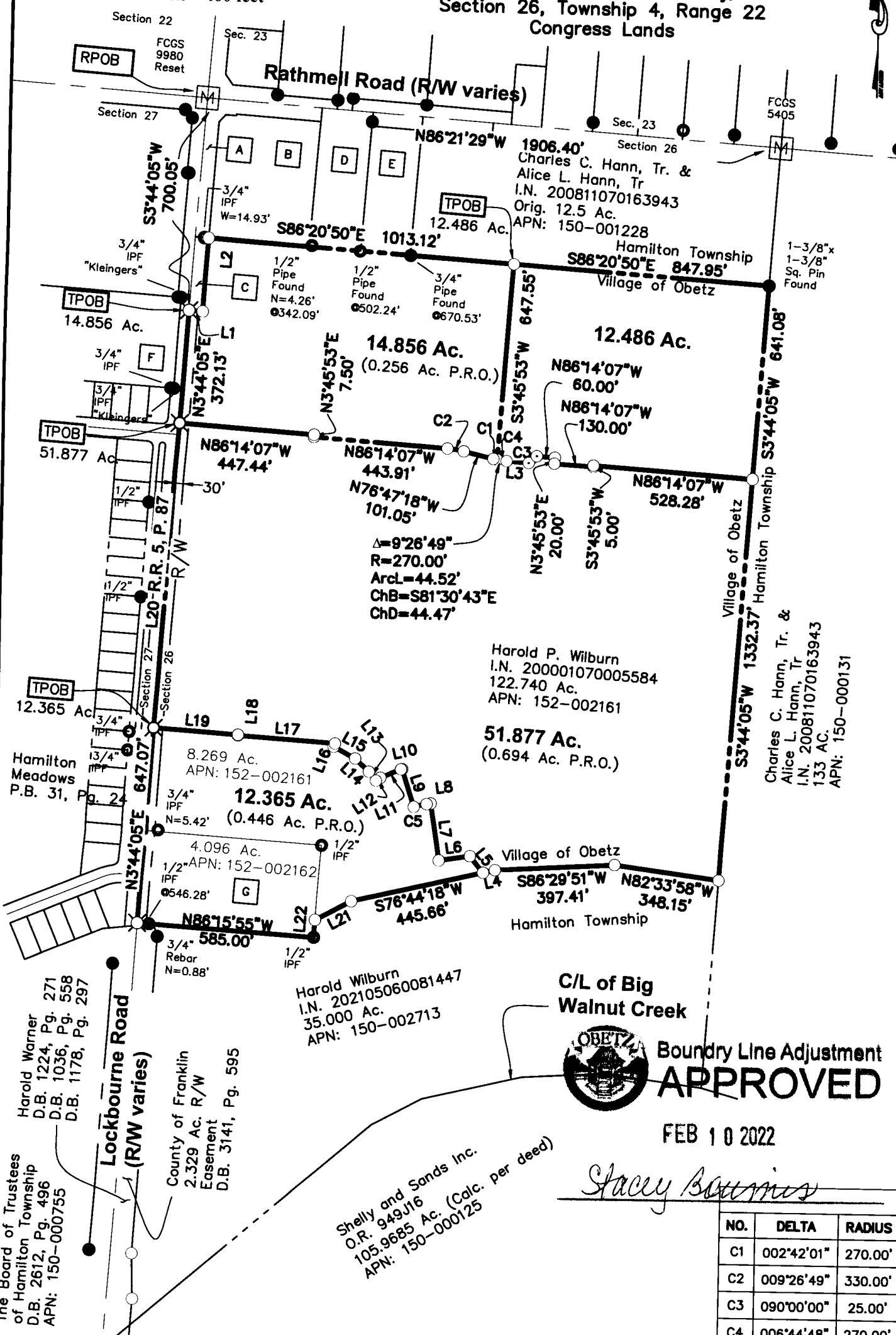


1 inch = 400 feet

**Parcel Exhibit**  
 14.856 Ac., 12.486 Ac.,  
 51.877 Ac. & 12.365 Ac.

Village of Obetz, Franklin County, Ohio  
 Section 26, Township 4, Range 22  
 Congress Lands

- A** Franklin County Commissioners  
 I.N. 200108280198632  
 Parcel No. 7-WD  
 0.831 Ac.
- B** R&R Petroleum LLC  
 I.N. 202108170145991  
 3.154 Ac. (Calc. per deed)  
 APN: 150-000108
- C** Franklin County Commissioners  
 200203220073796  
 Parcel No. 10-WD  
 0.251 Ac.
- D** Steven L. & Rebecca J. Baughman  
 O.R. 13481E02  
 1.783 Ac.  
 APN: 150-000698
- E** Russel R. & Diane R. Solomon  
 O.R. 196106  
 Orig. 1.733 Ac.  
 APN: 150-000361
- F** Board of Education of the Hamilton Local School District  
 D.B. 2189, Pg. 630  
 Orig. 9.095 Ac.  
 APN: 152-001742
- G** Harold P. Wilburn & Judith A. Wilburn  
 O.R. 14059I10  
 4.096 Ac.  
 APN: 152-002162



**LINE TABLE**

LINE	BEARING	DISTANCE
L1	S86°15'59"E	45.00'
L2	N03°44'01"E	243.06'
L3	N86°14'07"W	73.28'
L4	S76°44'18"W	40.26'
L5	N39°44'40"W	70.05'
L6	S81°00'27"W	104.00'
L7	N08°59'33"W	190.00'
L8	S81°00'27"W	13.53'
L9	N17°54'39"W	131.25'
L10	S76°32'36"W	4.16'
L11	S66°27'41"W	73.80'
L12	S55°58'17"W	17.57'
L13	N38°59'33"W	37.79'
L14	N46°59'44"W	63.14'
L15	N62°13'38"W	80.77'
L16	N20°32'41"E	11.30'
L17	N86°14'07"W	322.37'
L18	N03°45'53"E	2.00'
L19	N86°14'07"W	280.27'
L20	N03°44'05"E	1007.64'
L21	S61°54'23"W	135.00'
L22	S03°44'05"W	58.28'

**CURVE TABLE**

NO.	DELTA	RADIUS	LENGTH	CHORD BEARING	CHORD DIST.
C1	002°42'01"	270.00'	12.72'	N78°08'18"W	12.72'
C2	009°26'49"	330.00'	54.41'	N81°30'43"W	54.35'
C3	090°00'00"	25.00'	39.27'	S48°45'53"W	35.36'
C4	006°44'48"	270.00'	31.79'	N82°51'43"W	31.77'
C5	008°55'58"	280.00'	43.65'	S76°32'28"W	43.61'

**BOUNDARY LINE ADJUSTMENT APPROVED**  
 FEB 10 2022  
*Stacey Baunies*

**PRELIMINARY APPROVAL**  
 Cornell R. Robertson P.E. P.S.  
 BY: gantonini 01/19/2022  
**PENDING ORIGINALS**  
 \*Submitted via digital format  
 Please return this approval, along with the original description and plat of survey, as prepared by the surveyor, signed, sealed and dated in blue ink.

- Legend**
- Iron Rod Found
  - Iron Pipe Found
  - ✕ PK Nail Found
  - Ⓜ Mon. Box Found
  - Iron Pin Set
  - ✕ PK Nail Set

DRAWN BY: BCK      JOB NO.: 21-0001-1270  
 DATE: 01-18-22      CHECKED BY: DRB

**ADVANCED CIVIL DESIGN ENGINEERS SURVEYORS**  
 781 Science Boulevard  
 Gahanna, Ohio 43230  
 ph 614.428.7750  
 fax 614.428.7755

This exhibit is based on information obtained from the Franklin County Auditor's and Recorder's Office and information obtained from an actual field survey conducted in April of 2021.

All iron pins set are 5/8" diameter rebar, 30" long with a plastic cap inscribed "Advanced 7661".

The basis of bearings used for this exhibit are based on the NAD83 Ohio State Plane Coordinate System, South Zone (NSRS 2007) which determines the bearing for the centerline Rathmell Road between FCGS 9980 Reset and FCGS 5405 to be N86°21'29"W.

**ADVANCED CIVIL DESIGN, INC.**  
 Douglas R. Hock, P.S. 7661  
 Date: 1/19/22

