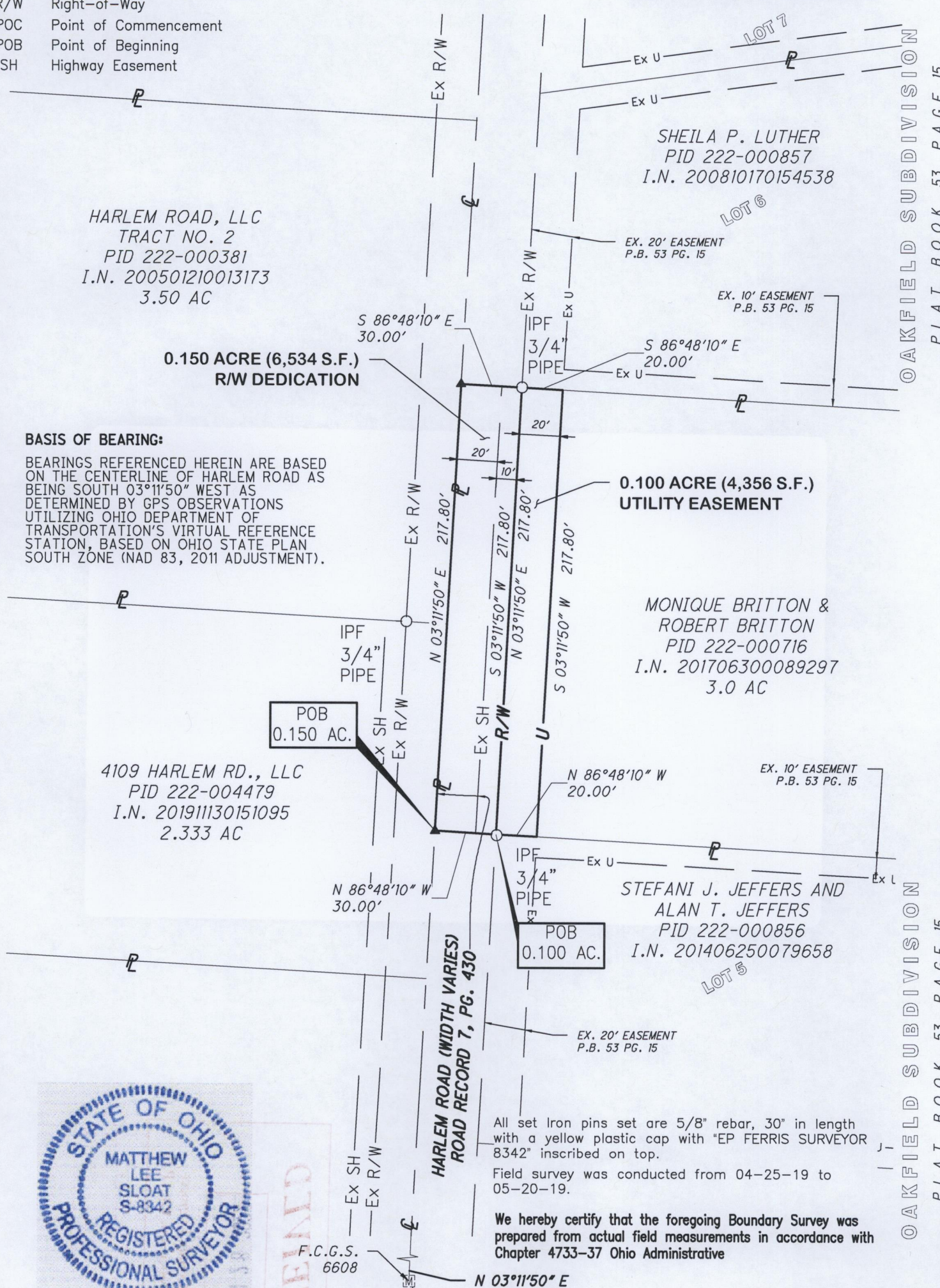
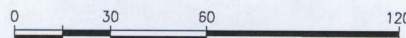


**Legend**

- (M) Measured
- ☒ Monument Found
- IPF Iron Pin Found
- MNF Mag Nail Found
- Iron Pin Set
- ▲ Mag Nail Set
- PL Property Line
- R/W Right-of-Way
- POC Point of Commencement
- POB Point of Beginning
- SH Highway Easement

**0.150 ACRE R/W DEDICATION &  
0.100 ACRE UTILITY EASEMENT  
STATE OF OHIO, COUNTY OF FRANKLIN, CITY OF  
NEW ALBANY BEING IN QUARTER TWP. 3, TWP. 2,  
RANGE 16, U.S.M. LANDS**

Scale: 1"=60'



**BASIS OF BEARING:**

BEARINGS REFERENCED HEREIN ARE BASED ON THE CENTERLINE OF HARLEM ROAD AS BEING SOUTH 03°11'50" WEST AS DETERMINED BY GPS OBSERVATIONS UTILIZING OHIO DEPARTMENT OF TRANSPORTATION'S VIRTUAL REFERENCE STATION, BASED ON OHIO STATE PLAN SOUTH ZONE (NAD 83, 2011 ADJUSTMENT).

All set Iron pins set are 5/8" rebar, 30" in length with a yellow plastic cap with "EP FERRIS SURVEYOR 8342" inscribed on top.  
Field survey was conducted from 04-25-19 to 05-20-19.

We hereby certify that the foregoing Boundary Survey was prepared from actual field measurements in accordance with Chapter 4733-37 Ohio Administrative



BY: *Matthew Lee Sloat* 1/6/22  
Matthew L. Sloat, P.E., P.S.  
Registered Surveyor No. 8342

POC	0.150 AC.
POB	0.100 AC.

PARCEL ID	ACREAGE BREAKDOWN			UTILITY EASEMENT ACREAGE
	GROSS R/W	P.R.O. R/W	NET R/W ACREAGE	
222-000716	0.150 AC.	0.100 AC.	0.050 AC.	0.100 AC.

**E. P. FERRIS AND ASSOCIATES INC.**  
Consulting Civil Engineers and Surveyors

**CONTACT:**  
880 KING AVENUE  
COLUMBUS, OHIO 43212  
(614) 299-2999  
(614) 299-2992 (Fax)  
www.EPFERRIS.com

**0.150 ACRE R/W DEDICATION &  
0.100 ACRE UTILITY EASEMENT  
CITY OF NEW ALBANY, OHIO**

JOB NO.	405151
DRAWN BY:	CK
CHECKED BY:	MLS
APPROVED BY:	MLS
DATE:	1-4-21

OAKFIELD SUBDIVISION

PLAT BOOK 53, PAGE 15

OAKFIELD SUBDIVISION

PLAT BOOK 53, PAGE 15