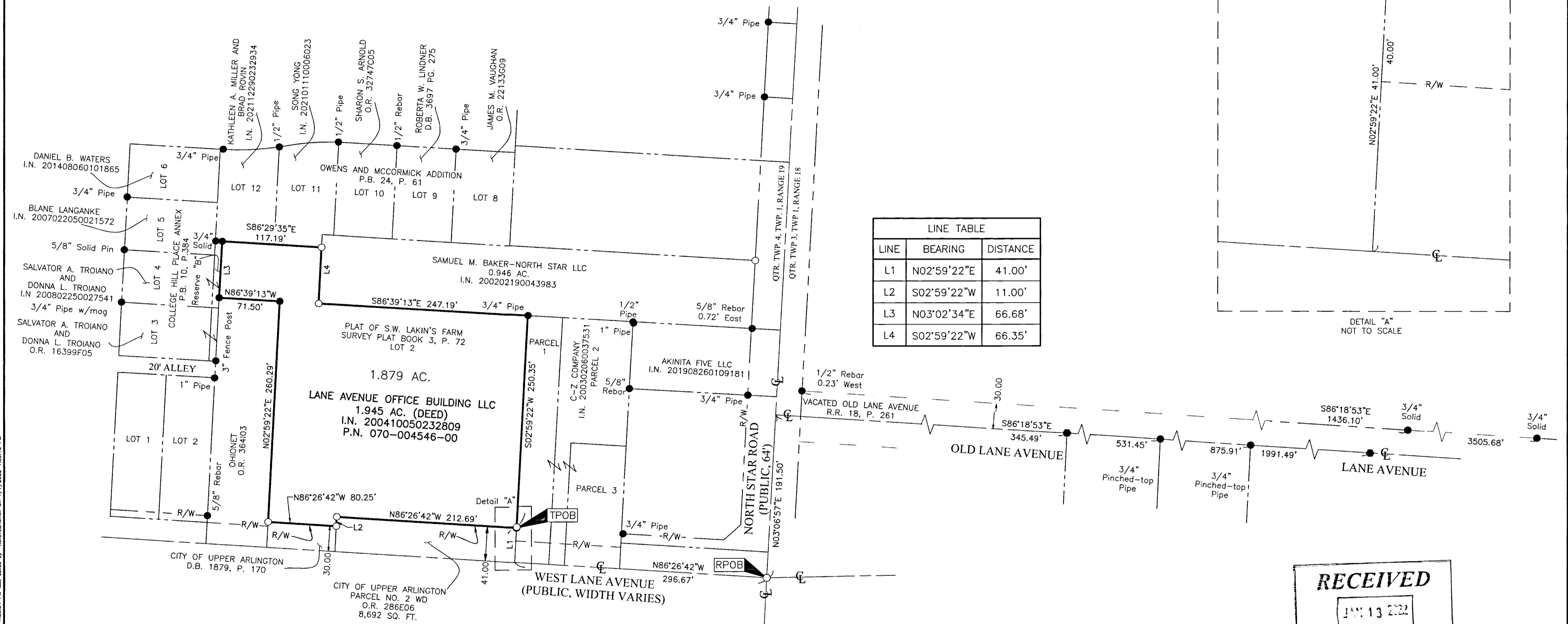


SURVEY OF ACREAGE PARCEL

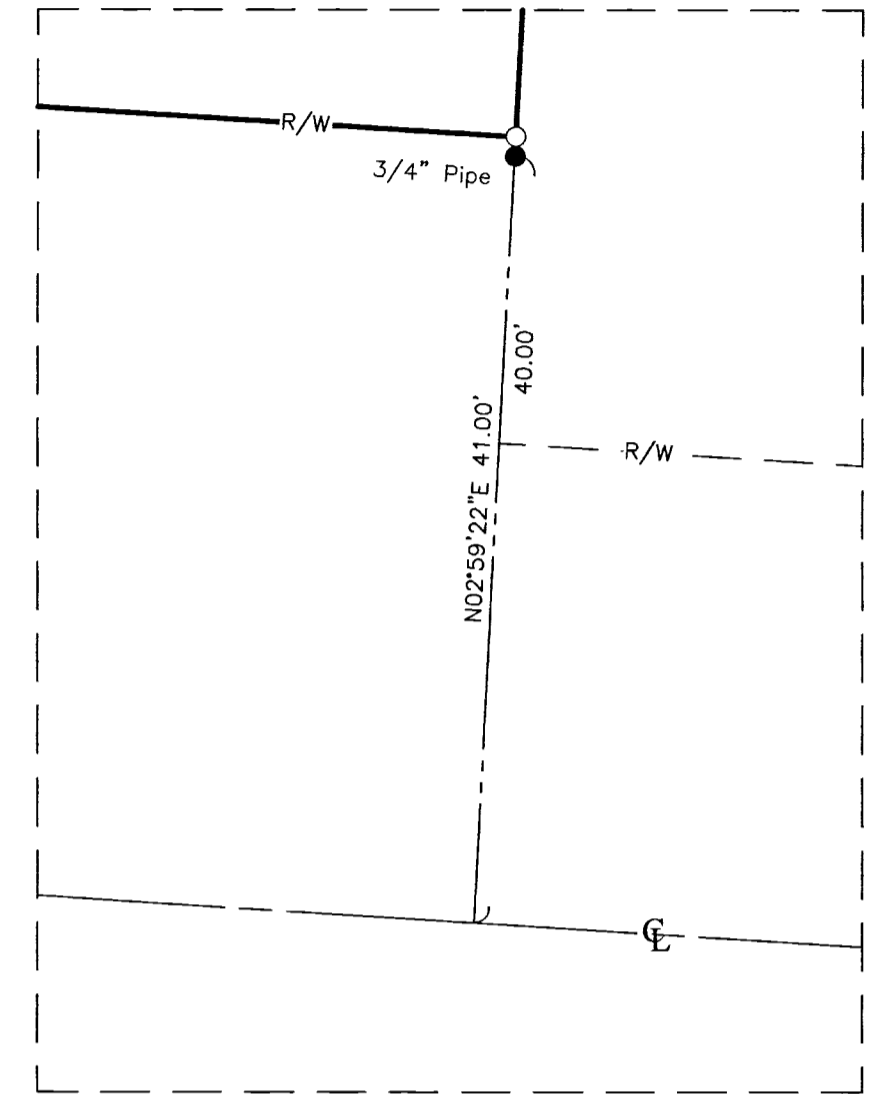
QUARTER TOWNSHIP 4, TOWNSHIP 1, RANGE 19

UNITED STATES MILITARY DISTRICT

CITY OF UPPER ARLINGTON, COUNTY OF FRANKLIN, STATE OF OHIO



LINE TABLE		
LINE	BEARING	DISTANCE
L1	N02°59'22"E	41.00'
L2	S02°59'22"W	11.00'
L3	N03°02'34"E	66.68'
L4	S02°59'22"W	66.35'



DETAIL "A"
NOT TO SCALE

RECEIVED

JAN 13 2022

Franklin County Engineer
Cunell R. Rotensen, P.E., P.S.

PRELIMINARY APPROVAL
Cunell R. Rotensen, P.E., P.S.
1/13/2022

J:\2021\399\DWG\04SHEETS\BOUNDARY\20211399-VS-BNDY-01.DWG plotted by DISTELHORST on 1/7/2022 1:59:16 PM

- = STONE FND.
- = MON. FND.
- = I.P. FND.
- = I.P. SET
- = MAG. NAIL FND.
- = MAG. NAIL SET
- ▲ = R.R. SPK. FND.
- ◆ = P.K. NAIL FND.

I.P. Set are 13/16" I.D. iron pipes 30" long with cap inscribed EMHT INC.
I.P. found are 3/4" iron pipes capped "Bird & Bull" unless otherwise noted

GRAPHIC SCALE (in feet)

BASIS OF BEARINGS:
The bearings shown hereon are based on the Ohio State Plane Coordinate System South Zone per NAD83 (NSRS2007). Control for bearings was from coordinates of monuments RINGLE and COC4-83 having a bearing of South 34° 13' 31" West, established by the Franklin County Engineering Department, using Global Positioning procedures and equipment.

SURVEY NOTE:
This survey was prepared using documents of record, prior plats of survey, and observed evidence located by an actual field survey in October 2021.

By *Joshua M. Meyer* 1-7-2022
Joshua M. Meyer
Professional Surveyor No. 8485
jmeyer@emht.com Date

EMHT Evans, Mechwart, Hambleton & Tilton, Inc. Engineers • Surveyors • Planners • Scientists 5500 New Albany Road, Columbus, OH 43054 Phone: 614.775.4500 Toll Free: 888.775.3448 emht.com	Date: January 7, 2022	
	Scale: 1" = 80'	
	Job No: 2021-1399	
	Sheet: 1 of 1	
REVISIONS		
MARK	DATE	DESCRIPTION