

RECEIVED

JAN 13 2022

Franklin County Engineer  
Cornell R. Robertson, P.E., P.S.

A-4-E

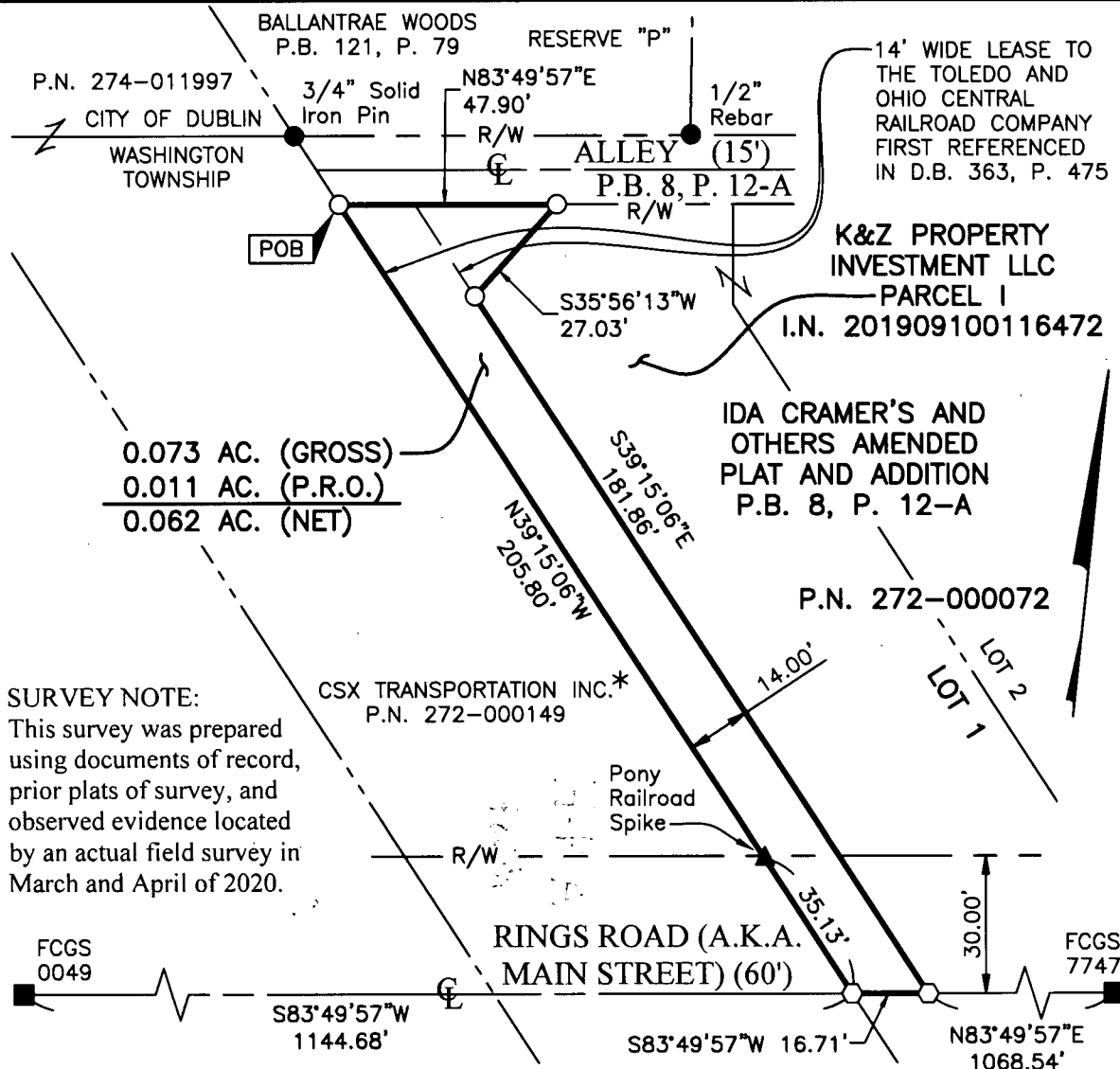


Evans, Mechwart, Hambleton & Tilton, Inc.  
Engineers • Surveyors • Planners • Scientists  
5500 New Albany Road, Columbus, OH 43054  
Phone: 614.775.4500 Toll Free: 888.775.3648  
emht.com

### SURVEY OF ACREAGE PARCEL

VIRGINIA MILITARY DISTRICT SURVEY NUMBER 6953  
TOWNSHIP OF WASHINGTON, COUNTY OF FRANKLIN, STATE OF OHIO

Date: January 6, 2022 Scale: 1" = 40' Job No: 2020-1267 Sheet No: 1 of 1



0.073 AC. (GROSS)  
0.011 AC. (P.R.O.)  
0.062 AC. (NET)

**SURVEY NOTE:**  
This survey was prepared using documents of record, prior plats of survey, and observed evidence located by an actual field survey in March and April of 2020.

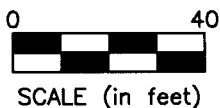
\* CONVEYED TO NEW YORK CENTRAL LINES LLC, BY DEED OF RECORD IN I.N. 200212180325201, NOW KNOWN AS CSX TRANSPORTATION INC., SUCCESSOR BY MERGER, OF RECORD IN I.N. 200507210144733, I.N. 200507210144738 AND I.N. 200711080194030. ORIGINALLY PARTITIONED AS RAILROAD RIGHT-OF-WAY TO TOLEDO & OHIO CENTRAL RAILWAY COMPANY BY DEED OF RECORD IN D.B. 245, P. 600.

#### BASIS OF BEARINGS:

The Bearings shown hereon are based on the Ohio State Plane Coordinate System (South Zone) as per NAD83 (NSRS 2007). Control for bearings was from coordinates of monuments FCGS8847 and FCGS8848, having a bearing of South  $85^{\circ} 44' 19''$  West, established by the Franklin County Engineering Department, using Global Positioning System procedures and equipment.

- = MON. FND.
- = I.P. FND.
- = I.P. SET
- ◊ = MAG. NAIL SET
- ▲ = R.R. SPK. FND.

I.P. Set are 13/16"  
I.D. iron pipes  
30" long with cap  
inscribed EMHT INC.



By *Joshua M. Meyer* 1-6-2022  
Joshua M. Meyer  
Professional Surveyor No. 8485  
jmeyer@emht.com

#### PRELIMINARY APPROVAL

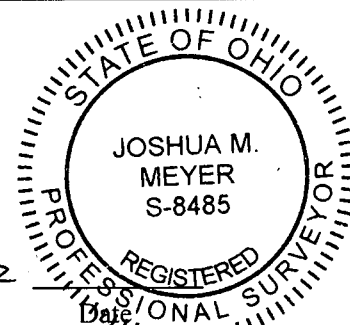
Cornell R. Robertson, P.E., P.S.

BY: gantonini  
01/07/2022

PENDING ORIGINALS

\*Submitted via digital format

Please return this approval, along with the original description and plat of survey, as prepared by the surveyor, signed, sealed and dated in blue ink.



J:\20201267\DWG\04SHEETS\BOUNDARY\20201267-VS-BNDY-RWAY-01.DWG plotted by FERGLUSON, DAVID on 1/6/2022 2:31:47 PM last saved by FERGLUSON, DAVID on 1/6/2022 2:31:45 PM