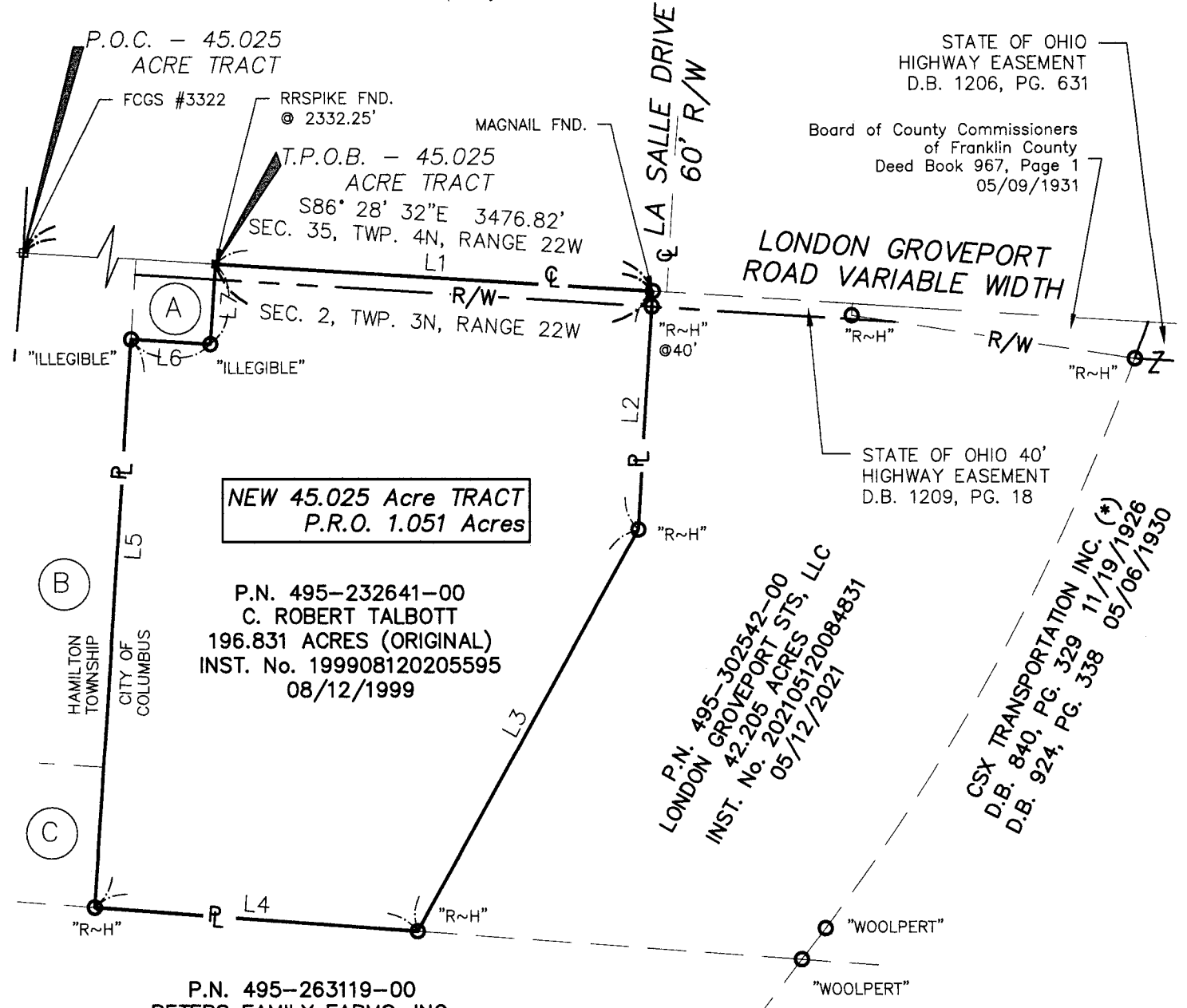




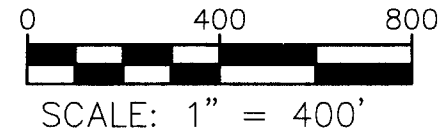
Phone: (330) 723-1828 257 SOUTH COURT STREET, SUITE 6 MEDINA, OHIO 44256 Email: info@RH-INC.com

SITUATED IN THE STATE OF OHIO, COUNTY OF FRANKLIN, CITY OF COLUMBUS, AND BEING A PART OF ORIGINAL HAMILTON TOWNSHIP SECTION 2, TOWNSHIP 3 NORTH, RANGE 22 WEST, CONGRESS LANDS, ALSO BEING A 45.025 ACRE TRACT OUT OF THAT 196.831 ACRE (ORIGINAL) TRACT OF LAND AS DESCRIBED IN A DEED TO C. ROBERT TALBOTT OF RECORD IN INSTRUMENT NO. 199908120205595. ALL REFERENCES TO RECORDS ARE ON FILE IN THE RECORDER'S OFFICE, FRANKLIN COUNTY, OHIO.

(*) CHESAPEAKE AND OHIO RAILWAY COMPANY, successor by merger, whose merger documents have been summarized and recorded as Official Record 13276 A15 and subsequently re-recorded as Official Record 13283 G13



BASIS OF BEARINGS:
 BEARINGS ARE BASED ON THE CENTERLINE OF LONDON GROVEPORT ROAD BETWEEN FCGS #3322 AND A RAILROAD SPIKE FOUND BEARING SOUTH 86°28'32" EAST AT 2332.25 FEET OBSERVED, AS REFERENCED TO THE OHIO STATE PLANE COORDINATE SYSTEM, SOUTH ZONE, NAD83 AS ESTABLISHED BY GPS OBSERVATIONS USING THE ODOT VRS SYSTEM.



- NOTE:**
 ALL RECORD INFORMATION SHOWN HEREON WAS OBTAIN FROM THE RECORDER'S OFFICE, FRANKLIN COUNTY, OHIO.
- DENOTES 5/8"x30" LONG REBAR SET W/ YELLOW I.D. CAP MARKED ROLLING~HOCEVAR.
 - DENOTES 5/8" REBAR FOUND W/ YELLOW I.D. CAP AS NOTED.



THIS PLAT WAS PREPARED BY ROLLING & HOCEVAR, INC., AND IS A TRUE AND ACCURATE REPRESENTATION, TO THE BEST OF MY KNOWLEDGE AND BELIEF, OF A SURVEY MADE BY SAME IN APRIL 2021.

Andrew G. Planet 7-30-2021
 ANDREW G. PLANET, P.S. No. 7802 DATE
 RH Proj. No. 31,918

Line #	Length	Direction
L1	1144.57'	S86° 28' 32"E
L2	615.55'	S3° 31' 28"W
L3	1186.78'	S29° 08' 58"W
L4	843.09'	N85° 51' 02"W
L5	1468.41'	N3° 39' 07"E
L6	208.00'	S86° 28' 32"E
L7	208.00'	N3° 39' 07"E