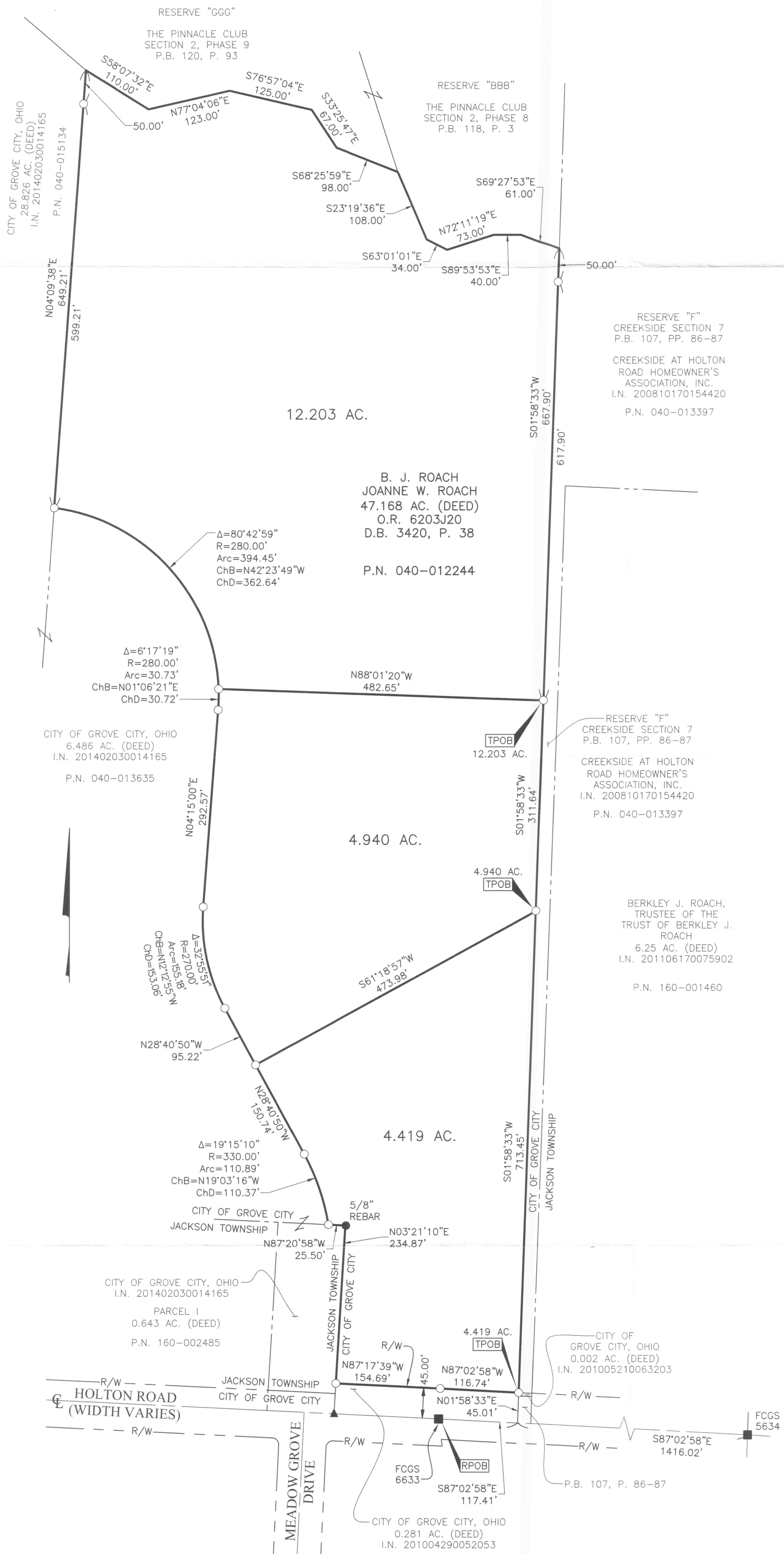


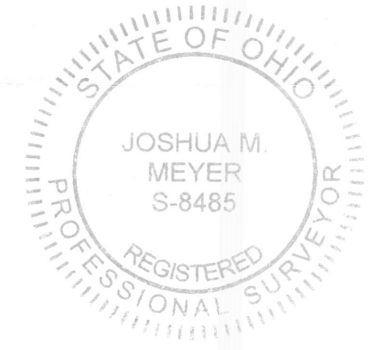
SURVEY OF ACREAGE PARCEL

VIRGINIA MILITARY DISTRICT SURVEY NUMBER 6840 CITY OF GROVE CITY, COUNTY OF FRANKLIN, STATE OF OHIO



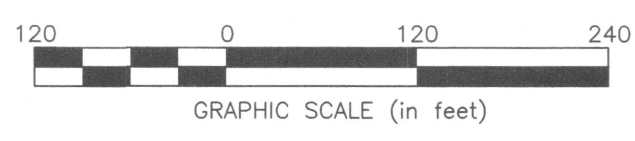
BASIS OF BEARINGS:
The bearings are based on the Ohio State Plane Coordinate System, South Zone, per NAD83 (1986 adjustment). Control for bearings was from coordinates of monuments FCGS 5548 and FCGS 5539, having a bearing of North 00° 21' 40" East for a portion of the centerline of Hoover Road, established by the Franklin County Engineering Department.

SURVEY NOTE:
This survey was prepared using documents of record, prior plats of survey, and observed evidence located by an actual field survey.



By *Joshua M. Meyer* 11-2-2021
 Joshua M. Meyer
 Professional Surveyor No. 8485
 jmeyer@emht.com Date

EMHT Evans, Mechwart, Hambleton & Tilton, Inc. Engineers • Surveyors • Planners • Scientists 5500 New Albany Road, Columbus, OH 43054 Phone: 614.775.4500 Toll Free: 888.775.3648 emht.com		Date: November 2, 2021
Scale: 1" = 120'		Job No: 2020-0725
Sheet: 1 of 1		
REVISIONS		
MARK	DATE	DESCRIPTION



- = MON. FND.
 - = I.P. FND.
 - = I.P. SET
 - ▲ = R.R. SPK. FND.
- I.P. Set are 13/16" I.D. iron pipes
30" long with cap inscribed EMHT INC.