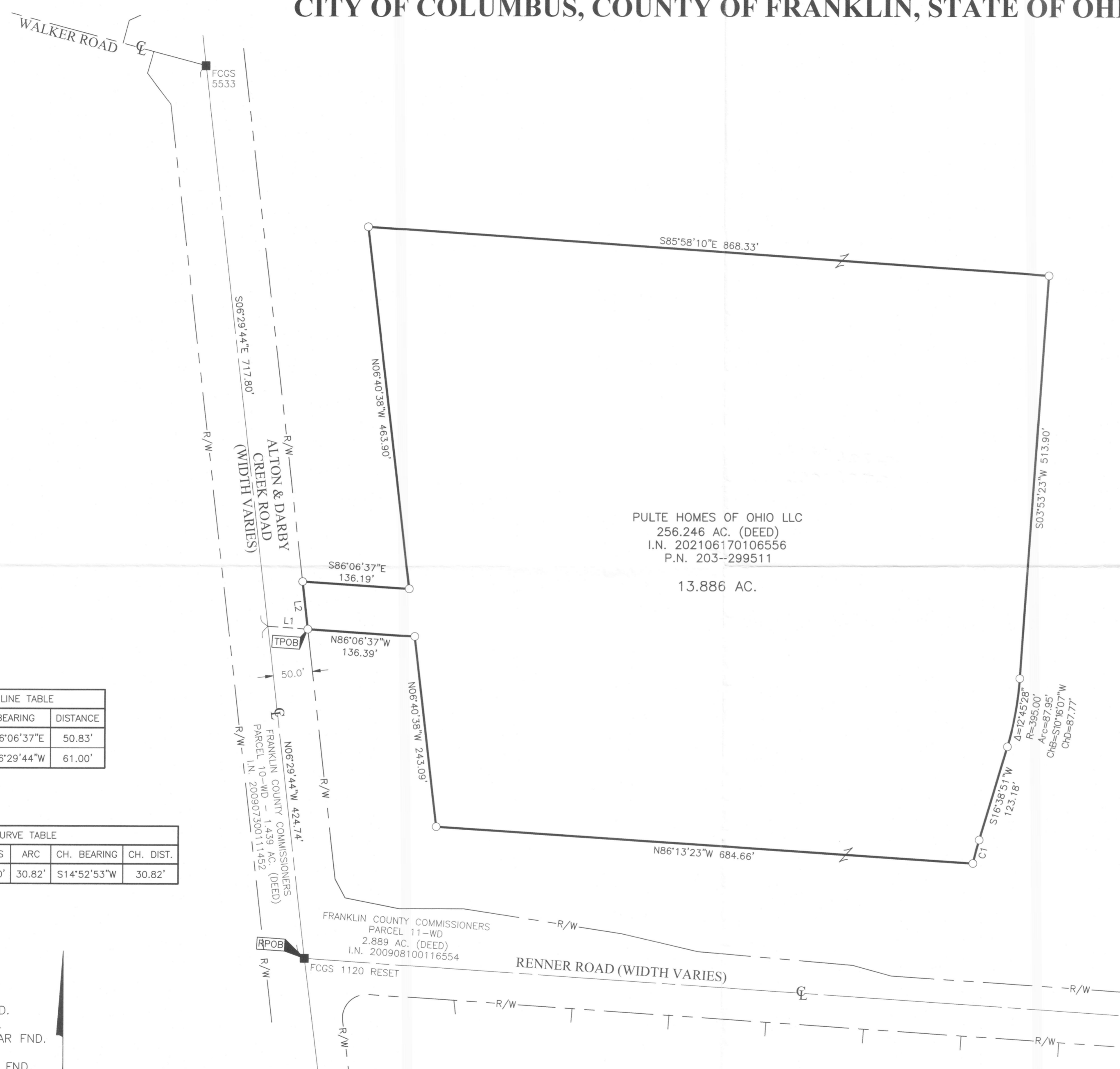


SURVEY OF ACREAGE PARCEL

VIRGINIA MILITARY SURVEY DISTRICT NUMBER 6635

CITY OF COLUMBUS, COUNTY OF FRANKLIN, STATE OF OHIO



PULTE HOMES OF OHIO LLC
256.246 AC. (DEED)
I.N. 202106170106556
P.N. 203--299511

13.886 AC.

BASIS OF BEARINGS:
The bearings shown on this survey are based on the Ohio State Plane Coordinate System, South Zone, NAD 83 (NSRS2007). Said bearings originated from a field traverse which was tied (referenced) to said coordinate system by GPS observations of Franklin County Engineering Department monuments FRANK154 and FCGS 5268. The portion of the centerline of Alton & Darby Creek Road, having a bearing of North 06° 29' 44" West and monumented as shown hereon, is designated as the "basis of bearings" for this survey.

RECEIVED
DEC 17 2021
Franklin County Engineer
Cornell R. Robertson, P.E., P.S.

SURVEY NOTE:
This survey was prepared using documents of record, prior plats of survey, and observed evidence located by an actual field survey.

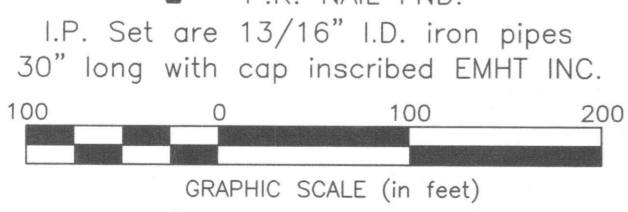


By Matthew A. Kirk Date 3 Nov 21
Matthew A. Kirk
Professional Surveyor No. 7865
mkirk@emht.com

LINE TABLE		
LINE	BEARING	DISTANCE
L1	S86°06'37"E	50.83'
L2	N06°29'44"W	61.00'

CURVE TABLE					
CURVE	DELTA	RADIUS	ARC	CH. BEARING	CH. DIST.
C1	3'31'55"	500.00'	30.82'	S14°52'53"W	30.82'

- = STONE FND.
- = MON. FND.
- = 5/8" REBAR FND.
- = I.P. SET
- = MAG. NAIL FND.
- = MAG. NAIL SET
- ▲ = R.R. SPK. FND.
- = P.K. NAIL FND.



<p>Evans, Mechwart, Hambleton & Tilton, Inc. Engineers • Surveyors • Planners • Scientists 5500 New Albany Road, Columbus, OH 43054 Phone: 614.775.4500 Toll Free: 888.775.3648 emht.com</p>	Date: November 3, 2021
	Scale: 1" = 100'
	Job No: 2021-0021
	Sheet: 1 of 1
REVISIONS	
MARK	DATE DESCRIPTION