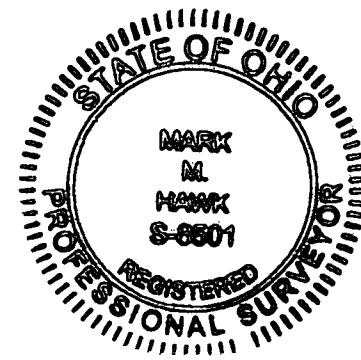
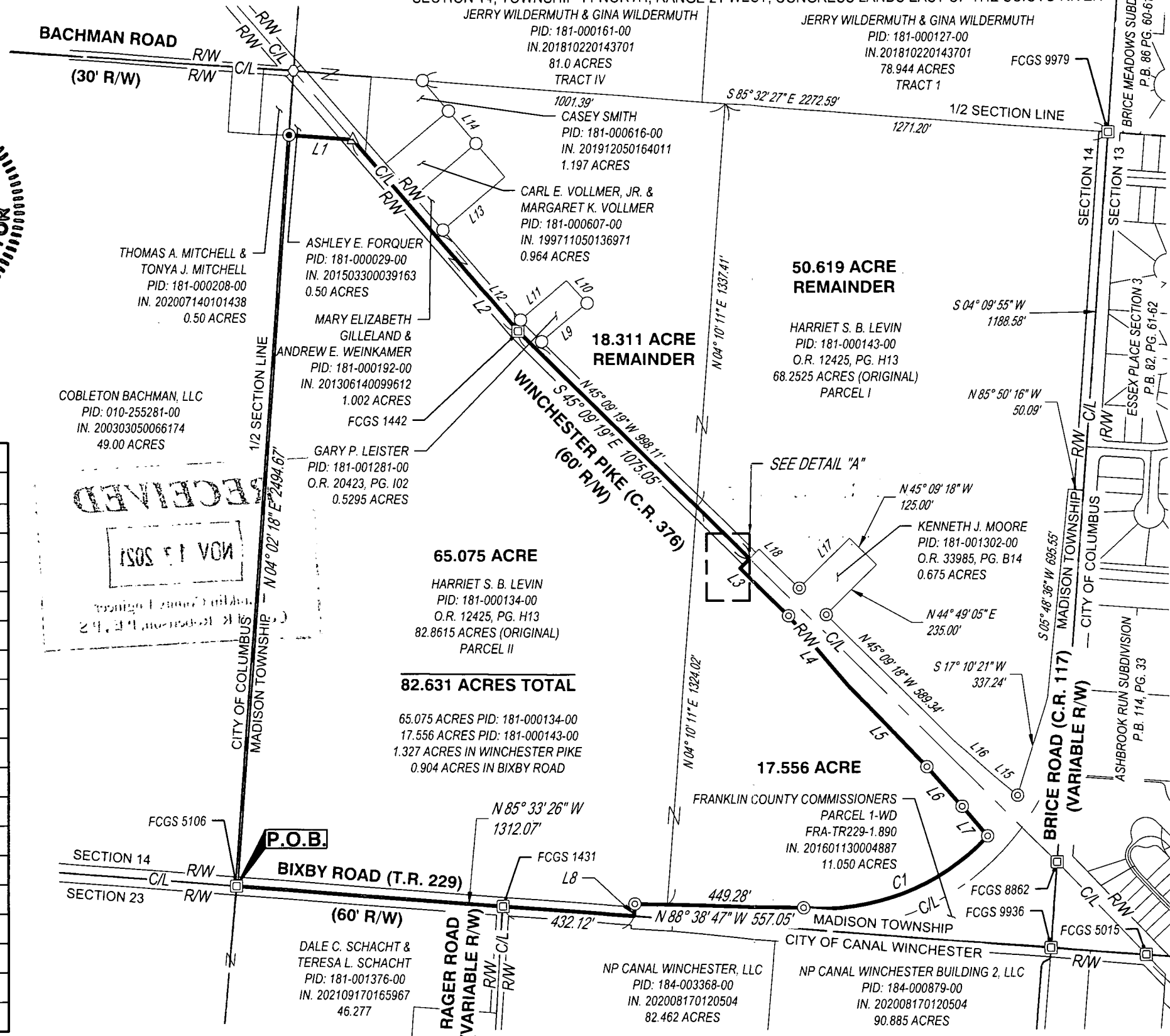


LOT SPLIT

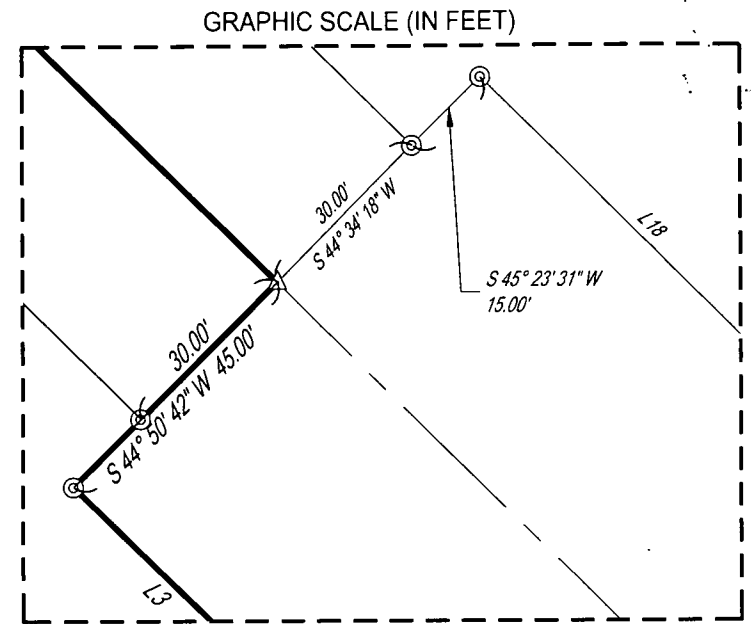
STATE OF OHIO, COUNTY OF FRANKLIN, TOWNSHIP OF MADISON,
SECTION 14, TOWNSHIP 11 NORTH, RANGE 21 WEST, CONGRESS LANDS EAST OF THE SCIOTO RIVER



Line #	Direction	Length
L1	S85° 57' 42"E	210.27'
L2	S40° 35' 31"E	835.68'
L3	S45° 09' 18"E	225.00'
L4	S40° 23' 29"E	301.04'
L5	S43° 37' 39"E	375.13'
L6	S41° 53' 04"E	175.29'
L7	S40° 42' 23"E	128.92'
L8	S04° 26' 27"W	39.99'
L9	N49° 26' 46"E	226.51'
L10	N41° 23' 14"W	100.00'
L11	S49° 26' 29"W	231.24'
L12	S40° 35' 31"E	392.84'
L13	N49° 23' 42"E	298.95'
L14	N40° 26' 26"W	418.21'
L15	N50° 37' 07"W	105.02'
L16	N48° 25' 32"W	175.29'
L17	S44° 49' 40"W	235.00'
L18	N45° 09' 18"W	185.61'

CURVE	DELTA ANGLE	RADIUS	ARC LENGTH	CHORD
C1	51° 28' 38"	749.00'	672.94'	S68° 42' 09"W, 650.53'

RECEIVED
NOV 10 2021
Franklin County Planning Department
Franklin County, OH



DETAIL "A"
SCALE: 1"=30'

- IRON PIN LEGEND**
- ⊙ 5/8" IRON REBAR W/ FRANKLIN COUNTY ENGINEERING CAP
 - IRON PIN SET (5/8"x30" REBAR W/ CESO CAP)
 - 3/4" IRON PIPE FOUND NO CAP
 - △ MAG NAIL SET
 - ⊠ FRANKLIN COUNTY ENGINEER MONUMENT FOUND AND USED
 - ⊙ RAILROAD SPIKE FOUND

BASIS OF BEARING:
BEARINGS SHOWN HEREON ARE BASED ON THE OHIO STATE PLANE COORDINATE SYSTEM, SOUTH ZONE, NAD 83 (2011), WITH TIES TO FRANKLIN COUNTY ENGINEER MONUMENTS FCGS 1442 AND FCGS 8862 HAVING A RELATIVE BEARING OF NORTH 45°09'19" WEST.

BASED ON FIELD OBSERVATIONS PERFORMED IN OCTOBER, 2021

LOT SPLIT		LEVIN PARCEL	
TOWNSHIP OF MADISON		FRANKLIN COUNTY, OHIO	
SCALE: 1"=400'	DATE: 10/27/2021	JOB NO.: 759721	SHEET NO.: 1 OF 1
DESIGN:	 WWW.CESOINC.COM		
DRAWN: ADB			
CHECKED: MMH			

2021-10-29 DATE
MARK M. HAWK, OHIO P.S. NO. 8501
mark.hawk@cesoinc.com