

I-5-B



Evans, Mechwart, Hambleton & Tilton, Inc.
 Engineers - Surveyors - Planners - Scientists
 5500 New Albany Road, Columbus, OH 43054
 Phone: 614.775.4500 Toll Free: 888.775.3648
 emht.com

SURVEY OF ACREAGE PARCEL

QUARTER TOWNSHIP 1, TOWNSHIP 2 NORTH, RANGE 17 WEST

UNITED STATES MILITARY DISTRICT

TOWNSHIP OF BLENDON, COUNTY OF FRANKLIN, STATE OF OHIO

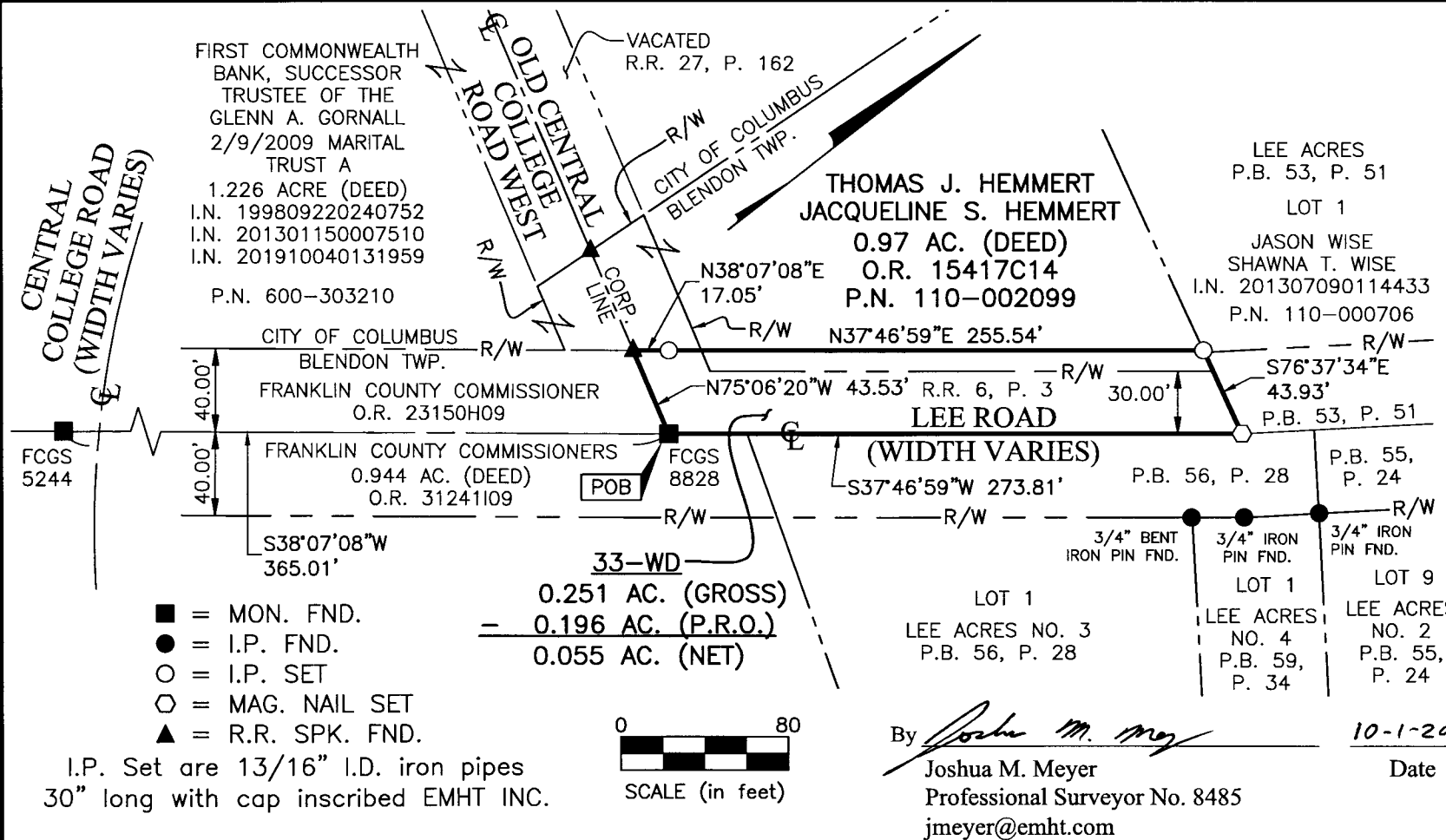
Date: October 1, 2021

Scale: 1" = 80'

Job No: 2019-1329

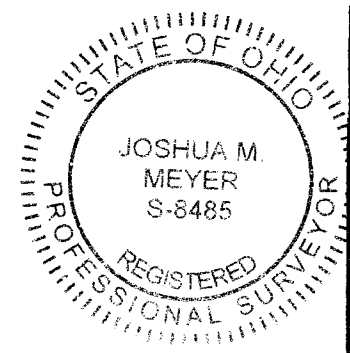
Sheet No: 1 of 1

Plan No. 3695-E



BASIS OF BEARINGS:
 The Bearings shown hereon are based on the Ohio State Plane Coordinate System (South Zone) as per NAD83 (NSRS 2007). Control for bearings was from coordinates of monuments D5RESET and 8825RESET, having a bearing of South 45° 01' 28" West, established by the Franklin County Engineering Department, using Global Positioning System procedures and equipment.

SURVEY NOTE:
 This survey was prepared using documents of record, prior plats of survey, and observed evidence located by an actual field survey.



RECEIVED

OCT 25 2021

Franklin County Engineer
 Cornell K. Robertson, P.L., P.S.