

I-5-A, I-5-B



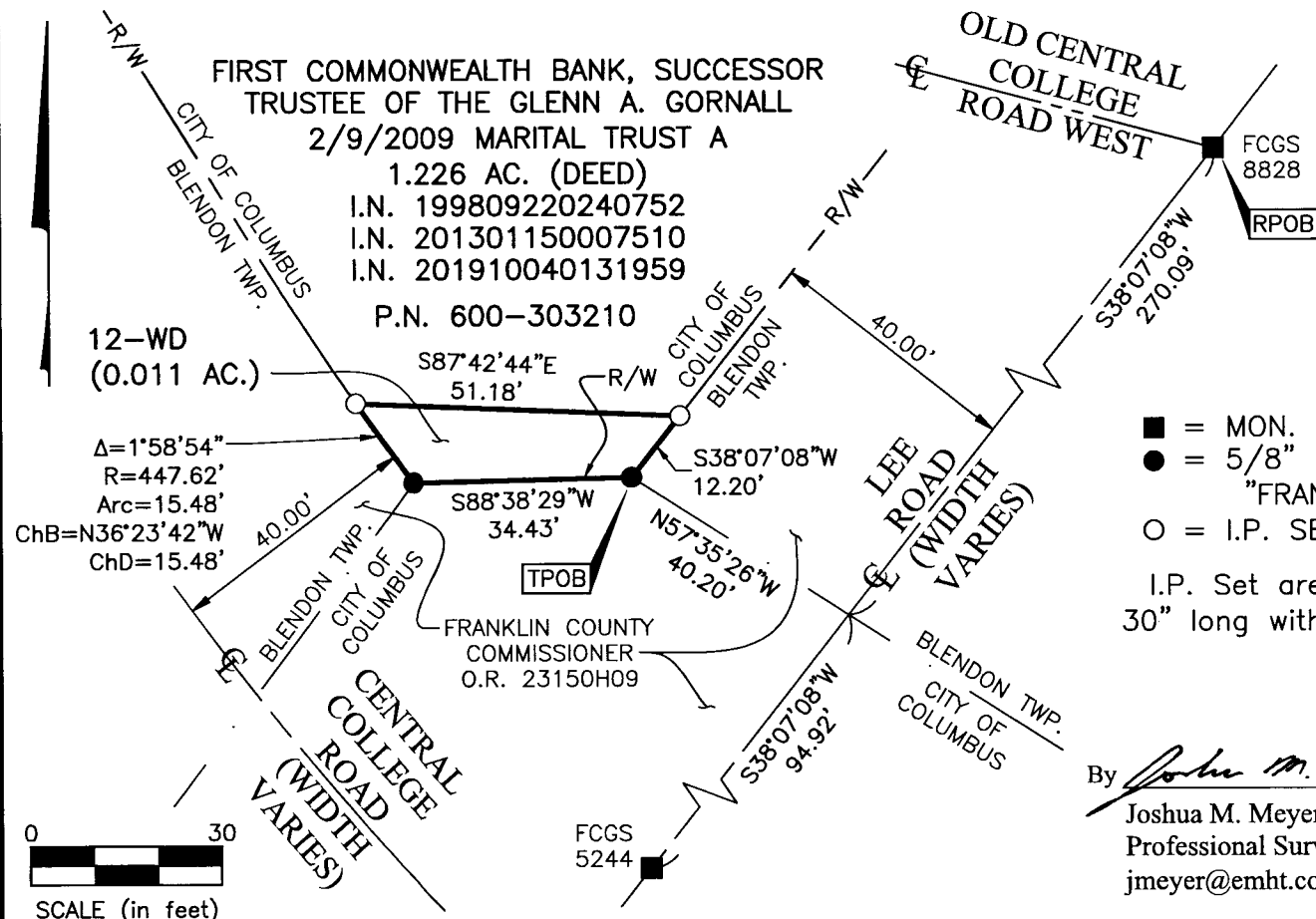
Evans, Mechwart, Hambleton & Tilton, Inc.
 Engineers • Surveyors • Planners • Scientists
 5500 New Albany Road, Columbus, OH 43054
 Phone: 614.775.4500 Toll Free: 888.775.3648
 emht.com

SURVEY OF ACREAGE PARCEL

QUARTER TOWNSHIP 1, TOWNSHIP 2 NORTH, RANGE 17 WEST
 UNITED STATES MILITARY DISTRICT
 CITY OF COLUMBUS, COUNTY OF FRANKLIN, STATE OF OHIO

Date:	October 1, 2021
Scale:	1" = 30'
Job No:	2019-1329
Sheet No:	1 of 1

Plan No. 3695-E



BASIS OF BEARINGS:

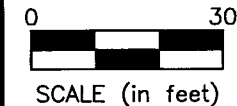
The Bearings shown hereon are based on the Ohio State Plane Coordinate System (South Zone) as per NAD83 (NSRS 2007). Control for bearings was from coordinates of monuments D5RESET and 8825RESET, having a bearing of South 45° 01' 28" West, established by the Franklin County Engineering Department, using Global Positioning System procedures and equipment.

SURVEY NOTE:

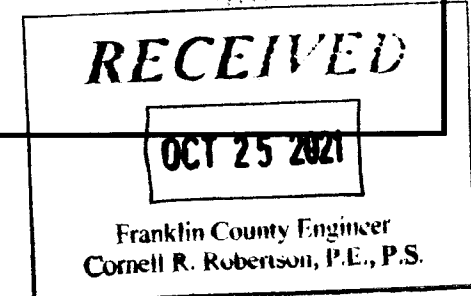
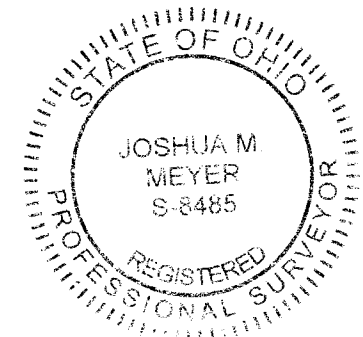
This survey was prepared using documents of record, prior plats of survey, and observed evidence located by an actual field survey.

- = MON. FND.
- = 5/8" REBAR FND. CAPPED
"FRANKLIN COUNTY ENGINEER"
- = I.P. SET

I.P. Set are 13/16" I.D. iron pipes 30" long with cap inscribed EMHT INC.



By Joshua M. Meyer 10-1-2021
 Joshua M. Meyer Date
 Professional Surveyor No. 8485
 jmeyer@emht.com



J:\20191329\DWG\04SHEETS\BOUNDARY\12WD-20191329-VS-BNDY.DWG plotted by FERGUSON, DAVID on 10/1/2021 11:29:14 AM last saved by DFERGUSON on 10/1/2021 11:29:11 AM
 Xrefs: